

Nur für Forschungszwecke

# KBTBD10 Polyklonaler Antikörper

Katalog-Nr.:25577-1-AP



## Allgemeine Informationen

<b>Katalog-Nr.:</b> 25577-1-AP	<b>GenBank-Zugangsnummer:</b> BC006534	<b>Reinigungsmethode:</b> Antigen-Affinitätsreinigung
<b>Größe:</b> 150ul , Konzentration: 1000 µg/ml von10324 Nanodrop und 353 µg/ml durch die Bradford-Methode mit BSA als Standard;	<b>GeneID (NCBI):</b> kelch repeat and BTB (POZ) domain containing 10	<b>Empfohlene Verdünnungen:</b> WB 1:500-1:3000 IHC 1:20-1:200
<b>Wirt:</b> Kaninchen	<b>Vollständiger Name:</b> kelch repeat and BTB (POZ) domain containing 10	
<b>Isotyp:</b> IgG	<b>Berechnete Masse:</b> 606 aa, 68 kDa	
<b>Immunogen Katalognummer:</b> AG22311	<b>Beobachtete Masse:</b> 68 kDa	

## Anwendungen

<b>Geprüfte Anwendungen:</b> IHC, WB,ELISA	<b>Positivkontrollen:</b> WB : Mausherzgewebe, IHC : humanes Herzgewebe, humanes Skelettmuskelgewebe
<b>Getestete Reaktivität:</b> Human, Maus	
<b>Hinweis-IHC: Antigenmaskierung mit TE-Puffer pH 9,0 empfohlen. (*) Wahlweise kann die Antigenmaskierung auch mit Citratpuffer pH 6,0 erfolgen.</b>	

## Hintergrundinformationen

KBTBD10, also named as KBTBD10 or KRP1, is a 606 amino acid protein, which contains one BACK (BTB/Kelch associated) domain, one BTB (POZ) domain and five Kelch repeats. KBTBD10 localizes in the cytoplasm and is expressed in Sarcomeric muscle. KBTBD10 is involved in skeletal muscle development and differentiation. KBTBD10 regulates proliferation and differentiation of myoblasts and plays a role in myofibril assembly by promoting lateral fusion of adjacent thin fibrils into mature, wide myofibrils.

## Lagerung

**Lagerungsbedingungen:**  
Bei -20°C lagern. Nach dem Versand ein Jahr lang stabil  
**Lagerungspuffer:**  
PBS mit 0.02% Natriumazid und 50% Glycerin pH 7.3.  
Aliquotieren ist nicht notwendig bei -20°C Lagerung

\*\*\* 20ul-Größen enthalten 0.1% BSA

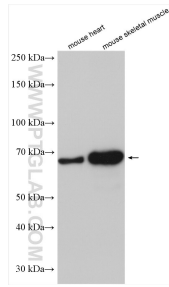
For technical support and original validation data for this product please contact:

T: 1 (888) 4PTGLAB (1-888-478-4522) (toll free  
in USA), or 1(312) 455-8498 (outside USA)

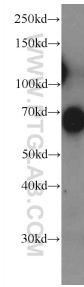
E: proteintech@ptglab.com  
W: ptglab.com

This product is exclusively available under Proteintech Group brand and is not available to purchase from any other manufacturer.

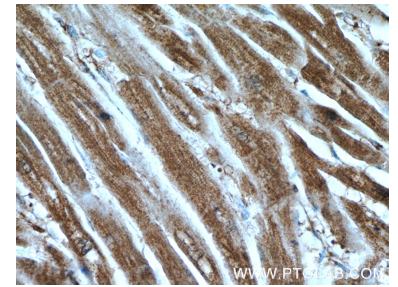
## Ausgewählte Validierungsdaten



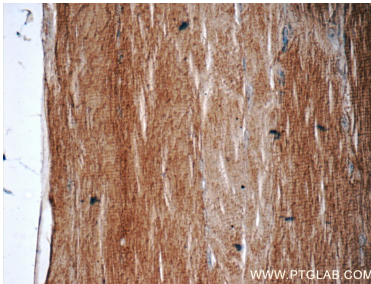
Various lysates were subjected to SDS PAGE followed by western blot with 25577-1-AP (KBTBD10 antibody) at dilution of 1:3000 incubated at room temperature for 1.5 hours.



mouse heart tissue were subjected to SDS PAGE followed by western blot with 25577-1-AP (KBTBD10 Antibody) at dilution of 1:1500 incubated at 4 degree celsius over night.



Immunohistochemical analysis of paraffin-embedded human heart tissue slide using 25577-1-AP (KBTBD10 Antibody) at dilution of 1:100 (under 40x lens).



Immunohistochemical analysis of paraffin-embedded human skeletal muscle tissue slide using 25577-1-AP (KBTBD10 Antibody) at dilution of 1:50 (under 40x lens).