

Nur für Forschungszwecke

LRRC52 Polyklonaler Antikörper

Katalog-Nr.:25584-1-AP



Allgemeine Informationen

Katalog-Nr.: 25584-1-AP	GenBank-Zugangsnummer: BC132981	Reinigungsmethode: Antigen-Affinitätsreinigung
Größe: 150ul , Konzentration: 730 µg/ml von Nanodrop;	GeneID (NCBI): 440699	Empfohlene Verdünnungen: WB 1:500-1:1000
Wirt: Kaninchen	Vollständiger Name: leucine rich repeat containing 52	
Isotyp: IgG	Berechnete Masse: 313 aa, 35 kDa	
Immunogen Katalognummer: AG22354	Beobachtete Masse: 45 kDa	

Anwendungen

Geprüfte Anwendungen: WB,ELISA	Positivkontrollen: WB : Maus-Skelettmuskelgewebe, Ratten- Skelettmuskelgewebe
Getestete Reaktivität: Human, Maus, Ratte	

Hintergrundinformationen

LRRC52 (leucine-rich repeat-containing protein 52) belongs to the gamma family of the BK channel accessory subunits, which potentially regulate the channel's gating properties (PMID: 22547800). It is dominantly expressed in testis and skeletal muscle, with much lower expression in several other tissues including placenta, kidney, lung, and some glands. LRRC52 has been reported as a Slo3 auxiliary subunit that helps define the specific alkalization dependence of K_{Sper} activation. LRRC52 has a calcular molecular weight of 35 kDa. This polyclonal antibody raised against 24-244aa of human LRRC52 reveals a band of 45 kDa, which is consistent with the molecular weight of glycosylated form of LRRC52 (PMID: 22084117).

Lagerung

Lagerungsbedingungen:
Bei -20°C lagern. Nach dem Versand ein Jahr lang stabil
Lagerungspuffer:
PBS mit 0.02% Natriumazid und 50% Glycerin pH 7.3.
Aliquotieren ist nicht notwendig bei -20°C Lagerung

*** 20ul-Größen enthalten 0.1% BSA

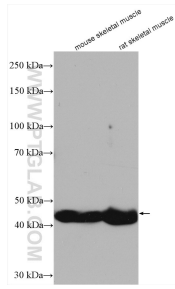
For technical support and original validation data for this product please contact:

T: 1 (888) 4PTGLAB (1-888-478-4522) (toll free
in USA), or 1(312) 455-8498 (outside USA)

E: proteintech@ptglab.com
W: ptglab.com

This product is exclusively available under Proteintech Group brand and is not available to purchase from any other manufacturer.

Ausgewählte Validierungsdaten



Various lysates were subjected to SDS PAGE followed by western blot with 25584-1-AP (LRRC52 antibody) at dilution of 1:800 incubated at room temperature for 1.5 hours.