

Nur für Forschungszwecke

PRDM15 Polyklonaler Antikörper

Katalog-Nr.: 25590-1-AP

Vorgestelltes Produkt



Allgemeine Informationen

Katalog-Nr.:
25590-1-AP

Größe:
150ul, Konzentration: 1000 µg/ml von 63977
Nanodrop und 413 µg/ml durch die
Bradford-Methode mit BSA als
Standard;

Wirt:
Kaninchen

Isotyp:
IgG

Immunogen Katalognummer:
AG22296

GenBank-Zugangsnummer:
BC067102

GeneID (NCBI):

Vollständiger Name:
PR domain containing 15

Berechnete Masse:
1507 aa, 169 kDa

Beobachtete Masse:
169 kDa

Reinigungsmethode:

Antigen-Affinitätsreinigung

Empfohlene Verdünnungen:

WB 1:200-1:1000
IP 0.5-4.0 µg für IP und 1:500-1:1000
für WB

Anwendungen

Geprüfte Anwendungen:

IP, WB, ELISA

Getestete Reaktivität:

Human

Positivkontrollen:

WB: MCF-7-Zellen, Jurkat-Zellen

IP: MCF-7-Zellen,

Hintergrundinformationen

The PR-domain containing proteins (PRDMs) have a common involvement in the modulation of gene activities. A PR-domain family member usually produces two products, called PR-plus and PR-minus, which differ by the presence or absence of the PR domain, respectively. The PR-plus product is underexpressed or disrupted in cancer cells, whereas the PR-minus product is present or overexpressed in cancer cells. This imbalance in the amount of the two products, which is a result of either genetic or epigenetic events, appears to be a determining factor of malignancy. PRDM15 (PR domain-containing protein 15), also known as PFM15 or ZNF298, is a 1507 amino acid protein belonging to the PRDM family. Localizing to the nucleus, PRDM15 contains sixteen C2H2-type zinc fingers and one SET domain. It is believed to participate in transcriptional regulation and may be involved in cell differentiation and tumorigenesis. PRDM15 exists several isoform and molecular weight of respective isoform is 169 kDa, 135kDa, 62kDa.

Lagerung

Lagerungsbedingungen:

Bei -20°C lagern. Nach dem Versand ein Jahr lang stabil

Lagerungspuffer:

PBS mit 0.02% Natriumazid und 50% Glycerin pH 7.3.

Aliquotieren ist nicht notwendig bei -20°C Lagerung

***** 20ul-Größen enthalten 0.1% BSA**

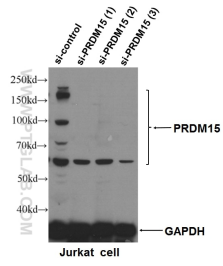
For technical support and original validation data for this product please contact:

T: 1 (888) 4PTGLAB (1-888-478-4522) (toll free
in USA), or 1(312) 455-8498 (outside USA)

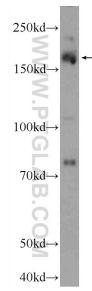
E: proteintech@ptglab.com
W: ptglab.com

This product is exclusively available under Proteintech Group brand and is not available to purchase from any other manufacturer.

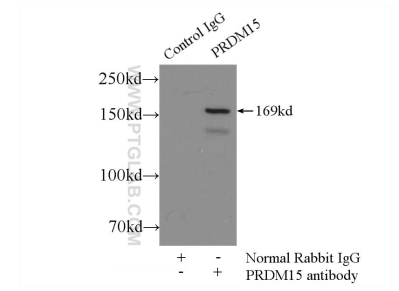
Ausgewählte Validierungsdaten



WB result of PRDM15 (25590-1-AP, 1:500) with si-control and si-PRDM15 transfected Jurkat cells.



MCF-7 cells were subjected to SDS PAGE followed by western blot with 25590-1-AP (PRDM15 Antibody) at dilution of 1:300 incubated at room temperature for 1.5 hours.



IP Result of anti-PRDM15 (IP: 25590-1-AP, 5 µg; Detection: 25590-1-AP 1:500) with MCF-7 cell lysate 2500 µg.