

Allgemeine Informationen

Katalog-Nr.: 25659-1-AP	GenBank-Zugangsnummer: BC000481	Reinigungsmethode: Antigen-Affinitätsreinigung
Größe: 150ul , Konzentration: 550 µg/ml von Nanodrop und 333 µg/ml durch die Bradford-Methode mit BSA als Standard;	GeneID (NCBI): 5315	Empfohlene Verdünnungen: WB 1:500-1:3000 IHC 1:100-1:400 IF 1:20-1:200
Wirt: Kaninchen	Vollständiger Name: PKM pyruvate kinase, muscle	
Isotyp: IgG	Berechnete Masse: 58 kDa	
Immunogen Katalognummer: AG20270	Beobachtete Masse: 58 kDa	

Anwendungen

Geprüfte Anwendungen:

IF, IHC, WB, ELISA

In Publikationen genannte Anwendungen:

IP, WB

Getestete Reaktivität:

Human

Zitierte Arten:

Human

Hinweis-IHC: Antigenmaskierung mit TE-Puffer pH 9,0 empfohlen. (*) Wahlweise kann die Antigenmaskierung auch mit Citratpuffer pH 6,0 erfolgen.

Positivkontrollen:

WB : HEK-293-Zellen, COLO 320-Zellen, HeLa-Zellen, KEK293-Zellen, Mausherzgewebe, Maushirngewebe, Maus-Skelettmuskelgewebe, MCF-7-Zellen, NIH/3T3-Zellen, Rattenherzgewebe, Rattenhirngewebe, Ratten-Skelettmuskelgewebe, SMMC-7721-Zellen

IHC : humanes Leberkarzinomgewebe,

IF : HeLa-Zellen,

Hintergrundinformationen

PKM, also named as OIP3, PK2, PK3, PK-M1/2, p58, THBP1, CTHBP and Tumor M2-PK, belongs to the pyruvate kinase family. It is glycolytic enzyme that catalyzes the transfer of a phosphoryl group from phosphoenolpyruvate (PEP) to ADP, generating ATP. It stimulates POU5F1-mediated transcriptional activation. PKM plays a general role in caspase independent cell death of tumor cells. PKM has 2 isoforms named as PKM1/M2. The activity of the M2 isoform (but not the M1 isoform) can be inhibited by tyrosine kinase signalling in tumour cells. The primary pyruvate kinase isoform before tumour development is PK-M1; however, the primary isoform from four independent tumours is PK-M2.(PMID:18337823). This antibody can recognize both PK-M1 and PK-M2.

Bemerkenswerte Veröffentlichungen

Verfasser	Pubmed ID	Journal	Anwendung
Guang Yang	33372411	EMBO Rep	WB,IP

Lagerung

Lagerungsbedingungen:

Bei -20°C lagern. Nach dem Versand ein Jahr lang stabil

Lagerungspuffer:

PBS mit 0.02% Natriumazid und 50% Glycerin pH 7.3.

Aliquotieren ist nicht notwendig bei -20°C Lagerung

***** 20ul-Größen enthalten 0.1% BSA**

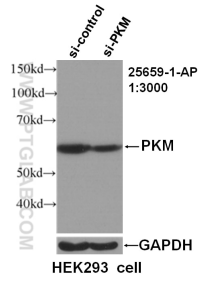
For technical support and original validation data for this product please contact:

T: 1 (888) 4PTGLAB (1-888-478-4522) (toll free in USA), or 1(312) 455-8498 (outside USA)

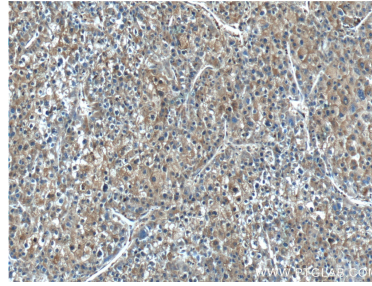
E: proteintech@ptglab.com
W: ptglab.com

This product is exclusively available under Proteintech Group brand and is not available to purchase from any other manufacturer.

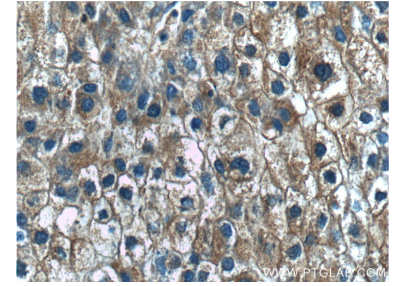
Ausgewählte Validierungsdaten



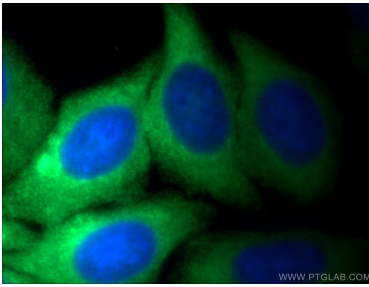
WB result of PKM antibody (25659-1-AP, 1:3000) with si-control and si-PKM transfected HEK293 cell.



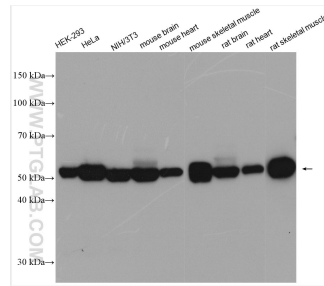
Immunohistochemical analysis of paraffin-embedded human liver cancer tissue slide using 25659-1-AP (PKM Antibody) at dilution of 1:200 (under 10x lens).



Immunohistochemical analysis of paraffin-embedded human liver cancer tissue slide using 25659-1-AP (PKM Antibody) at dilution of 1:200 (under 40x lens).



Immunofluorescent analysis of HeLa cells using 25659-1-AP (PKM antibody) at dilution of 1:50 and Alexa Fluor 488-conjugated AffiniPure Goat Anti-Rabbit IgG(H+L).



Various lysates were subjected to SDS PAGE followed by western blot with 25659-1-AP (PKM antibody) at dilution of 1:1500 incubated at room temperature for 1.5 hours.