

Allgemeine Informationen

Katalog-Nr.: 25715-1-AP	GenBank-Zugangsnummer: BC007016	Reinigungsmethode: Antigen-Affinitätsreinigung
Größe: 150ul , Konzentration: 400 µg/ml von Nanodrop;	GeneID (NCBI): 6696	Empfohlene Verdünnungen: WB 1:500-1:1000 IHC 1:50-1:500
Wirt: Kaninchen	Vollständiger Name: secreted phosphoprotein 1	
Isotyp: IgG	Berechnete Masse: 314 aa, 35 kDa	
Immunogen Katalognummer: AG22588	Beobachtete Masse: 66 kDa	

Anwendungen

Geprüfte Anwendungen: IHC, WB, ELISA	Positivkontrollen:
In Publikationen genannte Anwendungen: IF, IHC, WB	WB : Mausnierengewebe, C2C12-Zellen, Rattennierengewebe
Getestete Reaktivität: Human, Maus, Ratte	IHC : humanes Magenkrebsgewebe, humanes Dünndarmgewebe, humanes Nierengewebe
Zitierte Arten: Human, Maus, Ratte	
Hinweis-IHC: Antigenmaskierung mit TE-Puffer pH 9,0 empfohlen. (*) Wahlweise kann die Antigenmaskierung auch mit Citratpuffer pH 6,0 erfolgen.	

Hintergrundinformationen

Osteopontin (OPN), also known as SPP1, is a secreted glycoprophosphoprotein that belongs to the small integrin-binding ligand N-linked glycoprotein (SIBLING) family. Originally isolated from bone, OPN has been found in kidney, vascular tissues, biological fluids, and various tumor tissues (PMID: 15138464; 16406521). OPN can interact with CD44 and integrins and regulate diverse biological processes. It has a multifaceted role in bone development and remodeling, and is also involved in the inflammatory and immune response, oncogenesis and cancer progression. The very acidic nature of OPN, as well as the presence of variable posttranslational modifications, has led to anomalous migration in SDS-polyacrylamide gels and therefore to reports of different molecular weights for OPN (PMID: 8293561). Depending on the cell and tissue source and/or the SDS-PAGE system, OPN migrates with a molecular weight of 44-80 kDa, as well as at some smaller bands correspond to peptide fragments (PMID: 8195113; 17890765).

Bemerkenswerte Veröffentlichungen

Verfasser	Pubmed ID	Journal	Anwendung
Christian Stern	31561491	Int J Mol Sci	WB
Lin Liu	36309970	Clin Exp Pharmacol Physiol	WB
Xiaopei Wu	33449642	ACS Biomater Sci Eng	WB, IHC

Lagerung

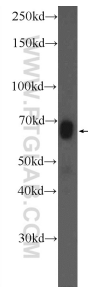
Lagerungsbedingungen:
Bei -20°C lagern. Nach dem Versand ein Jahr lang stabil
Lagerungspuffer:
PBS mit 0.02% Natriumazid und 50% Glycerin pH 7.3.
 Aliquotieren ist nicht notwendig bei -20°C Lagerung

*** 20ul-Größen enthalten 0.1% BSA

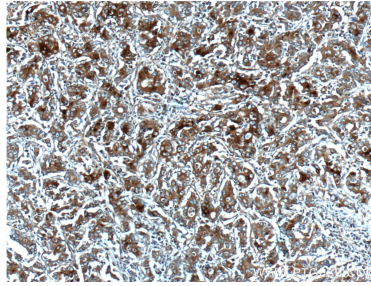
For technical support and original validation data for this product please contact:
 T: 1 (888) 4PTGLAB (1-888-478-4522) (toll free in USA), or 1(312) 455-8498 (outside USA)
 E: proteintech@ptglab.com
 W: ptglab.com

This product is exclusively available under Proteintech Group brand and is not available to purchase from any other manufacturer.

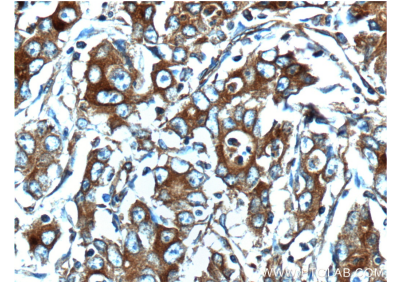
Ausgewählte Validierungsdaten



mouse kidney tissue were subjected to SDS PAGE followed by western blot with 25715-1-AP (Osteopontin antibody at dilution of 1:600 incubated at room temperature for 1.5 hours.



Immunohistochemical analysis of paraffin-embedded human stomach cancer tissue slide using 25715-1-AP (Osteopontin antibody at dilution of 1:200 (under 10x lens).



Immunohistochemical analysis of paraffin-embedded human stomach cancer tissue slide using 25715-1-AP (Osteopontin antibody at dilution of 1:200 (under 40x lens).