

Nur für Forschungszwecke

ATP1A3 Polyklonaler Antikörper

Katalog-Nr.:25727-1-AP



Allgemeine Informationen

Katalog-Nr.: 25727-1-AP	GenBank-Zugangsnummer: BC015566	Reinigungsmethode: Antigen-Affinitätsreinigung
Größe: 150ul , Konzentration: 1000 µg/ml von478 Nanodrop;	GeneID (NCBI): Vollständiger Name: ATPase, Na ⁺ /K ⁺ transporting, alpha 3 polypeptide	Empfohlene Verdünnungen: WB 1:2000-1:16000 IP 0.5-4.0 ug für IP und 1:500-1:1000 für WB IHC 1:50-1:500 IF 1:50-1:500
Wirt: Kaninchen	Berechnete Masse: 1013 aa, 112 kDa	
Isotyp: IgG	Beobachtete Masse: 110-113 kDa	
Immunogen Katalognummer: AG22842		

Anwendungen

Geprüfte Anwendungen: IF, IHC, IP, WB, ELISA	Positivkontrollen: WB : Maushirngewebe, IP : Rattenhirngewebe, IHC : humanes Prostatakarzinomgewebe, IF : Maushirngewebe,
Getestete Reaktivität: Human, Maus, Ratte	
Hinweis-IHC: Antigenmaskierung mit TE-Puffer pH 9,0 empfohlen. (*) Wahlweise kann die Antigenmaskierung auch mit Citratpuffer pH 6,0 erfolgen.	

Hintergrundinformationen

ATP1A3 participates in the catalytic hydrolysis of ATP and the exchanging of sodium and potassium ions across plasma membrane. The catalytic activity mode is $ATP + H_2O + Na^+(In) + K^+(Out) = ADP + phosphate + Na^+(Out) + K^+(In)$. It has been published that the neurologic disorders rapid-onset dystonia-parkinsonism (RDP), alternating hemiplegia of childhood (ACH) and CAPOS syndrome (cerebellar ataxia, areflexia, pes cavus, optic atrophy and sensorineural hearing loss) are all related with the mutation of ATP1A3. There are other reports suggest that early life epilepsy and episodic apnea revealing are potentially associated with the mutation of ATP1A3 as a result of impairment of Na/K homeostasis. This antibody is generated against the C-terminal region (665-1013aa) of ATP1A3 and detects the band around 100-113 kDa in SDS-PAGE.(PMID: 30097153, 20301294, 29922587)

Lagerung

Lagerungsbedingungen:
Bei -20°C lagern. Nach dem Versand ein Jahr lang stabil
Lagerungspuffer:
PBS mit 0.02% Natriumazid und 50% Glycerin pH 7.3.
Aliquotieren ist nicht notwendig bei -20°C Lagerung

*** 20ul-Größen enthalten 0.1% BSA

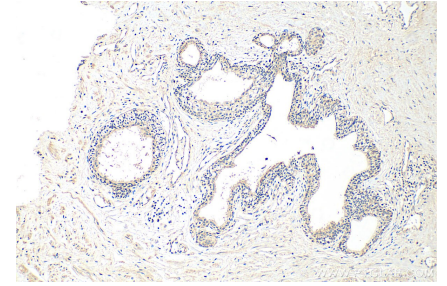
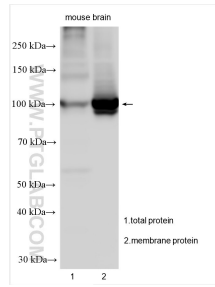
For technical support and original validation data for this product please contact:
T: 1 (888) 4PTGLAB (1-888-478-4522) (toll free in USA), or 1(312) 455-8498 (outside USA)
E: proteintech@ptglab.com
W: ptglab.com

This product is exclusively available under Proteintech Group brand and is not available to purchase from any other manufacturer.

Ausgewählte Validierungsdaten

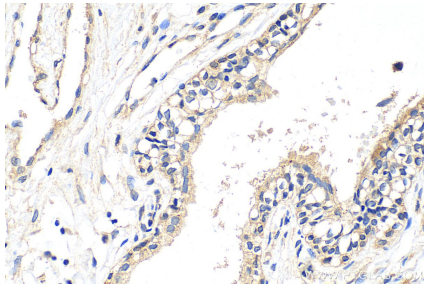


IP Result of anti-ATP1A3 (IP:25727-1-AP, 4ug;
Detection:25727-1-AP 1:500) with rat brain tissue
lysate 4000ug.

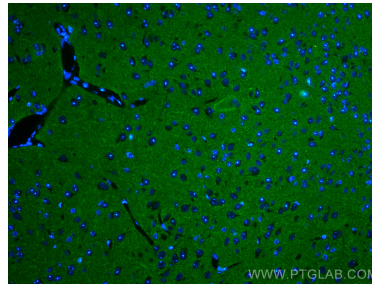


Various lysates were subjected to SDS PAGE followed by western blot with 25727-1-AP (ATP1A3 antibody) at dilution of 1:8000 incubated at room temperature for 1.5 hours.

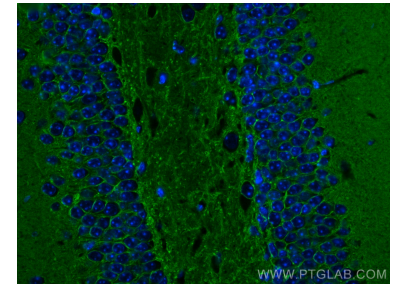
Immunohistochemical analysis of paraffin-embedded human prostate cancer tissue slide using 25727-1-AP (ATP1A3 antibody) at dilution of 1:200 (under 10x lens). Heat mediated antigen retrieval with Tris-EDTA buffer (pH 9.0).



Immunohistochemical analysis of paraffin-embedded human prostate cancer tissue slide using 25727-1-AP (ATP1A3 antibody) at dilution of 1:200 (under 40x lens). Heat mediated antigen retrieval with Tris-EDTA buffer (pH 9.0).



Immunofluorescent analysis of (4% PFA) fixed mouse brain tissue using ATP1A3 antibody (25727-1-AP) at dilution of 1:200 and CoraLite®488-Conjugated AffiniPure Goat Anti-Rabbit IgG(H+L).



Immunofluorescent analysis of (4% PFA) fixed mouse brain tissue using ATP1A3 antibody (25727-1-AP) at dilution of 1:200 and CoraLite®488-Conjugated AffiniPure Goat Anti-Rabbit IgG(H+L).