

Nur für Forschungszwecke

Caspr2 Polyklonaler Antikörper

Katalog-Nr.:25838-1-AP



Allgemeine Informationen

Katalog-Nr.: 25838-1-AP	GenBank-Zugangsnummer: BC113373	Reinigungsmethode: Antigen-Affinitätsreinigung
Größe: 150ul , Konzentration: 450 µg/ml von Nanodrop;	GeneID (NCBI): 26047	Empfohlene Verdünnungen: WB 1:1000-1:4000
Wirt: Kaninchen	Vollständiger Name: contactin associated protein-like 2	
Isotyp: IgG	Berechnete Masse: 1331 aa, 148 kDa	
Immunogen Katalognummer: AG22844	Beobachtete Masse: 148 kDa	

Anwendungen

Geprüfte Anwendungen: WB, ELISA	Positivkontrollen: WB : Maushirngewebe, Hausschwein-Hirngewebe, Rattenhirngewebe
Getestete Reaktivität: Hausschwein, Human, Maus, Ratte	

Hintergrundinformationen

Caspr2 is a member of the neurexin family which functions in the vertebrate nervous system as cell adhesion molecules and receptors. This protein, like other neurexin proteins, contains epidermal growth factor repeats and laminin G domains. In addition, it includes an F5/8 type C domain, discoidin/neuropilin- and fibrinogen-like domains, thrombospondin N-terminal-like domains and a putative PDZ binding site. This protein is localized at the juxtaparanodes of myelinated axons, and mediates interactions between neurons and glia during nervous system development and is also involved in localization of potassium channels within differentiating axons. This gene encompasses almost 1.5% of chromosome 7 and is one of the largest genes in the human genome. It is directly bound and regulated by forkhead box protein P2, a transcription factor related to speech and language development.

Lagerung

Lagerungsbedingungen:
Bei -20°C lagern. Nach dem Versand ein Jahr lang stabil
Lagerungspuffer:
PBS mit 0.02% Natriumazid und 50% Glycerin pH 7.3.
Aliquotieren ist nicht notwendig bei -20°C Lagerung

*** 20ul-Größen enthalten 0.1% BSA

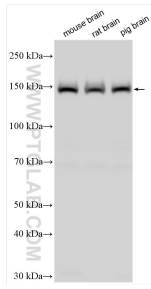
For technical support and original validation data for this product please contact:

T: 1 (888) 4PTGLAB (1-888-478-4522) (toll free in USA), or 1(312) 455-8498 (outside USA)

E: proteintech@ptglab.com
W: ptglab.com

This product is exclusively available under Proteintech Group brand and is not available to purchase from any other manufacturer.

Ausgewählte Validierungsdaten



Various lysates were subjected to SDS PAGE followed by western blot with 25838-1-AP (Caspr2 antibody) at dilution of 1:2000 incubated at room temperature for 1.5 hours.