

Nur für Forschungszwecke

c-Met (Cytoplasmic) Polyklonaler Antikörper



Katalog-Nr.: 25869-1-AP

Vorgestelltes Produkt

38 Publikationen

Allgemeine Informationen

Katalog-Nr.:
25869-1-AP

Größe:
150ul, Konzentration: 900 µg/ml von
Nanodrop und 433 µg/ml durch die
Bradford-Methode mit BSA als
Standard;

Wirt:
Kaninchen

Isotyp:
IgG

Immunogen Katalognummer:
AG23140

GenBank-Zugangsnummer:
BC130420

GeneID (NCBI):
4233

Vollständiger Name:
met proto-oncogene (hepatocyte
growth factor receptor)

Berechnete Masse:
1390 aa, 155 kDa

Beobachtete Masse:
145 kDa

Reinigungsmethode:

Antigen-Affinitätsreinigung

Empfohlene Verdünnungen:

WB 1:200-1:1000
IP 0.5-4.0 µg für IP und 1:200-1:1000
für WB
IHC 1:500-1:2000

Anwendungen

Geprüfte Anwendungen:

FC (intra), IHC, IP, WB, ELISA

In Publikationen genannte Anwendungen:

IF, IHC, IP, WB

Getestete Reaktivität:

Human, Hund, Maus, Ratte

Zitierte Arten:

Human, Maus, Ratte

Hinweis-IHC: Antigendemaskierung mit TE-Puffer pH 9,0 empfohlen. (*) Wahlweise kann die Antigendemaskierung auch mit Citratpuffer pH 6,0 erfolgen.

Positivkontrollen:

WB: Mauslebergewebe, A431-Zellen, HepG2-Zellen, MDCK-Zellen, Rattenlebergewebe

IP: HeLa-Zellen,

IHC: humanes Lungenkarzinomgewebe, humanes Kolongewebe, humanes Leberkarzinomgewebe, humanes Mammakarzinomgewebe

Hintergrundinformationen

c-Met (also named as MET or HGFR) is a receptor tyrosine kinase that transduces signals from the extracellular matrix into the cytoplasm by binding to HGF ligand. c-Met regulates many physiological processes including proliferation, scattering, morphogenesis and survival. The primary single chain precursor protein is post-translationally cleaved to produce the alpha and beta subunits, which are disulfide linked to form the mature receptor. Overexpression and/or mutation of c-Met has been reported in various human malignancies, including lung cancer, breast cancer, head and neck cancer, gastric cancer, colorectal cancer, bladder cancer, uterine cervix carcinoma, and esophageal carcinoma, c-Met could serve as an important therapeutic target (PMID: 26036285). The c-met receptor is a 190-kD glycoprotein consisting of a 145-kD membrane-spanning beta chain and a 50-kD alpha chain (PMID: 7806559). In Western blot, this antibody produces bands of unknown identity at 55 and 100 kDa.

Bemerkenswerte Veröffentlichungen

Verfasser	Pubmed ID	Journal	Anwendung
Dali Zhao	3455268	FEBS Open Bio	WB
Guichuan Huang	36211385	Front Immunol	WB
Enliang Li	34479614	J Exp Clin Cancer Res	WB, IHC

Lagerung

Lagerungsbedingungen:

Bei -20°C lagern. Nach dem Versand ein Jahr lang stabil

Lagerungspuffer:

PBS mit 0.02% Natriumazid und 50% Glycerin pH 7.3.

Aliquotieren ist nicht notwendig bei -20°C Lagerung

*** 20ul-Größen enthalten 0.1% BSA

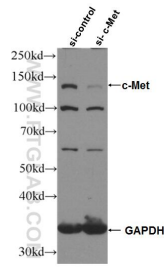
For technical support and original validation data for this product please contact:

T: 1 (888) 4PTGLAB (1-888-478-4522) (toll free in USA), or 1(312) 455-8498 (outside USA)

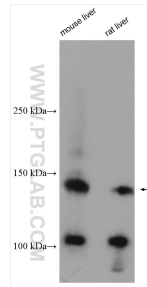
E: proteintech@ptglab.com
W: ptglab.com

This product is exclusively available under Proteintech Group brand and is not available to purchase from any other manufacturer.

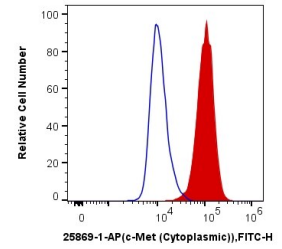
Ausgewählte Validierungsdaten



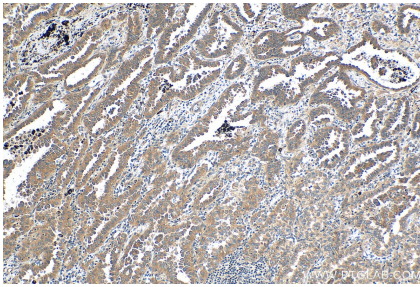
WB result of c-Met antibody (25869-1-AP; 1:5000; incubated at room temperature for 1.5 hours) with sh-Control and sh-c-Met transfected HepG2 cells.



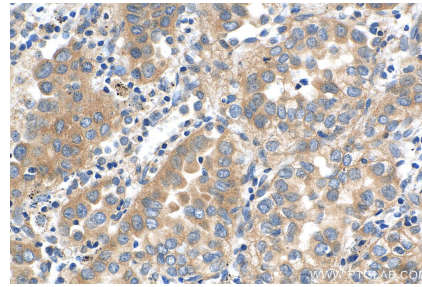
Various lysates were subjected to SDS PAGE followed by western blot with 25869-1-AP (c-Met (Cytoplasmic) antibody) at dilution of 1:300 incubated at room temperature for 1.5 hours.



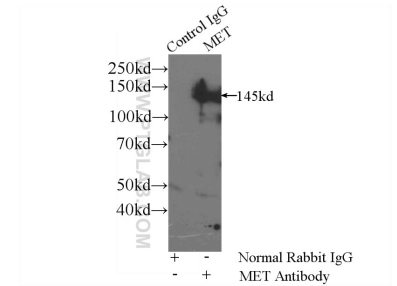
1X10⁶ HeLa cells were intracellularly stained with 0.4 ug Anti-Human c-Met (Cytoplasmic) (25869-1-AP) and CoraLite®488-Conjugated AffiniPure Goat Anti-Rabbit IgG(H+L) at dilution 1:1000 (red), or 0.4 ug Control Antibody. Cells were fixed with 4% PFA and permeabilized with Flow Cytometry Perm Buffer (PF00011-C).



Immunohistochemical analysis of paraffin-embedded human lung cancer tissue slide using 25869-1-AP (c-Met (Cytoplasmic) antibody) at dilution of 1:1000 (under 10x lens). Heat mediated antigen retrieval with Tris-EDTA buffer (pH 9.0).



Immunohistochemical analysis of paraffin-embedded human lung cancer tissue slide using 25869-1-AP (c-Met (Cytoplasmic) antibody) at dilution of 1:1000 (under 40x lens). Heat mediated antigen retrieval with Tris-EDTA buffer (pH 9.0).



IP Result of anti-c-Met (Cytoplasmic) (IP:25869-1-AP, 5ug; Detection:25869-1-AP 1:300) with HeLa cells lysate 1600ug.