

Nur für Forschungszwecke

Chk1 Polyklonaler Antikörper

Katalog-Nr.:25887-1-AP

Vorgestelltes Produkt

16 Publikationen



Allgemeine Informationen

Katalog-Nr.:
25887-1-AP

Größe:
150ul , Konzentration: 500 µg/ml von
Nanodrop und 367 µg/ml durch die
Bradford-Methode mit BSA als
Standard;

Wirt:
Kaninchen

Isotyp:
IgG

Immunogen Katalognummer:
AG22993

GenBank-Zugangsnummer:
BC004202

GeneID (NCBI):
1111

Vollständiger Name:
CHK1 checkpoint homolog (S. pombe)

Berechnete Masse:
54 kDa

Beobachtete Masse:
55 kDa

Reinigungsmethode:

Antigen-Affinitätsreinigung

Empfohlene Verdünnungen:

WB 1:1000-1:6000

IP 0.5-4.0 ug für IP und 1:500-1:1000

für WB

IHC 1:100-1:400

IF 1:50-1:500

Anwendungen

Geprüfte Anwendungen:

FC, IF, IHC, IP, WB, ELISA

In Publikationen genannte Anwendungen:

CoIP, IF, IHC, IP, WB

Getestete Reaktivität:

Human

Zitierte Arten:

Human, Maus

Hinweis-IHC: Antigendemaskierung mit TE-Puffer pH 9,0 empfohlen. (*) Wahlweise kann die Antigendemaskierung auch mit Citratpuffer pH 6,0 erfolgen.

Positivkontrollen:

WB : HEK-293T-Zellen, HeLa-Zellen, K-562-Zellen, MCF-7-Zellen

IP : HEK-293T-Zellen,

IHC : humanes Nierengewebe,

IF : HEK-293T-Zellen,

Hintergrundinformationen

CHEK1(Checkpoint kinase-1) is also named as CHK1 and belongs to the protein kinase superfamily. It is implicated in a circuit in which it activates checkpoints, DNA repair and proliferating cell nuclear antigen and FANCD2 monoubiquitinylation(PMID:21389083). CHEK1 protects vertebrate cells against spontaneous chromosome missegregation and is required to sustain anaphase delay when spindle function is disrupted by taxol(PMID:17276342). It has 3 isoforms produced by alternative splicing with the molecular mass of 54 kDa, 44 kDa and 50 kDa.

Bemerkenswerte Veröffentlichungen

Verfasser	Pubmed ID	Journal	Anwendung
Yeunting Hsieh	32988875	Anticancer Res	WB
Jingyuan Sun	33087136	J Exp Clin Cancer Res	WB,IF
Tai-Hsin Tsai	34858180	Front Pharmacol	WB

Lagerung

Lagerungsbedingungen:

Bei -20°C lagern. Nach dem Versand ein Jahr lang stabil

Lagerungspuffer:

PBS mit 0.02% Natriumazid und 50% Glycerin pH 7.3.

Aliquotieren ist nicht notwendig bei -20°C Lagerung

*** 20ul-Größen enthalten 0.1% BSA

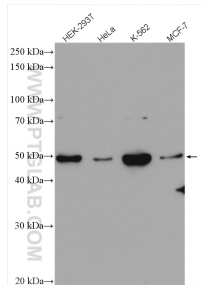
For technical support and original validation data for this product please contact:

T: 1 (888) 4PTGLAB (1-888-478-4522) (toll free in USA), or 1(312) 455-8498 (outside USA)

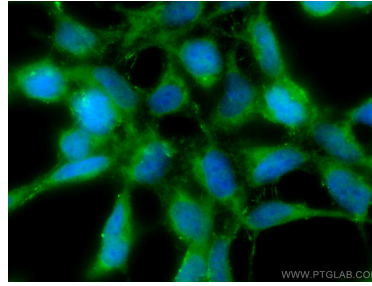
E: proteintech@ptglab.com
W: ptglab.com

This product is exclusively available under Proteintech Group brand and is not available to purchase from any other manufacturer.

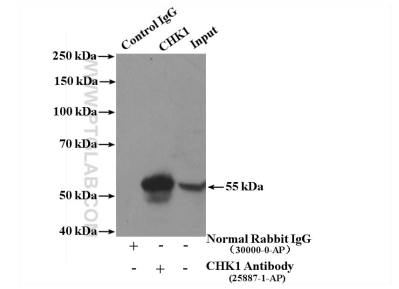
Ausgewählte Validierungsdaten



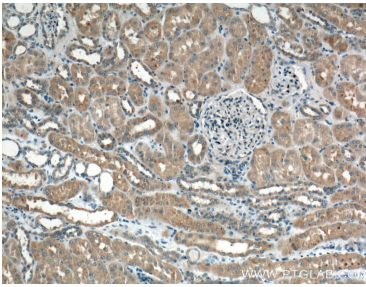
Various lysates were subjected to SDS PAGE followed by western blot with 25887-1-AP (Chk1 antibody) at dilution of 1:3000 incubated at room temperature for 1.5 hours.



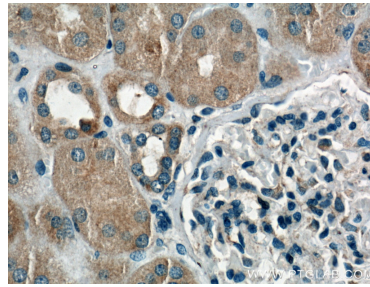
Immunofluorescent analysis of (-20°C Methanol) fixed HEK-293T cells using Chk1 antibody (25887-1-AP) at dilution of 1:200 and CoraLite® 488-Conjugated AffiniPure Goat Anti-Rabbit IgG(H+L).



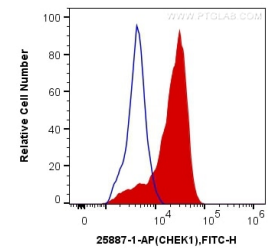
IP Result of anti-CHK1 (IP:25887-1-AP, 4ug; Detection:25887-1-AP 1:600) with HEK-293T cells lysate 4000ug.



Immunohistochemical analysis of paraffin-embedded human kidney tissue slide using 25887-1-AP (CHK1 Antibody) at dilution of 1:200 (under 10x lens).



Immunohistochemical analysis of paraffin-embedded human kidney tissue slide using 25887-1-AP (CHK1 Antibody) at dilution of 1:200 (under 40x lens).



1X10⁶ HEK-293T cells were intracellularly stained with 0.2 ug Anti-Human Chk1 (25887-1-AP) and CoraLite® 488-Conjugated AffiniPure Goat Anti-Rabbit IgG(H+L) at dilution 1:1000 (red), or 0.2 ug Control Antibody. Cells were fixed and permeabilized with Transcription Factor Staining Buffer Kit (PF00011).