

Allgemeine Informationen

Katalog-Nr.: 25979-1-AP	GenBank-Zugangsnummer: BC140875	Reinigungsmethode: Antigen-Affinitätsreinigung
Größe: 150ul, Konzentration: 750 µg/ml von Nanodrop und 427 µg/ml durch die Bradford-Methode mit BSA als Standard;	GeneID (NCBI): 56704	Empfohlene Verdünnungen: WB 1:1000-1:4000 IHC 1:50-1:500
Wirt: Kaninchen	Vollständiger Name: junctophilin 1	
Isotyp: IgG	Berechnete Masse: 72 kDa	
Immunogen Katalognummer: AG23270	Beobachtete Masse: 72 kDa	

Anwendungen

Geprüfte Anwendungen: IHC, WB, ELISA	Positivkontrollen:
Getestete Reaktivität: Human, Maus, Ratte	WB: HEK-293-Zellen, Mausherzgewebe, Rattenherzgewebe
Hinweis-IHC: Antigenmaskierung mit TE- Puffer pH 9,0 empfohlen. (*) Wahlweise kann die Antigenmaskierung auch mit Citratpuffer pH 6,0 erfolgen.	IHC: humanes Skelettmuskelgewebe, humanes Hautgewebe

Hintergrundinformationen

Junctophilin-1 is a protein that in humans is encoded by the JPH1 gene. This gene is a member of the junctophilin gene family. Junctional complexes between the plasma membrane and endoplasmic/sarcoplasmic reticulum are a common feature of all excitable cell types and mediate cross talk between cell surface and intracellular ion channels. The protein encoded by this gene is a component of junctional complexes and is composed of a C-terminal hydrophobic segment spanning the endoplasmic/sarcoplasmic reticulum membrane and a remaining cytoplasmic domain that shows specific affinity for the plasma membrane.

Lagerung

Lagerungsbedingungen:
Bei -20°C lagern. Nach dem Versand ein Jahr lang stabil
Lagerungspuffer:
PBS mit 0.02% Natriumazid und 50% Glycerin pH 7.3.
Aliquotieren ist nicht notwendig bei -20°C Lagerung

*** 20ul-Größen enthalten 0.1% BSA

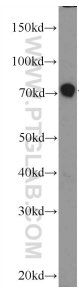
For technical support and original validation data for this product please contact:

T: 1 (888) 4PTGLAB (1-888-478-4522) (toll free
in USA), or 1(312) 455-8498 (outside USA)

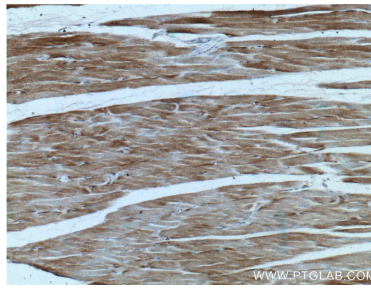
E: proteintech@ptglab.com
W: ptglab.com

This product is exclusively available under Proteintech Group brand and is not available to purchase from any other manufacturer.

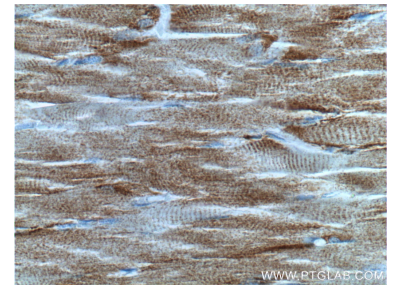
Ausgewählte Validierungsdaten



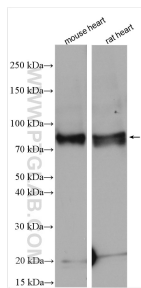
HEK-293 cells were subjected to SDS PAGE followed by western blot with 25979-1-AP (JPH1 Antibody) at dilution of 1:2000 incubated at room temperature for 1.5 hours.



Immunohistochemical analysis of paraffin-embedded human skeletal muscle tissue slide using 25979-1-AP (JPH1 antibody) at dilution of 1:200 (under 10x lens).



Immunohistochemical analysis of paraffin-embedded human skeletal muscle tissue slide using 25979-1-AP (JPH1 antibody) at dilution of 1:200 (under 40x lens).



Various lysates were subjected to SDS PAGE followed by western blot with 25979-1-AP (JPH1 antibody) at dilution of 1:1000 incubated at room temperature for 1.5 hours.