

## Allgemeine Informationen

|  |  |   |
|--|--|---|
| <b>Katalog-Nr.:</b><br>26013-1-AP  | <b>GenBank-Zugangsnummer:</b><br>BC125087                      | <b>Reinigungsmethode:</b><br>Antigen-Affinitätsreinigung                                |
| <b>Größe:</b><br>150ul, Konzentration: 600 µg/ml von Nanodrop und 333 µg/ml durch die Bradford-Methode mit BSA als Standard; | <b>GeneID (NCBI):</b><br>51134                                 | <b>Empfohlene Verdünnungen:</b><br>WB 1:500-1:1000<br>IHC 1:50-1:500<br>IF 1:400-1:1600 |
| <b>Wirt:</b><br>Kaninchen  | <b>Vollständiger Name:</b><br>coiled-coil domain containing 41 |   |
| <b>Isotyp:</b><br>IgG  | <b>Berechnete Masse:</b><br>693 aa, 82 kDa                     |   |
| <b>Immunogen Katalognummer:</b><br>AG22826   | <b>Beobachtete Masse:</b><br>83 kDa, 68 kDa                    |   |

## Anwendungen

|   |  |
|---|--|
| <b>Geprüfte Anwendungen:</b><br>IF, IHC, WB, ELISA      | <b>Positivkontrollen:</b><br>WB: HEK-293-Zellen,<br>IHC: humanes Nierengewebe,<br>IF: hTERT-RPE1-Zellen, |
| <b>In Publikationen genannte Anwendungen:</b><br>IF, WB |  |
| <b>Getestete Reaktivität:</b><br>Human                  |  |
| <b>Zitierte Arten:</b><br>Human, Maus                   |  |

**Hinweis-IHC: Antigenmaskierung mit TE-Puffer pH 9,0 empfohlen. (\*) Wahlweise kann die Antigenmaskierung auch mit Citratpuffer pH 6,0 erfolgen.**

## Hintergrundinformationen

CEP83 (centrosomal protein, 83 kDa), also known as CCDC41 (coiled-coil domain containing 41), is required for ciliary vesicle docking to the mother centriole. It is a key component of the centriolar distal appendages. CCDC41 may collaborate with IFT20 in the trafficking of ciliary membrane proteins from the Golgi complex to the cilium during the initiation of primary cilium assembly (PMID: 23530209). Alternative splicing results in transcript variants encoding two isoforms with calculated molecular weights of 83 kDa and 68 kDa, respectively.

## Bemerkenswerte Veröffentlichungen

| Verfasser          | Pubmed ID | Journal           | Anwendung |
|--------------------|-----------|-------------------|-----------|
| Pierrick Le Borgne | 36070319  | PLoS Biol         | IF        |
| Min Liu            | 34480124  | Cell Res          | WB,IF     |
| Delowar Hossain    | 31177295  | Cell Mol Life Sci | IF        |

## Lagerung

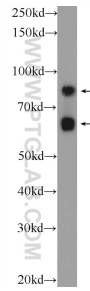
**Lagerungsbedingungen:**  
Bei -20°C lagern. Nach dem Versand ein Jahr lang stabil  
**Lagerungspuffer:**  
PBS mit 0.02% Natriumazid und 50% Glycerin pH 7.3.  
 Aliquotieren ist nicht notwendig bei -20°C Lagerung

**\*\*\* 20ul-Größen enthalten 0.1% BSA**

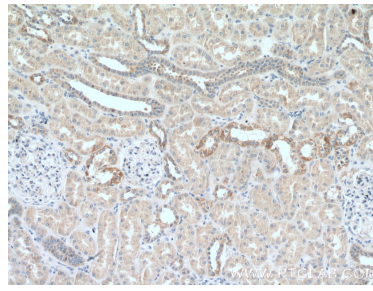
For technical support and original validation data for this product please contact:  
 T: 1 (888) 4PTGLAB (1-888-478-4522) (toll free in USA), or 1(312) 455-8498 (outside USA)  
 E: [proteintech@ptglab.com](mailto:proteintech@ptglab.com)  
 W: [ptglab.com](http://ptglab.com)

**This product is exclusively available under Proteintech Group brand and is not available to purchase from any other manufacturer.**

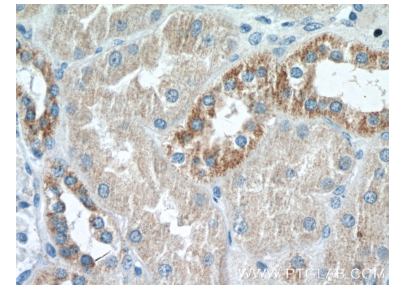
## Ausgewählte Validierungsdaten



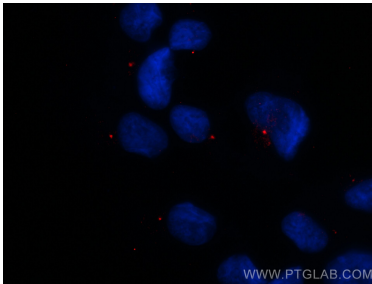
HEK-293 cells were subjected to SDS PAGE followed by western blot with 26013-1-AP (CEP83 Antibody) at dilution of 1:600 incubated at room temperature for 1.5 hours.



Immunohistochemical analysis of paraffin-embedded human kidney tissue slide using 26013-1-AP (CCDC41 antibody) at dilution of 1:200 (under 10x lens).



Immunohistochemical analysis of paraffin-embedded human kidney tissue slide using 26013-1-AP (CCDC41 antibody) at dilution of 1:200 (under 40x lens).



Immunofluorescent analysis of (-20°C Methanol) fixed hTERT-RPE1 cells using CEP83 antibody (26013-1-AP) at dilution of 1:800 and CoraLite®594-Conjugated AffiniPure Goat Anti-Rabbit IgG(H+L).