

Nur für Forschungszwecke

PEDF Polyklonaler Antikörper

Katalog-Nr.: 26045-1-AP

3 Publikationen



Allgemeine Informationen

Katalog-Nr.: 26045-1-AP	GenBank-Zugangsnummer: BC013984	Reinigungsmethode: Antigen-Affinitätsreinigung
Größe: 150ul, Konzentration: 350 µg/ml von Nanodrop und 233 µg/ml durch die Bradford-Methode mit BSA als Standard;	GeneID (NCBI): 5176	Empfohlene Verdünnungen: WB 1:500-1:2000
Wirt: Kaninchen	Vollständiger Name: serpin peptidase inhibitor, clade F (alpha-2 antiplasmin, pigment epithelium derived factor), member 1	
Isotyp: IgG	Berechnete Masse: 418 aa, 46 kDa	
Immunogen Katalognummer: AG23296	Beobachtete Masse: 46 kDa	

Anwendungen

Geprüfte Anwendungen: WB, ELISA	Positivkontrollen: WB: A375-Zellen, human serum
In Publikationen genannte Anwendungen: IF, WB	
Getestete Reaktivität: Human	
Zitierte Arten: Human	

Hintergrundinformationen

PEDF also known as serpin F1 (SERPINF1), is a multifunctional secreted protein that has anti-angiogenic, anti-tumorigenic, and neurotrophic functions. It is an approximately 50-kDa secreted protein that is widely expressed, including by osteoblasts and osteoclasts. PEDF is also one of the most abundant secretory products of adipocytes, and circulating concentrations of PEDF correlate positively with body fat mass and INS resistance. PEDF is a neurotrophic factor involved in neuronal differentiation in retinoblastoma cells. Mutations in this gene were found in individuals with osteogenesis imperfecta, type VI.

Bemerkenswerte Veröffentlichungen

Verfasser	Pubmed ID	Journal	Anwendung
Xiaoyan Fu	31113934	Cell Death Dis	WB
Hao Zhang	34278806	Hum Gene Ther	WB
Lele Li	37070131	J Cell Mol Med	WB,IF

Lagerung

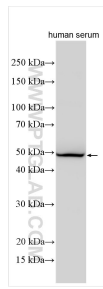
Lagerungsbedingungen:
Bei -20°C lagern. Nach dem Versand ein Jahr lang stabil
Lagerungspuffer:
PBS mit 0.02% Natriumazid und 50% Glycerin pH 7.3.
Aliquotieren ist nicht notwendig bei -20°C Lagerung

*** 20ul-Größen enthalten 0.1% BSA

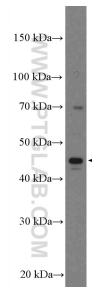
For technical support and original validation data for this product please contact:
T: 1 (888) 4PTGLAB (1-888-478-4522) (toll free in USA), or 1(312) 455-8498 (outside USA)
E: proteintech@ptglab.com
W: ptglab.com

This product is exclusively available under Proteintech Group brand and is not available to purchase from any other manufacturer.

Ausgewählte Validierungsdaten



human serum were subjected to SDS PAGE followed by western blot with 26045-1-AP (PEDF antibody) at dilution of 1:1000 incubated at room temperature for 1.5 hours.



A375 cells were subjected to SDS PAGE followed by western blot with 26045-1-AP (PEDF antibody) at dilution of 1:1000 incubated at room temperature for 1.5 hours.