

Nur für Forschungszwecke

# IL-1 beta Polyklonaler Antikörper

Katalog-Nr.: 26048-1-AP

55 Publikationen



## Allgemeine Informationen

<b>Katalog-Nr.:</b> 26048-1-AP	<b>GenBank-Zugangsnummer:</b> NM_008361	<b>Reinigungsmethode:</b> Antigen-Affinitätsreinigung
<b>Größe:</b> 150ul, Konzentration: 850 µg/ml von Nanodrop;	<b>GeneID (NCBI):</b> 16176	<b>Empfohlene Verdünnungen:</b> WB 1:1000-1:6000
<b>Wirt:</b> Kaninchen	<b>Vollständiger Name:</b> interleukin 1 beta	
<b>Isotyp:</b> IgG	<b>Berechnete Masse:</b> 31 kDa	
<b>Immunogen Katalognummer:</b> AG23461	<b>Beobachtete Masse:</b> 31 kDa	

## Anwendungen

<b>Geprüfte Anwendungen:</b> FC, WB, ELISA	<b>Positivkontrollen:</b> WB : RAW 264.7-Zellen,
<b>In Publikationen genannte Anwendungen:</b> ELISA, IF, IHC, WB	
<b>Getestete Reaktivität:</b> Maus	
<b>Zitierte Arten:</b> Human, Maus, Ratte	

## Hintergrundinformationen

Interleukin-1, produced mainly by blood monocytes, mediates the panoply of host reactions collectively known as acute phase response. It is identical to endogenous pyrogen. The multiple biologic activities that define IL1 are properties of a 15- to 18-kD protein that is derived from a 30- to 35-kD precursor. Interleukin 1β (IL-1B) is a member of the interleukin 1 cytokine family. It is a pro-inflammatory cytokine against infection, playing an important role in the pathogenesis of cancers. It signals through various adaptor proteins and kinases that lead to activation of numerous downstream targets.

## Bemerkenswerte Veröffentlichungen

Verfasser	Pubmed ID	Journal	Anwendung
Tung-Sheng Chen	36116531	Life Sci	IHC
Liang Wang	34594215	Front Pharmacol	ELISA
Meng-Ting Zhang	28843150	Biomed Pharmacother	WB

## Lagerung

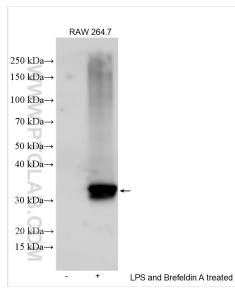
**Lagerungsbedingungen:**  
Bei -20°C lagern. Nach dem Versand ein Jahr lang stabil  
**Lagerungspuffer:**  
PBS mit 0.02% Natriumazid und 50% Glycerin pH 7.3.  
Aliquotieren ist nicht notwendig bei -20°C Lagerung

\*\*\* 20ul-Größen enthalten 0.1% BSA

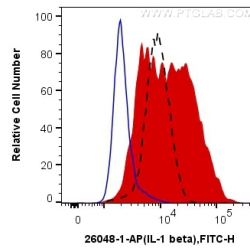
For technical support and original validation data for this product please contact:  
T: 1 (888) 4PTGLAB (1-888-478-4522) (toll free in USA), or 1(312) 455-8498 (outside USA)  
E: proteintech@ptglab.com  
W: ptglab.com

This product is exclusively available under Proteintech Group brand and is not available to purchase from any other manufacturer.

## Ausgewählte Validierungsdaten



LPS and Brefeldin A treated RAW 264.7 cells were subjected to SDS PAGE followed by western blot with 26048-1-AP (IL-1 beta antibody) at dilution of 1:3000 incubated at room temperature for 1.5 hours.



$1 \times 10^6$  RAW 264.7 cells untreated (dashed lines) and LPS and Brefeldin A treated (red) were intracellularly stained with 0.4  $\mu$ g Anti-Mouse IL-1 beta (26048-1-AP) and CoraLite<sup>®</sup>488-Conjugated AffiniPure Goat Anti-Rabbit IgG(H+L) at dilution 1:1000, or 0.4  $\mu$ g Control Antibody (blue). Cells were fixed with 4% PFA and permeabilized with Flow Cytometry Perm Buffer (PF00011-C).