

## Allgemeine Informationen

<b>Katalog-Nr.:</b> 26053-1-AP	<b>GenBank-Zugangsnummer:</b> BC017293	<b>Reinigungsmethode:</b> Antigen-Affinitätsreinigung
<b>Größe:</b> 150ul , Konzentration: 550 µg/ml von Nanodrop und 300 µg/ml durch die Bradford-Methode mit BSA als Standard;	<b>GeneID (NCBI):</b> 4478	<b>Empfohlene Verdünnungen:</b> WB 1:1000-1:6000 IHC 1:50-1:500 IF 1:20-1:200
<b>Wirt:</b> Kaninchen	<b>Vollständiger Name:</b> moesin	
<b>Isotyp:</b> IgG	<b>Berechnete Masse:</b> 577 aa, 68 kDa	
<b>Immunogen Katalognummer:</b> AG23531	<b>Beobachtete Masse:</b> 68-70 kDa	

## Anwendungen

<b>Geprüfte Anwendungen:</b> FC, IF, IHC, WB, ELISA	<b>Positivkontrollen:</b>
<b>Getestete Reaktivität:</b> Human, Maus, Ratte	<b>WB :</b> HeLa-Zellen, C6-Zellen, Jurkat-Zellen, Mausherzgewebe, Mauslungengewebe, Neuro-2a- Zellen, Rattenherzgewebe
<b>Hinweis-IHC: Antigenmaskierung mit TE- Puffer pH 9,0 empfohlen. (*) Wahlweise kann die Antigenmaskierung auch mit Citratpuffer pH 6,0 erfolgen.</b>	<b>IHC :</b> Mausnierengewebe, <b>IF :</b> HeLa-Zellen,

## Hintergrundinformationen

Moesin belongs to the ezrin-radixin-moesin (ERM) family of proteins which act as cross-linkers between membrane and actin cytoskeleton. ERM proteins provide structural links to strengthen the cell cortex and facilitate several key cellular processes, including membrane dynamics, substrate adhesion, cell survival, cell adhesion, and motility. The function of ERM proteins is highly reliant on phosphorylation induced conformational changes in response to growth factor, chemokine, and antigen stimulation. This antibody may cross-react with ezrin or radixin with molecular weights around 68-70 kDa.

## Lagerung

**Lagerungsbedingungen:**  
Bei -20°C lagern. Nach dem Versand ein Jahr lang stabil  
**Lagerungspuffer:**  
PBS mit 0.02% Natriumazid und 50% Glycerin pH 7.3.  
**Aliquotieren ist nicht notwendig bei -20°C Lagerung**

\*\*\* 20ul-Größen enthalten 0.1% BSA

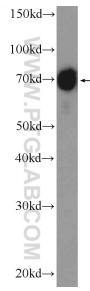
For technical support and original validation data for this product please contact:

T: 1 (888) 4PTGLAB (1-888-478-4522) (toll free  
in USA), or 1(312) 455-8498 (outside USA)

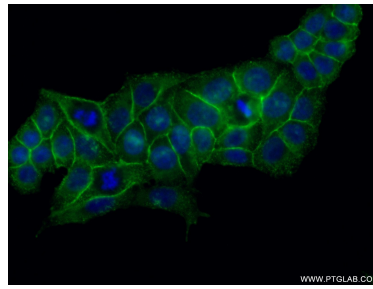
E: proteintech@ptglab.com  
W: ptglab.com

This product is exclusively available under Proteintech Group brand and is not available to purchase from any other manufacturer.

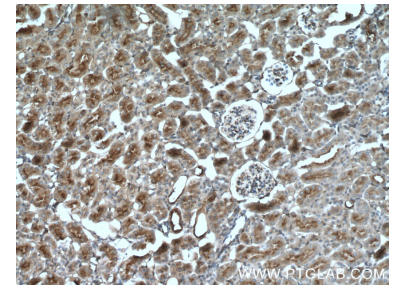
## Ausgewählte Validierungsdaten



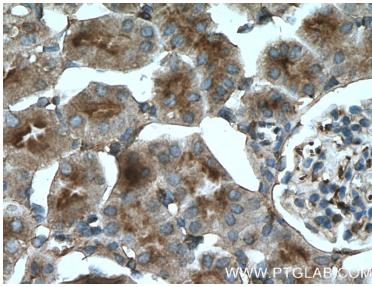
Jurkat cells were subjected to SDS PAGE followed by western blot with 26053-1-AP (MSN Antibody) at dilution of 1:1000 incubated at room temperature for 1.5 hours.



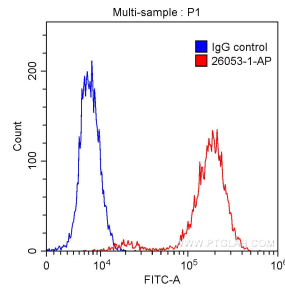
Immunofluorescent analysis of (-20°C Ethanol) fixed HeLa cells using 26053-1-AP (MSN antibody) at dilution of 1:50 and Alexa Fluor 488-conjugated AffiniPure Goat Anti-Rabbit IgG(H+L).



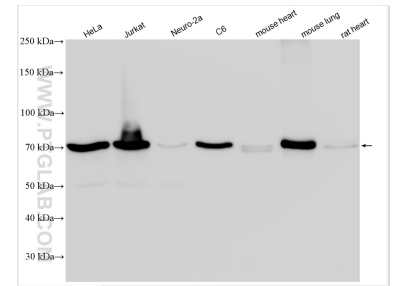
Immunohistochemical analysis of paraffin-embedded mouse kidney tissue slide using 26053-1-AP (MSN antibody) at dilution of 1:200 (under 10x lens. Heat mediated antigen retrieval with Tris-EDTA buffer (pH 9.0).



Immunohistochemical analysis of paraffin-embedded mouse kidney tissue slide using 26053-1-AP (MSN antibody) at dilution of 1:200 (under 40x lens. Heat mediated antigen retrieval with Tris-EDTA buffer (pH 9.0).



$1 \times 10^6$  HepG2 cells were intracellularly stained with 0.20ug Anti-Human MSN (26053-1-AP) (red) or 0.20 ug control antibody (blue) and CoraLite488-Conjugated AffiniPure Goat Anti-Rabbit IgG(H+L) with dilution 1:1000. Fixed with 90% MeOH.



Various lysates were subjected to SDS PAGE followed by western blot with 26053-1-AP (MSN antibody) at dilution of 1:3000 incubated at room temperature for 1.5 hours.