

Allgemeine Informationen

Katalog-Nr.: 26158-1-AP	GenBank-Zugangsnummer: BC007449	Reinigungsmethode: Protein-A-Reinigung
Größe: 150ul , Konzentration: 550 µg/ml von Nanodrop;	GeneID (NCBI): 57721	Empfohlene Verdünnungen: WB 1:2000-1:10000
Wirt: Kaninchen	Vollständiger Name: methyltransferase like 14	
Isotyp: IgG	Berechnete Masse: 456 aa, 52 kDa	
Immunogen Katalognummer: AG14325	Beobachtete Masse: 55-60 kDa	

Anwendungen

Geprüfte Anwendungen: WB, ELISA	Positivkontrollen: WB : A549-Zellen, HeLa-Zellen, NCCIT-Zellen, PC-3-Zellen
In Publikationen genannte Anwendungen: IF, IHC, IP, RIP, WB	
Getestete Reaktivität: Human	
Zitierte Arten: Affe, Huhn, Human	

Hintergrundinformationen

METTL14, is also named as Methyltransferase-like protein 14 or KIAA1627, is a 456 amino acid protein, which belongs to the MT-A70-like family and localized in the nucleus. The METTL3-METTL14 heterodimer forms a N6-methyltransferase complex that methylates adenosine residues of some mRNAs and regulates the circadian clock and differentiation of embryonic stem cells. N6-methyladenosine (m6A), which takes place at the 5'-[AG]GAC-3' consensus sites of some mRNAs, plays a role in the efficiency of mRNA splicing, processing and mRNA stability. M6A regulates the length of the circadian clock: acts as a early pace-setter in the circadian loop. M6A also acts as a regulator of mRNA stability: in embryonic stem cells (ESCs), m6A methylation of mRNAs encoding key naïve pluripotency-promoting transcripts results in transcript destabilization.

Bemerkenswerte Veröffentlichungen

Verfasser	Pubmed ID	Journal	Anwendung
Ying Yang	36149370	Chem Biodivers	WB,IP
Seiya Takemoto	34536357	Biochem Pharmacol	WB
FANG YANG	34733365	Oncol Lett	WB

Lagerung

Lagerungsbedingungen:
Bei -20°C lagern. Nach dem Versand ein Jahr lang stabil

Lagerungspuffer:
PBS mit 0.02% Natriumazid und 50% Glycerin pH 7.3.

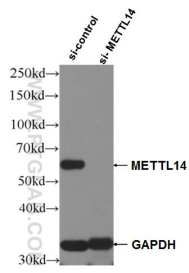
Aliquotieren ist nicht notwendig bei -20°C Lagerung

*** 20ul-Größen enthalten 0.1% BSA

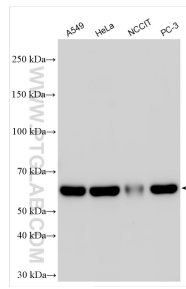
For technical support and original validation data for this product please contact:
 T: 1 (888) 4PTGLAB (1-888-478-4522) (toll free in USA), or 1(312) 455-8498 (outside USA)
 E: proteintech@ptglab.com
 W: ptglab.com

This product is exclusively available under Proteintech Group brand and is not available to purchase from any other manufacturer.

Ausgewählte Validierungsdaten



WB result of METTL14 antibody (26158-1-AP; 1:3000; incubated at room temperature for 1.5 hours) with sh-Control and sh-METTL14 transfected Raji cells.



Various lysates were subjected to SDS PAGE followed by western blot with 26158-1-AP (METTL14 antibody) at dilution of 1:5000 incubated at room temperature for 1.5 hours.