

Allgemeine Informationen

Katalog-Nr.:
26184-1-AP

Größe:
150ul, Konzentration: 1200 µg/ml von 64849
Nanodrop und 480 µg/ml durch die
Bradford-Methode mit BSA als
Standard;

Wirt:
Kaninchen

Isotyp:
IgG

Immunogen Katalognummer:
AG24182

GenBank-Zugangsnummer:
BC035966

GeneID (NCBI):

Vollständiger Name:
solute carrier family 13 (sodium-
dependent dicarboxylate transporter),
member 3

Berechnete Masse:

602 aa, 67 kDa

Beobachtete Masse:

65-70 kDa

Reinigungsmethode:

Antigen-Affinitätsreinigung

Empfohlene Verdünnungen:

IP 0.5-4.0 µg für IP und 1:500-1:1000

für WB

IHC 1:200-1:4000

Anwendungen

Geprüfte Anwendungen:

IHC, IP, ELISA

Getestete Reaktivität:

Human, Maus

**Hinweis-IHC: Antigenmaskierung mit TE-
Puffer pH 9,0 empfohlen. (*) Wahlweise
kann die Antigenmaskierung auch mit
Citratpuffer pH 6,0 erfolgen.**

Positivkontrollen:

IP : Mausnierengewebe,

IHC : humanes Nierengewebe,

Hintergrundinformationen

SLC13A3, also named NADC3 and SDCT2, belongs to the SLC13A/DASS transporter (TC 2.A.47) family and NADC subfamily. SLC13A3 encodes the plasma membrane Na⁺ /Dicarboxylate Cotransporter 3 (NaDC3), which imports inside the cell four to six carbon dicarboxylates as well as N-acetylaspartate (NAA). SLC13A3 is mainly expressed in kidney, but also in brain, liver, placenta and eye (PMID: 30635937).

Lagerung

Lagerungsbedingungen:

Bei -20°C lagern. Nach dem Versand ein Jahr lang stabil

Lagerungspuffer:

PBS mit 0.02% Natriumazid und 50% Glycerin pH 7.3.

Aliquotieren ist nicht notwendig bei -20°C Lagerung

***** 20ul-Größen enthalten 0.1% BSA**

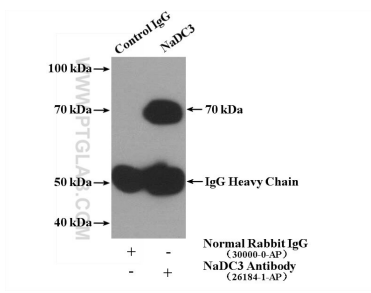
For technical support and original validation data for this product please contact:

T: 1 (888) 4PTGLAB (1-888-478-4522) (toll free
in USA), or 1(312) 455-8498 (outside USA)

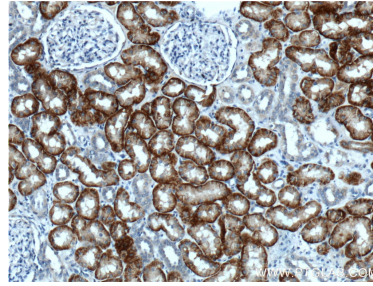
E: proteintech@ptglab.com
W: ptglab.com

**This product is exclusively available under Proteintech
Group brand and is not available to purchase from any
other manufacturer.**

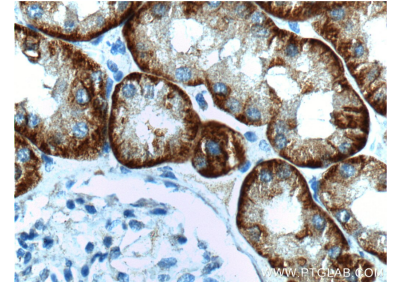
Ausgewählte Validierungsdaten



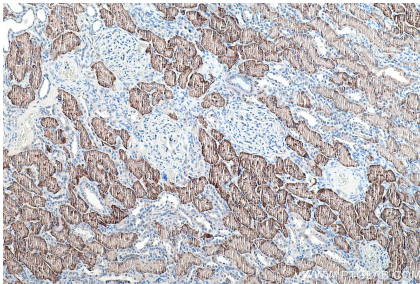
IP Result of anti-NaDC3 (IP:26184-1-AP, 4ug; Detection:26184-1-AP 1:500) with mouse kidney tissue lysate 4000ug.



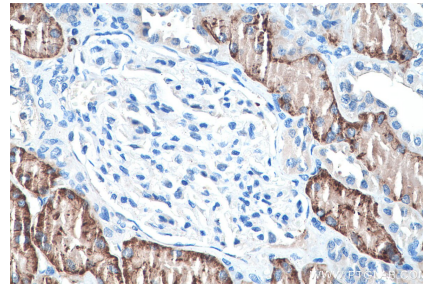
Immunohistochemical analysis of paraffin-embedded human kidney tissue slide using 26184-1-AP (NaDC3 antibody at dilution of 1:200 (under 10x lens).



Immunohistochemical analysis of paraffin-embedded human kidney tissue slide using 26184-1-AP (NaDC3 antibody at dilution of 1:200 (under 40x lens).



Immunohistochemical analysis of paraffin-embedded human kidney tissue slide using 26184-1-AP (SLC13A3 antibody) at dilution of 1:4000 (under 10x lens). Heat mediated antigen retrieval with Tris-EDTA buffer (pH 9.0).



Immunohistochemical analysis of paraffin-embedded human kidney tissue slide using 26184-1-AP (SLC13A3 antibody) at dilution of 1:4000 (under 40x lens). Heat mediated antigen retrieval with Tris-EDTA buffer (pH 9.0).