

Nur für Forschungszwecke

Gamma Tubulin Polyklonaler Antikörper



Katalog-Nr.: 26195-1-AP

Allgemeine Informationen

Katalog-Nr.: 26195-1-AP	GenBank-Zugangsnummer: BC000619	Reinigungsmethode: Antigen-Affinitätsreinigung
Größe: 150ul, Konzentration: 600 µg/ml von Nanodrop und 287 µg/ml durch die Bradford-Methode mit BSA als Standard;	GeneID (NCBI): 7283	Empfohlene Verdünnungen: WB 1:500-1:1000 IF 1:250-1:1000
Wirt: Kaninchen	Vollständiger Name: tubulin, gamma 1	
Isotyp: IgG	Berechnete Masse: 51 kDa	
Immunogen Katalognummer: AG23575	Beobachtete Masse: 50-55 kDa	

Anwendungen

Geprüfte Anwendungen: IF, WB, ELISA	Positivkontrollen: WB: Maushirngewebe, HeLa-Zellen
Getestete Reaktivität: Human, Hund, Maus	IF: C2C12-Zellen, MDCK-Zellen

Hintergrundinformationen

Gamma tubulin is a member of tubulin superfamily and is a key component required for microtubule nucleation and stabilization. It is concentrated at the pericentriolar material of centrosomes in interphase cells, predominantly on spindle poles in mitotic cells, while found in midbodies during cytokinesis. Overexpression of gamma tubulin has been found in various cancers including breast cancer and gliomas. This antibody can well label the centrosome structure.

Lagerung

Lagerungsbedingungen:
Bei -20°C lagern. Nach dem Versand ein Jahr lang stabil
Lagerungspuffer:
PBS mit 0.02% Natriumazid und 50% Glycerin pH 7.3.
Aliquotieren ist nicht notwendig bei -20°C Lagerung

***** 20ul-Größen enthalten 0.1% BSA**

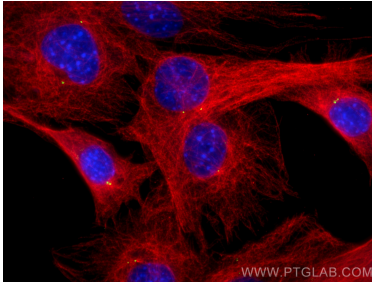
For technical support and original validation data for this product please contact:

T: 1 (888) 4PTGLAB (1-888-478-4522) (toll free in USA), or 1(312) 455-8498 (outside USA)

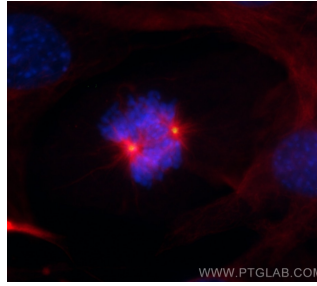
E: proteintech@ptglab.com
W: ptglab.com

This product is exclusively available under Proteintech Group brand and is not available to purchase from any other manufacturer.

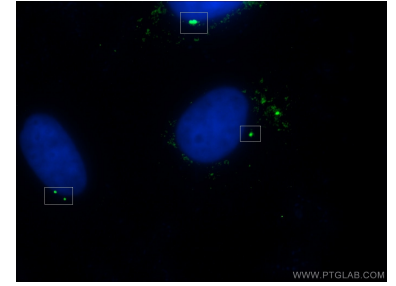
Ausgewählte Validierungsdaten



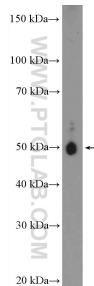
Immunofluorescent analysis of (4% PFA) fixed C2C12 cells using Gamma Tubulin antibody (26195-1-AP) at dilution of 1:500 and CoraLite®488-Conjugated AffiniPure Goat Anti-Rabbit IgG(H+L), Alpha Tubulin antibody (66031-1-Ig, Clone: 1E4C11, red).



Immunofluorescent analysis of (4% PFA) fixed C2C12 cells using Gamma Tubulin antibody (26195-1-AP) at dilution of 1:500 and CoraLite®488-Conjugated AffiniPure Goat Anti-Rabbit IgG(H+L), Alpha Tubulin antibody (66031-1-Ig, Clone: 1E4C11, red).



Immunofluorescent analysis of (-20°C Ethanol) fixed MDCK cells using 26195-1-AP (gamma tubulin antibody) at dilution of 1:50 and Alexa Fluor 488-conjugated AffiniPure Goat Anti-Rabbit IgG(H+L).



mouse brain tissue were subjected to SDS PAGE followed by western blot with 26195-1-AP (gamma tubulin antibody at dilution of 1:600 incubated at room temperature for 1.5 hours.