

## Allgemeine Informationen

<b>Katalog-Nr.:</b> 26381-1-AP	<b>GenBank-Zugangsnummer:</b> BC065522	<b>Reinigungsmethode:</b> Antigen-Affinitätsreinigung
<b>Größe:</b> 150ul, Konzentration: 400 µg/ml von Nanodrop und 233 µg/ml durch die Bradford-Methode mit BSA als Standard;	<b>GeneID (NCBI):</b> 7422	<b>Empfohlene Verdünnungen:</b> WB 1:500-1:3000 IHC 1:50-1:500
<b>Wirt:</b> Kaninchen	<b>Vollständiger Name:</b> vascular endothelial growth factor A	
<b>Isotyp:</b> IgG	<b>Berechnete Masse:</b> 412 aa, 46 kDa	
<b>Immunogen Katalognummer:</b> AG24740	<b>Beobachtete Masse:</b> 45 kDa	

## Anwendungen

<b>Geprüfte Anwendungen:</b> FC, IHC, WB, ELISA	<b>Positivkontrollen:</b> WB : HEK-293T-Zellen, HeLa-Zellen, Jurkat-Zellen
<b>In Publikationen genannte Anwendungen:</b> CoIP, IHC, WB	<b>IHC :</b> humanes Leberkarzinomgewebe, humanes Nierengewebe
<b>Getestete Reaktivität:</b> Human	
<b>Zitierte Arten:</b> Human	

**Hinweis-IHC: Antigendemaskierung mit TE-Puffer pH 9,0 empfohlen. (\*) Wahlweise kann die Antigendemaskierung auch mit Citratpuffer pH 6,0 erfolgen.**

## Hintergrundinformationen

VEGFA, also named as VEGF or VPF, belongs to the PDGF/VEGF growth factor family. It is a growth factor active in angiogenesis, vasculogenesis and endothelial cell growth. VEGFA induces endothelial cell proliferation, promotes cell migration, inhibits apoptosis and induces permeabilization of blood vessels. It binds to the FLT1/VEGFR1 and KDR/VEGFR2 receptors, heparan sulfate and heparin. Defects in VEGFA are associated with microvascular complications of diabetes type 1 (MVCD1). VEGFA has 17 isoforms with MW from 16 to 45 kDa. Some isoforms have homodimer forms (e.g.; VEGFA189 38 kDa or VEGFA110 34 kDa). VEGF-A exists in at least seven homodimeric isoforms. The monomers consist of 121, 145, 148, 165, 183, 189, or 206 amino acids (PMID:15602010).

## Bemerkenswerte Veröffentlichungen

Verfasser	Pubmed ID	Journal	Anwendung
Corry D Bondi	36139884	Antioxidants (Basel)	WB
Longyang Jin	34226531	Cell Death Discov	WB
Yu Miao	34434285	Oncol Lett	WB,IHC

## Lagerung

**Lagerungsbedingungen:**  
Bei -20°C lagern. Nach dem Versand ein Jahr lang stabil  
**Lagerungspuffer:**  
PBS mit 0.02% Natriumazid und 50% Glycerin pH 7.3.  
 Aliquotieren ist nicht notwendig bei -20°C Lagerung

\*\*\* 20ul-Größen enthalten 0.1% BSA

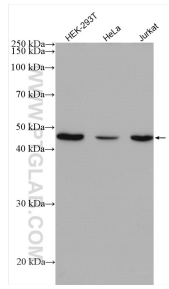
For technical support and original validation data for this product please contact:

T: 1 (888) 4PTGLAB (1-888-478-4522) (toll free in USA), or 1(312) 455-8498 (outside USA)

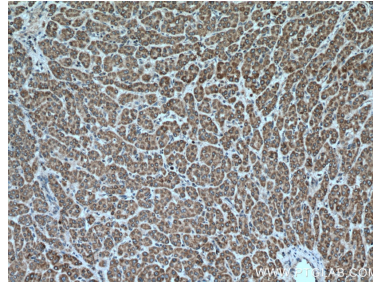
E: [proteintech@ptglab.com](mailto:proteintech@ptglab.com)  
 W: [ptglab.com](http://ptglab.com)

**This product is exclusively available under Proteintech Group brand and is not available to purchase from any other manufacturer.**

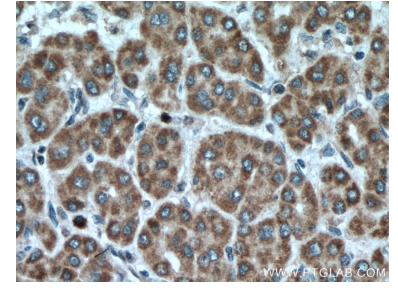
## Ausgewählte Validierungsdaten



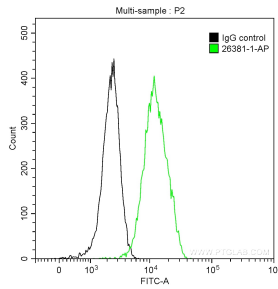
Various lysates were subjected to SDS PAGE followed by western blot with 26381-1-AP (VEGFA antibody) at dilution of 1:1500 incubated at room temperature for 1.5 hours.



Immunohistochemical analysis of paraffin-embedded human liver cancer tissue slide using 26381-1-AP (VEGFA antibody) at dilution of 1:200 (under 10x lens). Heat mediated antigen retrieval with Tris-EDTA buffer (pH 9.0).



Immunohistochemical analysis of paraffin-embedded human liver cancer tissue slide using 26381-1-AP (VEGFA antibody) at dilution of 1:200 (under 40x lens). Heat mediated antigen retrieval with Tris-EDTA buffer (pH 9.0).



1X10<sup>6</sup> NIH/3T3 cells were intracellularly stained with 0.2 ug Anti-Human VEGFA (26381-1-AP) and CoraLite®488-Conjugated AffiniPure Goat Anti-Rabbit IgG(H+L) at dilution 1:1000 (green), and 0.2 ug Control Antibody. Cells were fixed with 90% MeOH.