

Nur für Forschungszwecke

pan-keratin Polyklonaler Antikörper

Katalog-Nr.: 26411-1-AP

16 Publikationen



Allgemeine Informationen

Katalog-Nr.: 26411-1-AP	GenBank-Zugangsnummer: BC024292	Reinigungsmethode: Antigen-Affinitätsreinigung
Größe: 150ul, Konzentration: 700 µg/ml von Nanodrop und 300 µg/ml durch die Bradford-Methode mit BSA als Standard;	GeneID (NCBI): 3852	Empfohlene Verdünnungen: WB 1:50000-1:200000
Wirt: Kaninchen	Vollständiger Name: keratin 5	IHC 1: 1500-1:6000 IF 1: 200-1:800
Isotyp: IgG	Berechnete Masse: 590 aa, 62 kDa	
Immunogen Katalognummer: AG24184	Beobachtete Masse: 46-58 kDa	

Anwendungen

Geprüfte Anwendungen: FC, IF, IHC, WB, ELISA	Positivkontrollen: WB : A431-Zellen, HeLa-Zellen, MCF-7-Zellen
In Publikationen genannte Anwendungen: IF, IHC, WB	IHC : humanes Ösophagusgewebe, humanes Lebergewebe, humanes Lungenkarzinomgewebe, humanes Nierenzellkarzinomgewebe, humanes Tonsillitisgewebe
Getestete Reaktivität: Human	IF : humanes Kolonkarzinomgewebe, HeLa-Zellen
Zitierte Arten: Human, Maus, Ratte	

Hinweis-IHC: Antigendemaskierung mit TE-Puffer pH 9,0 empfohlen. (*) Wahlweise kann die Antigendemaskierung auch mit Citratpuffer pH 6,0 erfolgen.

Hintergrundinformationen

Keratins are a large family of proteins that form the intermediate filament cytoskeleton of epithelial cells, which are classified into two major sequence types. Type I keratins are a group of acidic intermediate filament proteins, including K9-K23, and the hair keratins Ha1-Ha8. Type II keratins are the basic or neutral counterparts to the acidic type I keratins, including K1-K8, and the hair keratins, Hb1-Hb6. Keratin isoforms demonstrate tissue- and differentiation-specific profiles that make them useful as research biomarkers. Research studies have shown that mutations in keratin genes are associated with skin disorders, liver and pancreatic diseases, and inflammatory intestinal diseases. This antibody is a pan-keratin antibody.

Bemerkenswerte Veröffentlichungen

Verfasser	Pubmed ID	Journal	Anwendung
Yang Wang	34560900	J Exp Clin Cancer Res	WB
Lijun Li	36102310	Int J Oncol	IHC
Yanbo Dong	34778255	Front Cell Dev Biol	IF

Lagerung

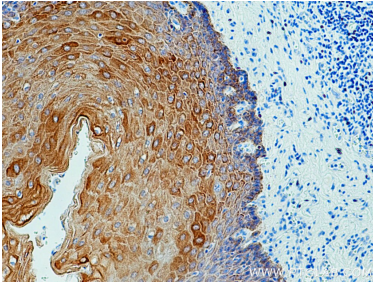
Lagerungsbedingungen:
Bei -20°C lagern. Nach dem Versand ein Jahr lang stabil
Lagerungspuffer:
PBS mit 0.02% Natriumazid und 50% Glycerin pH 7.3.
Aliquotieren ist nicht notwendig bei -20°C Lagerung

*** 20ul-Größen enthalten 0.1% BSA

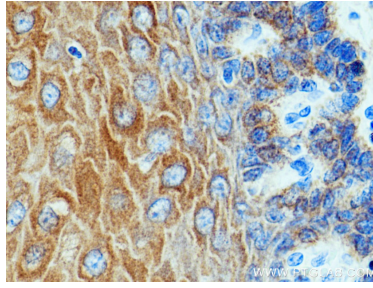
For technical support and original validation data for this product please contact:
T: 1 (888) 4PTGLAB (1-888-478-4522) (toll free in USA), or 1(312) 455-8498 (outside USA)
E: proteintech@ptglab.com
W: ptglab.com

This product is exclusively available under Proteintech Group brand and is not available to purchase from any other manufacturer.

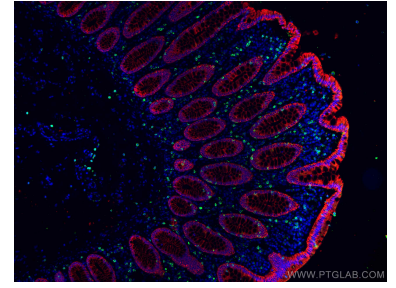
Ausgewählte Validierungsdaten



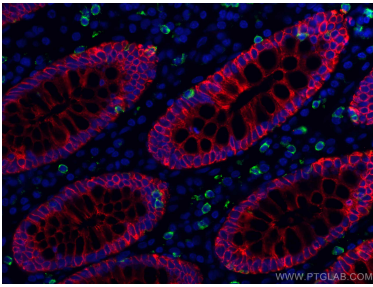
Immunohistochemical analysis of paraffin-embedded human oesophagus tissue slide using 26411-1-AP (pan-keratin antibody) at dilution of 1:3000 (under 10x lens)..



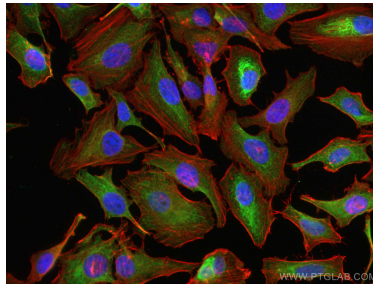
Immunohistochemical analysis of paraffin-embedded human oesophagus tissue slide using 26411-1-AP (pan-keratin antibody) at dilution of 1:3000 (under 40x lens)..



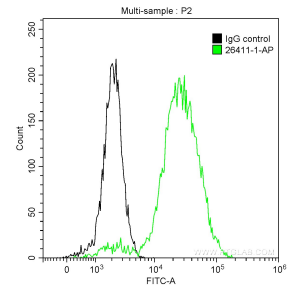
Immunofluorescent analysis of (4% PFA) fixed human colon cancer tissue using pan-keratin antibody (26411-1-AP) at dilution of 1:400 and CoraLite®594-Conjugated AffiniPure Goat Anti-Rabbit IgG(H+L), CD8 antibody (66868-1-Ig, Clone: 1G2B10, green).



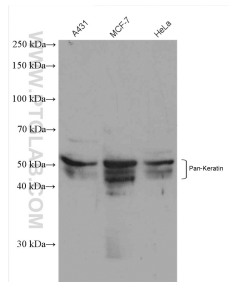
Immunofluorescent analysis of (4% PFA) fixed human colon cancer tissue using pan-keratin antibody (26411-1-AP) at dilution of 1:400 and CoraLite®594-Conjugated AffiniPure Goat Anti-Rabbit IgG(H+L), CD8 antibody (66868-1-Ig, Clone: 1G2B10, green).



Immunofluorescent analysis of (4% PFA) fixed HeLa cells using pan-keratin antibody (26411-1-AP) at dilution of 1:200 and CoraLite®488-Conjugated AffiniPure Goat Anti-Rabbit IgG(H+L).



1X10⁶ A431 cells were intracellularly stained with 0.2 ug Anti-Human pan-keratin (26411-1-AP) and CoraLite®488-Conjugated AffiniPure Goat Anti-Rabbit IgG(H+L) at dilution 1:1000 (green), and 0.2 ug Control Antibody. Cells were fixed with 90% MeOH.



Various lysates were subjected to SDS PAGE followed by western blot with 26411-1-AP (pan-keratin antibody) at dilution of 1:100000 incubated at room temperature for 1.5 hours.