

Nur für Forschungszwecke

# DEPDC7 Polyklonaler Antikörper

Katalog-Nr.:26517-1-AP



## Allgemeine Informationen

Katalog-Nr.:  
26517-1-AP

Größe:  
150ul , Konzentration: 700 µg/ml von  
Nanodrop und 427 µg/ml durch die  
Bradford-Methode mit BSA als  
Standard;

Wirt:  
Kaninchen

Isotyp:  
IgG

Immunogen Katalognummer:  
AG24094

GenBank-Zugangsnummer:  
BC030970

GeneID (NCBI):  
91614

Vollständiger Name:  
DEP domain containing 7

Beobachtete Masse:  
55-60 kDa

Reinigungsmethode:

Antigen-Affinitätsreinigung

Empfohlene Verdünnungen:

WB 1:500-1:2000

IF 1:50-1:500

## Anwendungen

Geprüfte Anwendungen:

IF, WB,ELISA

Getestete Reaktivität:

Human

Positivkontrollen:

WB : HepG2-Zellen, HeLa-Zellen

IF : HepG2-Zellen,

## Hintergrundinformationen

DEPDC7 (DEP domain-containing protein 7), also known as protein TR2/D15, is a 511 amino acid protein belonging to the DEPDC7 family. DEPDC7 contains one DEP domain and is highly expressed in liver, with lower levels in kidney. DEPDC7 exists as two isoforms produced by alternative splicing events. The gene encoding DEPDC7 maps to human chromosome 11p13 and mouse chromosome 2 E2. With approximately 135 million base pairs and 1,400 genes, chromosome 11 makes up around 4% of human genomic DNA and is considered a gene and disease association dense chromosome. DEPDC7 involves the regulation of small GTPase mediated signal transduction.

## Lagerung

Lagerungsbedingungen:

Bei -20°C lagern. Nach dem Versand ein Jahr lang stabil

Lagerungspuffer:

PBS mit 0.02% Natriumazid und 50% Glycerin pH 7.3.

Aliquotieren ist nicht notwendig bei -20°C Lagerung

\*\*\* 20ul-Größen enthalten 0.1% BSA

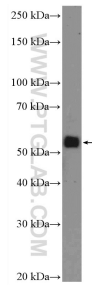
For technical support and original validation data for this product please contact:

T: 1 (888) 4PTGLAB (1-888-478-4522) (toll free  
in USA), or 1(312) 455-8498 (outside USA)

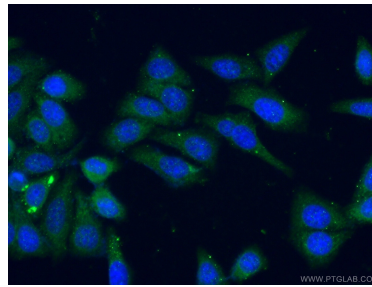
E: [proteintech@ptglab.com](mailto:proteintech@ptglab.com)  
W: [ptglab.com](http://ptglab.com)

This product is exclusively available under Proteintech Group brand and is not available to purchase from any other manufacturer.

## Ausgewählte Validierungsdaten



HepG2 cells were subjected to SDS PAGE followed by western blot with 26517-1-AP (DEPDC7 Antibody) at dilution of 1:1000 incubated at room temperature for 1.5 hours.



Immunofluorescent analysis of (-20°C Ethanol) fixed HepG2 cells using 26517-1-AP (DEPDC7 antibody) at dilution of 1:50 and Alexa Fluor 488-conjugated AffiniPure Goat Anti-Rabbit IgG(H+L).