

Allgemeine Informationen

Katalog-Nr.: 26520-1-AP	GenBank-Zugangsnummer: BC039174	Reinigungsmethode: Antigen-Affinitätsreinigung
Größe: 150ul , Konzentration: 750 µg/ml von Nanodrop;	GeneID (NCBI): 7414	Empfohlene Verdünnungen: WB 1:5000-1:50000 IHC 1:50-1:500 IF 1:300-1:1200
Wirt: Kaninchen	Vollständiger Name: vinculin	
Isotyp: IgG	Berechnete Masse: 1133 aa, 124 kDa	
Immunogen Katalognummer: AG24942	Beobachtete Masse: 117 kDa	

Anwendungen

Geprüfte Anwendungen:

FC, IF, IHC, WB, ELISA

In Publikationen genannte Anwendungen:

IF, WB

Getestete Reaktivität:

Human, Hund, Maus, Ratte

Zitierte Arten:

Hausschwein, Human, Kaninchen, Maus, Ratte

Hinweis-IHC: Antigenmaskierung mit TE-Puffer pH 9,0 empfohlen. (*) Wahlweise kann die Antigenmaskierung auch mit Citratpuffer pH 6,0 erfolgen.

Positivkontrollen:

WB : HEK-293T-Zellen, HeLa-Zellen, HepG2-Zellen, Mausherzgewebe, MDCK-Zellen, NIH/3T3-Zellen, PC-12-Zellen, Rattenherzgewebe, U-87 MG-Zellen

IHC : humanes Skelettmuskelgewebe, humanes Mammakarzinomgewebe, humanes Prostatakarzinomgewebe

IF : HepG2-Zellen,

Hintergrundinformationen

Vinculin belongs to the vinculin/alpha-catenin family. It is an actin filament (F-actin)-binding protein which involved in cell-matrix adhesion and cell-cell adhesion. Vinculin regulates cell-surface E-cadherin expression and potentiates mechanosensing by the E-cadherin complex. It may also play important roles in cell morphology and locomotion. Vinculin is a 117-kDa, 1,066-amino-acid protein which is ubiquitously expressed. Its splice variant, metavinculin (124 kDa), is muscle-specific.

Bemerkenswerte Veröffentlichungen

Verfasser	Pubmed ID	Journal	Anwendung
Lan Zhang	34586738	Clin Transl Med	WB
Zhixiong Chen	30178500	Prostate	WB
Jingxuan Chen	36316321	Cell Death Discov	WB,IF

Lagerung

Lagerungsbedingungen:

Bei -20°C lagern. Nach dem Versand ein Jahr lang stabil

Lagerungspuffer:

PBS mit 0.02% Natriumazid und 50% Glycerin pH 7.3.

Aliquotieren ist nicht notwendig bei -20°C Lagerung

*** 20ul-Größen enthalten 0.1% BSA

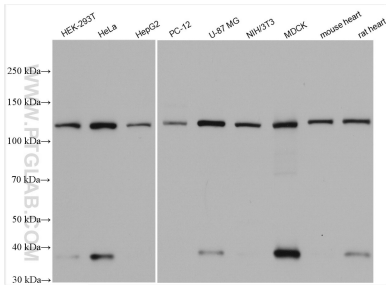
For technical support and original validation data for this product please contact:

T: 1 (888) 4PTGLAB (1-888-478-4522) (toll free in USA), or 1(312) 455-8498 (outside USA)

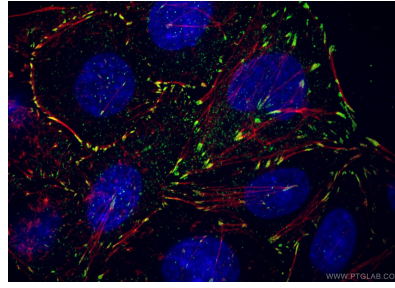
E: proteintech@ptglab.com
W: ptglab.com

This product is exclusively available under Proteintech Group brand and is not available to purchase from any other manufacturer.

Ausgewählte Validierungsdaten



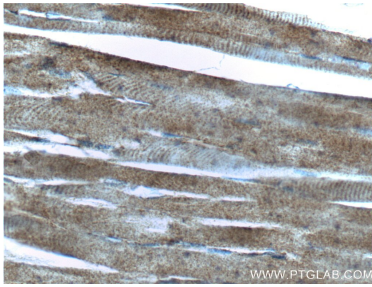
Various lysates were subjected to SDS PAGE followed by western blot with 26520-1-AP (Vinculin antibody) at dilution of 1:30000 incubated at room temperature for 1.5 hours.



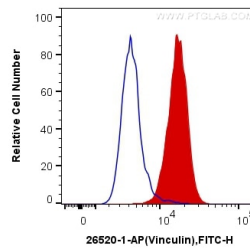
Immunofluorescent analysis of (4% PFA) fixed HepG2 cells using 26520-1-AP (Vinculin antibody) at dilution of 1:600 and CoraLite488-Conjugated AffiniPure Goat Anti-Rabbit IgG(H+L), CL555-phalloidine stains F-actin (red).



Immunohistochemical analysis of paraffin-embedded human skeletal muscle tissue slide using 26520-1-AP (Vinculin Antibody) at dilution of 1:200 (under 10x lens).



Immunohistochemical analysis of paraffin-embedded human skeletal muscle tissue slide using 26520-1-AP (Vinculin Antibody) at dilution of 1:200 (under 40x lens).



1×10^6 HepG2 cells were intracellularly stained with 0.2 μ g Anti-Human Vinculin (26520-1-AP) and CoraLite[®]488-Conjugated AffiniPure Goat Anti-Rabbit IgG(H+L) at dilution 1:1000 (red), or 0.2 μ g Control Antibody. Cells were fixed with 4% PFA and permeabilized with Flow Cytometry Perm Buffer (PF00011-C).