

Nur für Forschungszwecke

# SP3 Polyklonaler Antikörper

Katalog-Nr.:26584-1-AP

3 Publikationen



## Allgemeine Informationen

<b>Katalog-Nr.:</b> 26584-1-AP	<b>GenBank-Zugangsnummer:</b> BC126414	<b>Reinigungsmethode:</b> Antigen-Affinitätsreinigung
<b>Größe:</b> 150ul, Konzentration: 750 µg/ml von Nanodrop und 387 µg/ml durch die Bradford-Methode mit BSA als Standard;	<b>GeneID (NCBI):</b> 6670	<b>Empfohlene Verdünnungen:</b> WB 1:500-1:1000
<b>Wirt:</b> Kaninchen	<b>Vollständiger Name:</b> Sp3 transcription factor	
<b>Isotyp:</b> IgG	<b>Berechnete Masse:</b> 781 aa, 82 kDa	
<b>Immunogen Katalognummer:</b> AG25082	<b>Beobachtete Masse:</b> 70 kDa, 115 kDa	

## Anwendungen

<b>Geprüfte Anwendungen:</b> WB, ELISA	<b>Positivkontrollen:</b> WB: PC-3-Zellen, COLO 320-Zellen
<b>In Publikationen genannte Anwendungen:</b> IHC, WB	
<b>Getestete Reaktivität:</b> Human, Maus	
<b>Zitierte Arten:</b> Human	

## Hintergrundinformationen

SP3, also named as transcription factor Sp3, is a 781 amino acid protein, which contains 3 C2H2-type zinc fingers and belongs to the Sp1 C2H2-type zinc-finger protein family. SP3 localizes to the nuclear periphery and in nuclear dots when sumoylated. Some localization in PML nuclear bodies. SP3 is acetylated by histone acetyltransferase p300, deacetylated by HDACs and sumoylated on all isoforms. Sumoylated on 2 sites in longer isoforms with Lys-551 being the major site. Sumoylation at this site promotes nuclear localization to the nuclear periphery, nuclear dots and PML nuclear bodies. Sumoylation on Lys-551 represses the transactivation activity, except for the largest isoform, L-Sp3, which has little effect on transactivation. Alternate sumoylation and acetylation at Lys-551 also control transcriptional activity. There exists two modified isoform and molecular weight of those are 70 kDa and 115 kDa.

## Bemerkenswerte Veröffentlichungen

Verfasser	Pubmed ID	Journal	Anwendung
Shouhua Zhang	29260353	Dig Dis Sci	WB
Kexin Sun	36889558	Mol Cell Probes	WB, IHC
Weiyi Zhu	36745972	Biochem Biophys Res Commun	WB

## Lagerung

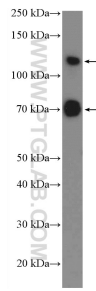
**Lagerungsbedingungen:**  
Bei -20°C lagern. Nach dem Versand ein Jahr lang stabil  
**Lagerungspuffer:**  
PBS mit 0.02% Natriumazid und 50% Glycerin pH 7.3.  
Aliquotieren ist nicht notwendig bei -20°C Lagerung

\*\*\* 20ul-Größen enthalten 0.1% BSA

For technical support and original validation data for this product please contact:  
T: 1 (888) 4PTGLAB (1-888-478-4522) (toll free in USA), or 1(312) 455-8498 (outside USA)  
E: proteintech@ptglab.com  
W: ptglab.com

This product is exclusively available under Proteintech Group brand and is not available to purchase from any other manufacturer.

## Ausgewählte Validierungsdaten



PC-3 cells were subjected to SDS PAGE followed by western blot with 26584-1-AP (SP3 Antibody) at dilution of 1:600 incubated at room temperature for 1.5 hours.