

Nur für Forschungszwecke

# MMP1 Polyklonaler Antikörper

Katalog-Nr.:26585-1-AP

3 Publikationen



## Allgemeine Informationen

Katalog-Nr.:  
26585-1-AP

Größe:  
150ul , Konzentration: 450 µg/ml von  
Nanodrop und 367 µg/ml durch die  
Bradford-Methode mit BSA als  
Standard;

Wirt:  
Kaninchen

Isotyp:  
IgG

Immunogen Katalognummer:  
AG25073

GenBank-Zugangsnummer:  
BC013875

GeneID (NCBI):  
4312

Vollständiger Name:  
matrix metalloproteinase 1  
(interstitial collagenase)

Berechnete Masse:  
54 kDa

Beobachtete Masse:  
62 kDa

Reinigungsmethode:

Antigen-Affinitätsreinigung

Empfohlene Verdünnungen:

WB 1:200-1:1000  
IP 0.5-4.0 ug für IP und 1:200-1:1000  
für WB  
IHC 1:100-1:400

## Anwendungen

Geprüfte Anwendungen:

IHC, IP, WB, ELISA

In Publikationen genannte Anwendungen:

IHC, IP, WB

Getestete Reaktivität:

Human, Maus

Zitierte Arten:

Human, Maus

**Hinweis-IHC: Antigendemaskierung mit TE-Puffer pH 9,0 empfohlen. (\*) Wahlweise kann die Antigendemaskierung auch mit Citratpuffer pH 6,0 erfolgen.**

Positivkontrollen:

WB : A375-Zellen, NIH/3T3-Zellen

IP : Raji-Zellen,

IHC : humanes Zervixkarzinomgewebe, humanes Leberkarzinomgewebe

## Hintergrundinformationen

MMP1, also named as CLG, belongs to the peptidase M10A family. MMP is the main enzyme that cleaves fibrillar collagen, namely types I, II, III, VII, and X. It is involved in cell migration and invasion, and is frequently up-regulated in cancer cells. It can be cleavage to two major forms (22 kDa and 27 kDa) by undergoing autolytic, and the minor form (25 kDa) is the glycosylated form of the 22 kDa form. The 27 kDa form has no activity while the 22/25 kDa form can act as activator for collagenase. The sizes of pro-MMP-1 and active MMP-1 from human synovial fibroblasts have been reported as 52 to 56 kDa, depending on glycosylation, and 41 to 45 kDa, respectively. In addition, a band of 62-kDa observed in the current study is pro-MMP-1 (PMID:9418730).

## Bemerkenswerte Veröffentlichungen

Verfasser	Pubmed ID	Journal	Anwendung
Haiquan Zhu	34093648	Front Genet	WB
Li Zeng	28447732	Mol Med Rep	
Yihui Zhu	35254603	Breast Cancer Res Treat	WB, IHC, IP

## Lagerung

Lagerungsbedingungen:

Bei -20°C lagern. Nach dem Versand ein Jahr lang stabil

Lagerungspuffer:

PBS mit 0.02% Natriumazid und 50% Glycerin pH 7.3.

Aliquotieren ist nicht notwendig bei -20°C Lagerung

\*\*\* 20ul-Größen enthalten 0.1% BSA

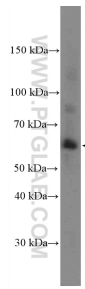
For technical support and original validation data for this product please contact:

T: 1 (888) 4PTGLAB (1-888-478-4522) (toll free in USA), or 1(312) 455-8498 (outside USA)

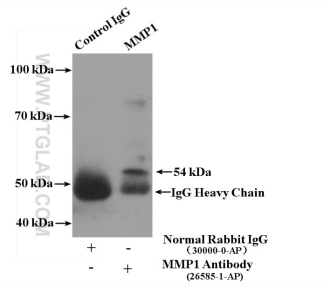
E: proteintech@ptglab.com  
W: ptglab.com

This product is exclusively available under Proteintech Group brand and is not available to purchase from any other manufacturer.

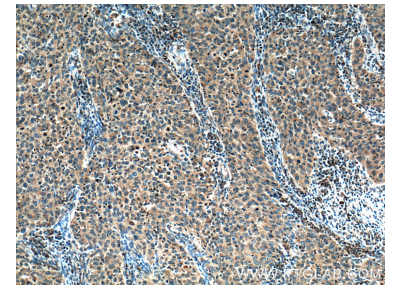
## Ausgewählte Validierungsdaten



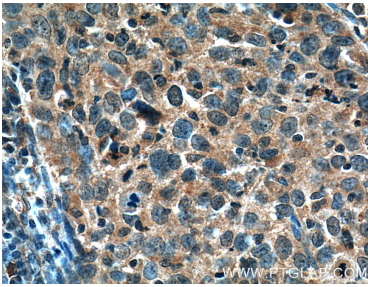
A375 cells were subjected to SDS PAGE followed by western blot with 26585-1-AP (MMP1 Antibody) at dilution of 1:300 incubated at room temperature for 1.5 hours.



IP Result of anti-MMP1 (IP:26585-1-AP, 4ug; Detection:26585-1-AP 1:300) with Raji cells lysate 4000ug.



Immunohistochemical analysis of paraffin-embedded human cervical cancer tissue slide using 26585-1-AP (MMP1 Antibody) at dilution of 1:200 (under 10x lens). Heat mediated antigen retrieval with Tris-EDTA buffer (pH 9.0).



Immunohistochemical analysis of paraffin-embedded human cervical cancer tissue slide using 26585-1-AP (MMP1 Antibody) at dilution of 1:200 (under 40x lens). Heat mediated antigen retrieval with Tris-EDTA buffer (pH 9.0).