

Nur für Forschungszwecke

# KCC4/SLC12A7 Polyklonaler Antikörper

Katalog-Nr.: 26590-1-AP



## Allgemeine Informationen

<b>Katalog-Nr.:</b> 26590-1-AP	<b>GenBank-Zugangsnummer:</b> BC098390	<b>Reinigungsmethode:</b> Antigen-Affinitätsreinigung
<b>Größe:</b> 150ul, Konzentration: 900 µg/ml von Nanodrop;	<b>GenID (NCBI):</b> 10723	<b>Empfohlene Verdünnungen:</b> WB 1:2000-1:10000
<b>Wirt:</b> Kaninchen	<b>Vollständiger Name:</b> solute carrier family 12 (potassium/chloride transporters), member 7	
<b>Isotyp:</b> IgG	<b>Beobachtete Masse:</b> 119 kDa	
<b>Immunogen Katalognummer:</b> AG24954		

## Anwendungen

<b>Geprüfte Anwendungen:</b> WB, ELISA	<b>Positivkontrollen:</b> WB: BGC-823-Zellen, NCI-H1299-Zellen, Raji-Zellen, SH-SY5Y-Zellen
<b>Getestete Reaktivität:</b> Human	

## Hintergrundinformationen

KCC4, also named as Solute carrier family 12 member 7 (SLC12A7), is a 1083 amino-acid protein, which belongs to the SLC12A transporter family. As a multi-pass membrane protein, the molecular weight of KCC4 is 119 kDa. KCC4 mediates electroneutral potassium-chloride cotransport when activated by cell swelling. Moreover, KCC4 may mediate K<sup>+</sup> uptake into Deiters' cells in the cochlea and contribute to K<sup>+</sup> recycling in the inner ear. KCC4 is important for the survival of cochlear outer and inner hair cells and the maintenance of the organ of Corti (Uniprot, GeneID:10723).

## Lagerung

**Lagerungsbedingungen:**  
Bei -20°C lagern. Nach dem Versand ein Jahr lang stabil  
**Lagerungspuffer:**  
PBS mit 0.02% Natriumazid und 50% Glycerin pH 7.3.  
Aliquotieren ist nicht notwendig bei -20°C Lagerung

**\*\*\* 20ul-Größen enthalten 0.1% BSA**

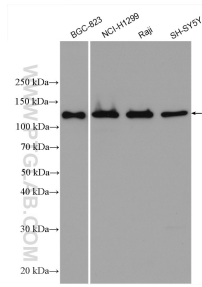
For technical support and original validation data for this product please contact:

T: 1 (888) 4PTGLAB (1-888-478-4522) (toll free  
in USA), or 1(312) 455-8498 (outside USA)

E: [proteintech@ptglab.com](mailto:proteintech@ptglab.com)  
W: [ptglab.com](http://ptglab.com)

**This product is exclusively available under Proteintech Group brand and is not available to purchase from any other manufacturer.**

## Ausgewählte Validierungsdaten



Various lysates were subjected to SDS PAGE followed by western blot with 26590-1-AP (KCC4/SLC12A7 antibody) at dilution of 1:5000 incubated at room temperature for 1.5 hours.