

## Allgemeine Informationen

<b>Katalog-Nr.:</b> 26593-1-AP	<b>GenBank-Zugangsnummer:</b> NM-009741	<b>Reinigungsmethode:</b> Antigen-Affinitätsreinigung
<b>Größe:</b> 150ul , Konzentration: 400 µg/ml von Nanodrop;	<b>GeneID (NCBI):</b> 12043	<b>Empfohlene Verdünnungen:</b> WB 1:1000-1:4000 IHC 1:200-1:800 IF 1:50-1:500
<b>Wirt:</b> Kaninchen	<b>Vollständiger Name:</b> B-cell leukemia/lymphoma 2	
<b>Isotyp:</b> IgG	<b>Berechnete Masse:</b> 26 kDa	
<b>Immunogen Katalognummer:</b> AG24260	<b>Beobachtete Masse:</b> 26 kDa	

## Anwendungen

## Geprüfte Anwendungen:

IF, IHC, WB, ELISA

## In Publikationen genannte Anwendungen:

IF, WB

## Getestete Reaktivität:

Human, Maus, Ratte

## Zitierte Arten:

Hamster, Hausschwein, Huhn, Hund, Maus, Ratte

**Hinweis-IHC: Antigenmaskierung mit TE-Puffer pH 9,0 empfohlen. (\*) Wahlweise kann die Antigenmaskierung auch mit Citratpuffer pH 6,0 erfolgen.**

## Positivkontrollen:

**WB** : HL-60-Zellen, C2C12-Zellen, Jurkat-Zellen, Mausherzgewebe, Maushirngewebe, Maushodengewebe, Mausmilzgewebe, Mausnierengewebe, NIH/3T3-Zellen, NIH3T3-Zellen, Rattenmilzgewebe, THP-1-Zellen

**IHC** : humanes Tonsillitgewebe, Maushirngewebe, Mausmilzgewebe

**IF** : NIH/3T3-Zellen,

## Hintergrundinformationen

Bcl2 is a member of the B cell lymphoma 2 protein family. Members of this family regulate cell death in multiple cell types and can have either proapoptotic or antiapoptotic activities. The protein encoded by this gene inhibits mitochondrial-mediated apoptosis. This protein is an integral outer mitochondrial membrane protein that functions as part of signaling pathway that controls mitochondrial permeability in response to apoptotic stimuli. This protein may also play a role in neuron cell survival and autophagy. Abnormal expression and chromosomal translocations of this gene are associated with cancer progression in numerous tissues.

## Bemerkenswerte Veröffentlichungen

Verfasser	Pubmed ID	Journal	Anwendung
Xiao-Feng Zhu	36180975	Phytother Res	WB
Qian Wang	32999044	Mol Cancer Ther	WB
Siqing Ma	34658905	Front Physiol	WB

## Lagerung

## Lagerungsbedingungen:

Bei -20°C lagern. Nach dem Versand ein Jahr lang stabil

## Lagerungspuffer:

PBS mit 0.02% Natriumazid und 50% Glycerin pH 7.3.

Aliquotieren ist nicht notwendig bei -20°C Lagerung

\*\*\* 20ul-Größen enthalten 0.1% BSA

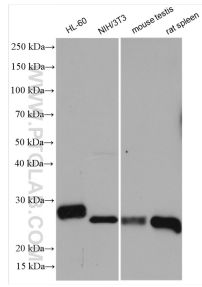
For technical support and original validation data for this product please contact:

T: 1 (888) 4PTGLAB (1-888-478-4522) (toll free in USA), or 1(312) 455-8498 (outside USA)

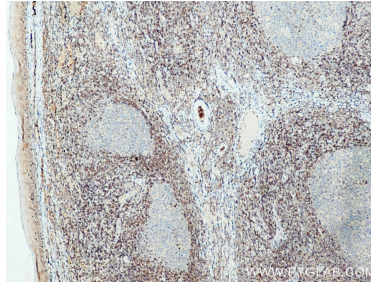
E: [proteintech@ptglab.com](mailto:proteintech@ptglab.com)  
W: [ptglab.com](http://ptglab.com)

**This product is exclusively available under Proteintech Group brand and is not available to purchase from any other manufacturer.**

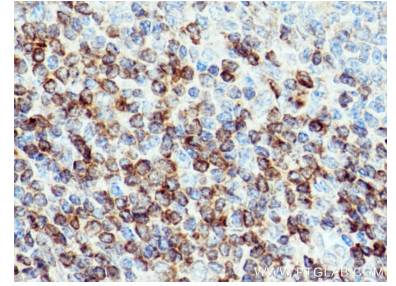
## Ausgewählte Validierungsdaten



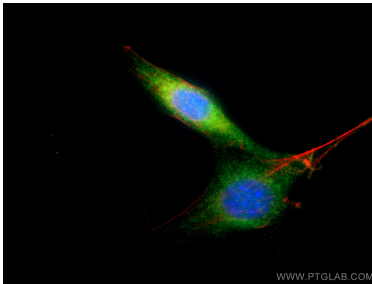
Various lysates were subjected to SDS PAGE followed by western blot with 26593-1-AP (Bcl2 antibody) at dilution of 1:2000 incubated at room temperature for 1.5 hours.



Immunohistochemical analysis of paraffin-embedded human tonsillitis tissue slide using 26593-1-AP (Bcl2 antibody) at dilution of 1:400 (under 4x lens). Heat mediated antigen retrieval with Tris-EDTA buffer (pH 9.0).



Immunohistochemical analysis of paraffin-embedded human tonsillitis tissue slide using 26593-1-AP (Bcl2 antibody) at dilution of 1:400 (under 40x lens). Heat mediated antigen retrieval with Tris-EDTA buffer (pH 9.0).



Immunofluorescent analysis of (4% PFA) fixed NIH/3T3 cells using Bcl2 antibody (26593-1-AP) at dilution of 1:200 and CoraLite@488-Conjugated AffiniPure Goat Anti-Rabbit IgG(H+L), CL594-Phalloidin (red).