

Nur für Forschungszwecke

# SLC17A9 Polyklonaler Antikörper

Katalog-Nr.:26731-1-AP

Vorgestelltes Produkt

1 Publikationen



## Allgemeine Informationen

|   |  |  |
|---|--|--|
| <b>Katalog-Nr.:</b><br>26731-1-AP                               | <b>GenBank-Zugangsnummer:</b><br>BC025312                        | <b>Reinigungsmethode:</b><br>Antigen-Affinitätsreinigung   |
| <b>Größe:</b><br>150ul , Konzentration: 700 µg/ml von Nanodrop; | <b>GeneID (NCBI):</b><br>63910                                   | <b>Empfohlene Verdünnungen:</b><br>WB 1:500-1:2000<br>IP 0.5-4.0 ug für IP und 1:500-1:2000 für WB |
| <b>Wirt:</b><br>Kaninchen                                       | <b>Vollständiger Name:</b><br>solute carrier family 17, member 9 | <b>IHC 1:50-1:500</b><br><b>IF 1:50-1:500</b>  |
| <b>Isotyp:</b><br>IgG   | <b>Berechnete Masse:</b><br>436 aa, 47 kDa                       |  |
| <b>Immunogen Katalognummer:</b><br>AG24970                      | <b>Beobachtete Masse:</b><br>68-70 kDa                           |  |

## Anwendungen

|   |  |
|---|--|
| <b>Geprüfte Anwendungen:</b><br>IF, IHC, IP, WB, ELISA  | <b>Positivkontrollen:</b>  |
| <b>In Publikationen genannte Anwendungen:</b><br>IHC, WB  | <b>WB :</b> fetales humanes Hirngewebe, C2C12-Zellen, Maushirngewebe, Rattenhirngewebe |
| <b>Getestete Reaktivität:</b><br>Human, Maus  | <b>IP :</b> Maushirngewebe,  |
| <b>Zitierte Arten:</b><br>Human   | <b>IHC :</b> humanes Hautgewebe,   |
| <b>Hinweis-IHC: Antigenmaskierung mit TE-Puffer pH 9,0 empfohlen. (*) Wahlweise kann die Antigenmaskierung auch mit Citratpuffer pH 6,0 erfolgen.</b> | <b>IF :</b> humanes Pankreasgewebe,  |

## Hintergrundinformationen

### Bemerkenswerte Veröffentlichungen

| Verfasser  | Pubmed ID | Journal  | Anwendung |
|------------|-----------|----------|-----------|
| Weiquan Li | 36590170  | iScience | IHC,WB    |

## Lagerung

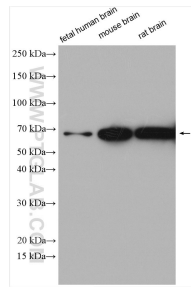
**Lagerungsbedingungen:**  
Bei -20°C lagern. Nach dem Versand ein Jahr lang stabil  
**Lagerungspuffer:**  
PBS mit 0.02% Natriumazid und 50% Glycerin pH 7.3.  
Aliquotieren ist nicht notwendig bei -20°C Lagerung

\*\*\* 20ul-Größen enthalten 0.1% BSA

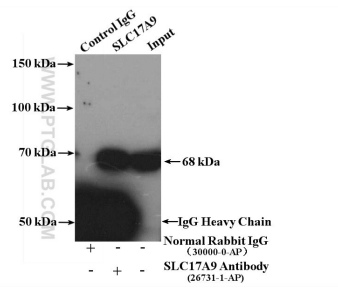
For technical support and original validation data for this product please contact:  
T: 1 (888) 4PTGLAB (1-888-478-4522) (toll free in USA), or 1(312) 455-8498 (outside USA)  
E: proteintech@ptglab.com  
W: ptglab.com

This product is exclusively available under Proteintech Group brand and is not available to purchase from any other manufacturer.

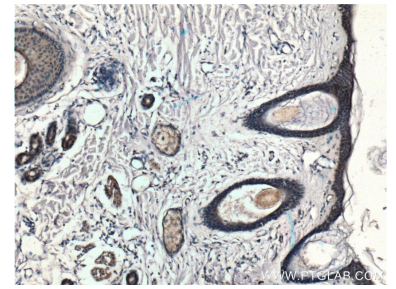
## Ausgewählte Validierungsdaten



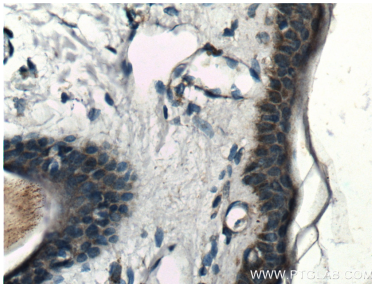
Various lysates were subjected to SDS PAGE followed by western blot with 26731-1-AP (SLC17A9 antibody) at dilution of 1:1000 incubated at room temperature for 1.5 hours.



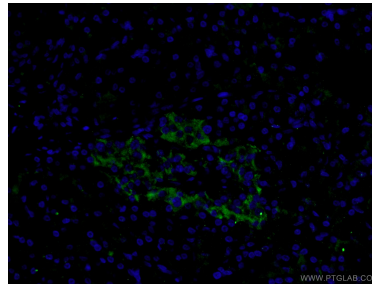
IP Result of anti-SLC17A9 (IP:26731-1-AP, 4ug; Detection:26731-1-AP 1:1000) with mouse brain tissue lysate 4400ug.



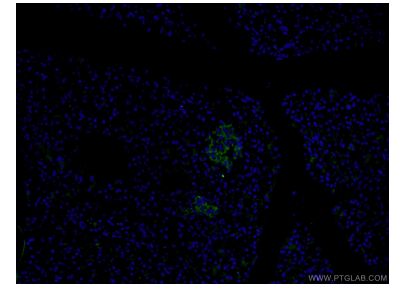
Immunohistochemical analysis of paraffin-embedded human skin tissue slide using 26731-1-AP (SLC17A9 Antibody) at dilution of 1:200 (under 10x lens).



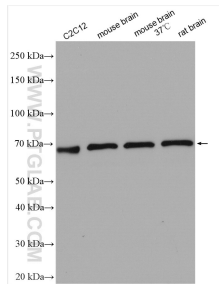
Immunohistochemical analysis of paraffin-embedded human skin tissue slide using 26731-1-AP (SLC17A9 Antibody) at dilution of 1:200 (under 40x lens).



Immunofluorescent analysis of (4% PFA) fixed human pancreas tissue using 26731-1-AP (SLC17A9 antibody) at dilution of 1:100 and Alexa Fluor 488-Conjugated AffiniPure Goat Anti-Rabbit IgG(H+L).



Immunofluorescent analysis of (4% PFA) fixed human pancreas tissue using 26731-1-AP (SLC17A9 antibody) at dilution of 1:100 and Alexa Fluor 488-Conjugated AffiniPure Goat Anti-Rabbit IgG(H+L).



Various lysates were subjected to SDS PAGE followed by western blot with 26731-1-AP (SLC17A9 antibody) at dilution of 1:1500 incubated at room temperature for 1.5 hours.