

Nur für Forschungszwecke

Cyclin D3 Polyklonaler Antikörper

Katalog-Nr.:26755-1-AP

Vorgestelltes Produkt

25 Publikationen



Allgemeine Informationen

Katalog-Nr.:
26755-1-AP

Größe:

150ul, Konzentration: 1000 µg/ml von 896
Nanodrop und 500 µg/ml durch die
Bradford-Methode mit BSA als
Standard;

Wirt:

Kaninchen

Isotyp:

IgG

Immunogen Katalognummer:
AG25151

GenBank-Zugangsnummer:

BC011616

GeneID (NCBI):

Vollständiger Name:
cyclin D3

Berechnete Masse:

33 kDa

Beobachtete Masse:

33 kDa

Reinigungsmethode:

Antigen-Affinitätsreinigung

Empfohlene Verdünnungen:

WB 1:500-1:2000

IP 0.5-4.0 µg für IP und 1:500-1:2000
für WB

IHC 1:50-1:500

IF 1:50-1:500

Anwendungen

Geprüfte Anwendungen:

IF, IHC, IP, WB, ELISA

In Publikationen genannte Anwendungen:

IHC, IP, WB

Getestete Reaktivität:

Human, Ratte

Zitierte Arten:

Human, Maus, Ratte

**Hinweis-IHC: Antigendemaskierung mit TE-
Puffer pH 9,0 empfohlen. (*) Wahlweise
kann die Antigendemaskierung auch mit
Citratpuffer pH 6,0 erfolgen.**

Positivkontrollen:

WB : C6-Zellen, HeLa-Zellen, Jurkat-Zellen, K-562-
Zellen

IP : K-562-Zellen,

IHC : humanes Pankreasgewebe, Rattennierengewebe

IF : HeLa-Zellen,

Hintergrundinformationen

Cyclin D3 belongs to the highly conserved cyclin family, whose members are characterized by a dramatic periodicity in protein abundance through the cell cycle. Cyclins function as regulators of CDK kinases. Different cyclins exhibit distinct expression and degradation patterns which contribute to the temporal coordination of each mitotic event. This cyclin forms a complex with and functions as a regulatory subunit of CDK4 or CDK6, whose activity is required for cell cycle G1/S transition. This protein has been shown to interact with and be involved in the phosphorylation of tumor suppressor protein Rb. The CDK4 activity associated with this cyclin was reported to be necessary for cell cycle progression through G2 phase into mitosis after UV radiation.

Bemerkenswerte Veröffentlichungen

Verfasser	Pubmed ID	Journal	Anwendung
Alireza Delfarah	34637314	J Proteome Res	WB
Li Ma	33045308	Mol Cell Endocrinol	WB
Weijing He	33209975	Mol Ther Oncolytics	WB

Lagerung

Lagerungsbedingungen:

Bei -20°C lagern. Nach dem Versand ein Jahr lang stabil

Lagerungspuffer:

PBS mit 0.02% Natriumazid und 50% Glycerin pH 7.3.

Aliquotieren ist nicht notwendig bei -20°C Lagerung

*** 20ul-Größen enthalten 0.1% BSA

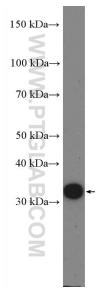
For technical support and original validation data for this product please contact:

T: 1 (888) 4PTGLAB (1-888-478-4522) (toll free
in USA), or 1(312) 455-8498 (outside USA)

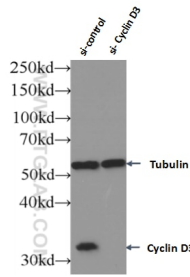
E: proteintech@ptglab.com
W: ptglab.com

This product is exclusively available under Proteintech Group brand and is not available to purchase from any other manufacturer.

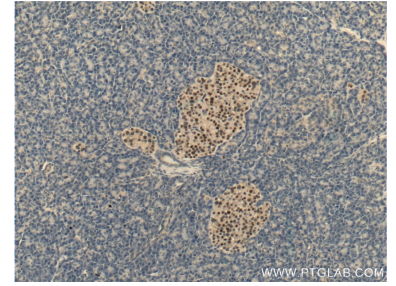
Ausgewählte Validierungsdaten



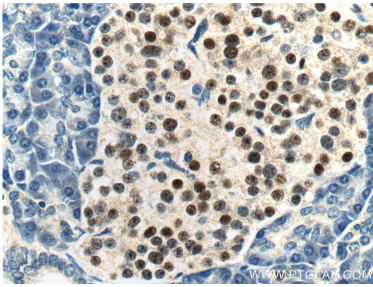
C6 cells were subjected to SDS PAGE followed by western blot with 26755-1-AP (Cyclin D3 Antibody) at dilution of 1:1000 incubated at room temperature for 1.5 hours.



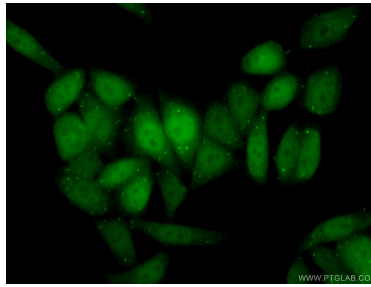
WB result of Cyclin D3 antibody (26755-1-AP; 1:10000; incubated at room temperature for 1.5 hours) with sh-Control and sh-Cyclin D3 transfected Jurkat cells.



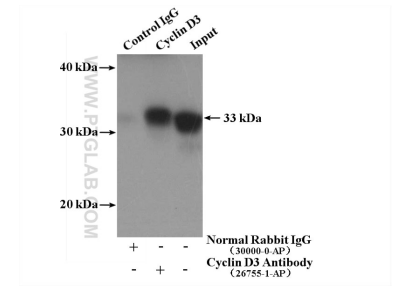
Immunohistochemical analysis of paraffin-embedded human pancreas tissue slide using 26755-1-AP (Cyclin D3 Antibody) at dilution of 1:200 (under 10x lens).



Immunohistochemical analysis of paraffin-embedded human pancreas tissue slide using 26755-1-AP (Cyclin D3 Antibody) at dilution of 1:200 (under 40x lens).



Immunofluorescent analysis of (10% Formaldehyde) fixed HeLa cells using 26755-1-AP (Cyclin D3 antibody) at dilution of 1:50 and Alexa Fluor 488-conjugated AffiniPure Goat Anti-Rabbit IgG(H+L).



IP Result of anti-Cyclin D3 (IP:26755-1-AP, 4ug; Detection:26755-1-AP 1:1000) with K-562 cells lysate 2800ug.