

Allgemeine Informationen

Katalog-Nr.: 26768-1-AP	GenBank-Zugangsnummer: BC060513	Reinigungsmethode: Antigen-Affinitätsreinigung
Größe: 150ul , Konzentration: 650 µg/ml von Nanodrop und 367 µg/ml durch die Bradford-Methode mit BSA als Standard;	GeneID (NCBI): 5340	Empfohlene Verdünnungen: WB 1:5000-1:20000 IHC 1:200-1:800
Wirt: Kaninchen	Vollständiger Name: plasminogen	
Isotyp: IgG	Berechnete Masse: 810 aa, 91 kDa	
Immunogen Katalognummer: AG25243	Beobachtete Masse: 91 kDa	

Anwendungen

Geprüfte Anwendungen: IHC, WB,ELISA	Positivkontrollen: WB : humanes Plasmagewebe, Raji-Zellen IHC : humanes Leberkarzinomgewebe,
Getestete Reaktivität: Human	
Hinweis-IHC: Antigendemaskierung mit TE-Puffer pH 9,0 empfohlen. (*) Wahlweise kann die Antigendemaskierung auch mit Citratpuffer pH 6,0 erfolgen.	

Hintergrundinformationen

Plasminogen is a secreted blood zymogen that is activated by proteolysis and converted to plasmin and angiostatin. Plasminogen plays an important role in fibrinolysis as well as wound healing, cell migration, tissue modeling and angiogenesis. Plasminogen is synthesized in the liver, and it circulates in the blood, with a half-life of 2.2 days. Plasminogen is the precursor of plasmin, which lyses fibrin clots to fibrin degradation products (FDP) and D-dimer; the conversion to active protease is mediated by tissue-type (tPA) and urokinase-type (uPA) plasminogen activators. Defects in plasminogen are likely a cause of thrombophilia and ligneous conjunctivitis.

Lagerung

Lagerungsbedingungen:
Bei -20°C lagern. Nach dem Versand ein Jahr lang stabil
Lagerungspuffer:
PBS mit 0.02% Natriumazid und 50% Glycerin pH 7.3.
Aliquotieren ist nicht notwendig bei -20°C Lagerung

*** 20ul-Größen enthalten 0.1% BSA

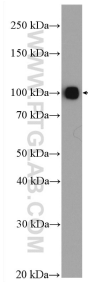
For technical support and original validation data for this product please contact:

T: 1 (888) 4PTGLAB (1-888-478-4522) (toll free
in USA), or 1(312) 455-8498 (outside USA)

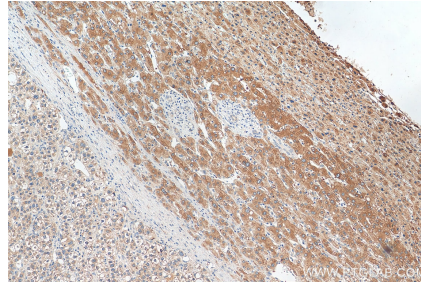
E: proteintech@ptglab.com
W: ptglab.com

This product is exclusively available under Proteintech Group brand and is not available to purchase from any other manufacturer.

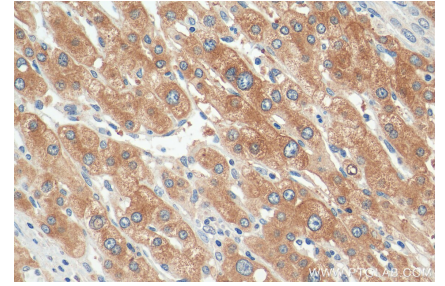
Ausgewählte Validierungsdaten



human plasma were subjected to SDS PAGE followed by western blot with 26768-1-AP (Plasminogen antibody) at dilution of 1:10000 incubated at room temperature for 1.5 hours.



Immunohistochemical analysis of paraffin-embedded human liver cancer tissue slide using 26768-1-AP (Plasminogen antibody) at dilution of 1:400 (under 10x lens). Heat mediated antigen retrieval with Tris-EDTA buffer (pH 9.0).



Immunohistochemical analysis of paraffin-embedded human liver cancer tissue slide using 26768-1-AP (Plasminogen antibody) at dilution of 1:400 (under 40x lens). Heat mediated antigen retrieval with Tris-EDTA buffer (pH 9.0).