

Nur für Forschungszwecke

# SLC25A12 Polyklonaler Antikörper

Katalog-Nr.:26804-1-AP



## Allgemeine Informationen

Katalog-Nr.:  
26804-1-AP

Größe:  
150ul, Konzentration: 260 µg/ml von  
Nanodrop und 200 µg/ml durch die  
Bradford-Methode mit BSA als  
Standard;

Wirt:  
Kaninchen

Isotyp:  
IgG

Immunogen Katalognummer:  
AG25150

GenBank-Zugangsnummer:  
BC016932

GeneID (NCBI):  
8604

Vollständiger Name:  
solute carrier family 25  
(mitochondrial carrier, Aralar),  
member 12

Berechnete Masse:  
75 kDa, 63 kDa

Beobachtete Masse:  
63 kDa

Reinigungsmethode:

Antigen-Affinitätsreinigung

Empfohlene Verdünnungen:

WB 1:1000-1:4000

IHC 1:50-1:500

IF 1:50-1:500

## Anwendungen

Geprüfte Anwendungen:

IF, IHC, WB, ELISA

Getestete Reaktivität:

Human, Maus

**Hinweis-IHC: Antigendemaskierung mit TE-  
Puffer pH 9,0 empfohlen. (\*) Wahlweise  
kann die Antigendemaskierung auch mit  
Citratpuffer pH 6,0 erfolgen.**

Positivkontrollen:

WB: Mausherzgewebe, Mausnierengewebe, Maus-  
Skelettmuskelgewebe, Rattenherzgewebe

IHC: humanes Mammakarzinomgewebe, humanes  
Magenkrebsgewebe, humanes  
Pankreaskarzinomgewebe, Mausnierengewebe

IF: Mausherzgewebe,

## Hintergrundinformationen

### Lagerung

Lagerungsbedingungen:

Bei -20°C lagern. Nach dem Versand ein Jahr lang stabil

Lagerungspuffer:

PBS mit 0.02% Natriumazid und 50% Glycerin pH 7.3.

Aliquotieren ist nicht notwendig bei -20°C Lagerung

\*\*\* 20ul-Größen enthalten 0.1% BSA

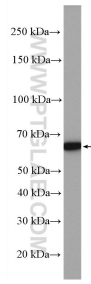
For technical support and original validation data for this product please contact:

T: 1 (888) 4PTGLAB (1-888-478-4522) (toll free  
in USA), or 1(312) 455-8498 (outside USA)

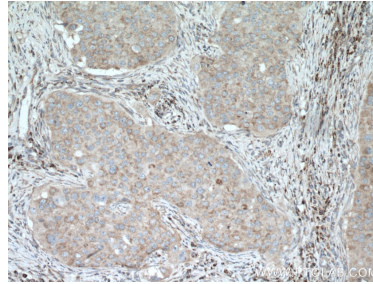
E: proteintech@ptglab.com  
W: ptglab.com

This product is exclusively available under Proteintech  
Group brand and is not available to purchase from any  
other manufacturer.

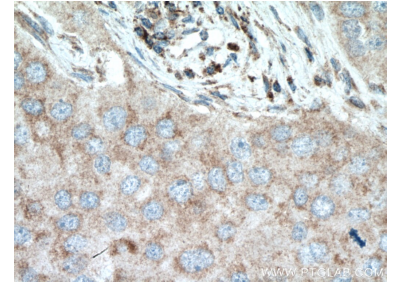
## Ausgewählte Validierungsdaten



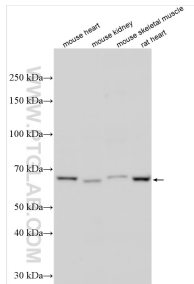
mouse skeletal muscle tissue were subjected to SDS PAGE followed by western blot with 26804-1-AP (SLC25A12 antibody) at dilution of 1:1000 incubated at room temperature for 1.5 hours.



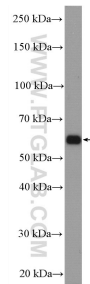
Immunohistochemical analysis of paraffin-embedded human breast cancer tissue slide using 26804-1-AP (SLC25A12 antibody) at dilution of 1:200 (under 10x lens. Heat mediated antigen retrieval with Tris-EDTA buffer (pH 9.0).



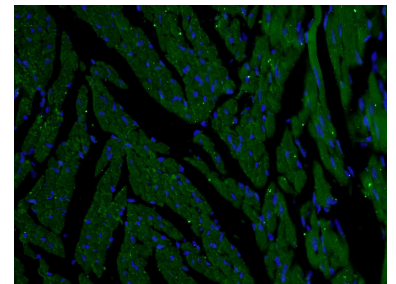
Immunohistochemical analysis of paraffin-embedded human breast cancer tissue slide using 26804-1-AP (SLC25A12 antibody) at dilution of 1:200 (under 40x lens. Heat mediated antigen retrieval with Tris-EDTA buffer (pH 9.0).



Various lysates were subjected to SDS PAGE followed by western blot with 26804-1-AP (SLC25A12 antibody) at dilution of 1:2000 incubated at room temperature for 1.5 hours.



mouse kidney tissue were subjected to SDS PAGE followed by western blot with 26804-1-AP (SLC25A12 antibody) at dilution of 1:1000 incubated at room temperature for 1.5 hours.



Immunofluorescent analysis of (4% PFA) fixed tissue using 26804-1-AP (SLC25A12 antibody) at dilution of 1:50 and Alexa Fluor 488-conjugated AffiniPure Goat Anti-Rabbit IgG(H+L).