

Nur für Forschungszwecke

CDK12/CRKRS Polyklonaler Antikörper



Katalog-Nr.: 26816-1-AP

Vorgestelltes Produkt

4 Publikationen

Allgemeine Informationen

Katalog-Nr.: 26816-1-AP	GenBank-Zugangsnummer: BC150265	Reinigungsmethode: Antigen-Affinitätsreinigung
Größe: 150ul, Konzentration: 1200 µg/ml von 51755 Nanodrop;	GeneID (NCBI): 51755	Empfohlene Verdünnungen: WB 1:2000-1:16000 IF 1:50-1:500
Wirt: Kaninchen	Vollständiger Name: Cdc2-related kinase, arginine/serine-rich	
Isotyp: IgG	Berechnete Masse: 1490 aa, 164 kDa	
Immunogen Katalognummer: AG25323	Beobachtete Masse: 180-200 kDa	

Anwendungen

Geprüfte Anwendungen: IF, WB, ELISA	Positivkontrollen: WB: HeLa-Zellen, Jurkat-Zellen, K-562-Zellen IF: HeLa-Zellen,
In Publikationen genannte Anwendungen: WB	
Getestete Reaktivität: Human	
Zitierte Arten: Human	

Hintergrundinformationen

CRKRS (Cdc2-related kinase, Arg/Ser), also named as cyclin-dependent kinase 12 (CKD12), belongs to CDC2/CDKX subfamily. CDK12 can form a heterodimeric complex with its activating partner, cyclin K, to regulate important cellular physiological processes that include transcriptional regulation, regulation of DNA damage repair genes such as BRCA1 and ATM, suppression of intronic polyadenylation, and susceptibility to PARP inhibitors (PMID: 30487607, 24240700, 31694772). CDK12 has 3 isoforms with the calculated molecular mass of 164/163/141 kDa, and the apparent molecular mass of 180-200 kDa due to some modifications (PMID 11683387, 22988298).

Bemerkenswerte Veröffentlichungen

Verfasser	Pubmed ID	Journal	Anwendung
Yan Liang	34686673	Cell Death Discov	WB
Hui Li	33429148	Eur J Cancer	WB
Mareike Polenkowski	36590164	iScience	WB

Lagerung

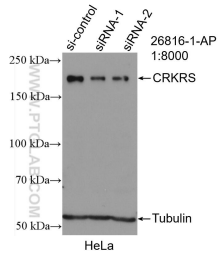
Lagerungsbedingungen:
Bei -20°C lagern. Nach dem Versand ein Jahr lang stabil
Lagerungspuffer:
PBS mit 0.02% Natriumazid und 50% Glycerin pH 7.3.
Aliquotieren ist nicht notwendig bei -20°C Lagerung

*** 20ul-Größen enthalten 0.1% BSA

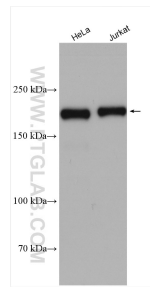
For technical support and original validation data for this product please contact:
T: 1 (888) 4PTGLAB (1-888-478-4522) (toll free in USA), or 1(312) 455-8498 (outside USA)
E: proteintech@ptglab.com
W: ptglab.com

This product is exclusively available under Proteintech Group brand and is not available to purchase from any other manufacturer.

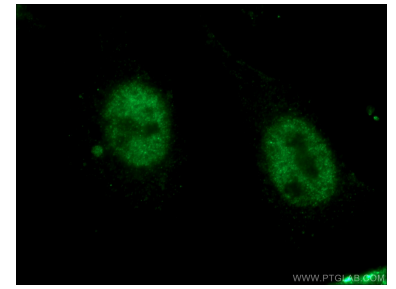
Ausgewählte Validierungsdaten



WB result of CDK12/CRKRS antibody (26816-1-AP; 1:8000; incubated at room temperature for 1.5 hours) with sh-Control and sh-CDK12/CRKRS transfected HeLa cells.



Various lysates were subjected to SDS PAGE followed by western blot with 26816-1-AP (CDK12/CRKRS antibody) at dilution of 1:8000 incubated at room temperature for 1.5 hours.



Immunofluorescent analysis of (10% Formaldehyde) fixed HeLa cells using 26816-1-AP (CRKRS antibody) at dilution of 1:50 and Alexa Fluor 488-conjugated AffiniPure Goat Anti-Rabbit IgG(H+L).