

## Allgemeine Informationen

Katalog-Nr.:  
26830-1-AP

Größe:  
150ul, Konzentration: 750 µg/ml von  
Nanodrop und 400 µg/ml durch die  
Bradford-Methode mit BSA als  
Standard;

Wirt:  
Kaninchen

Isotyp:  
IgG

Immunogen Katalognummer:  
AG25285

GenBank-Zugangsnummer:  
BC001136

GeneID (NCBI):  
59338

Vollständiger Name:  
pleckstrin homology domain  
containing, family A  
(phosphoinositide binding specific)  
member 1

Berechnete Masse:  
46 kDa

Beobachtete Masse:  
46 kDa

Reinigungsmethode:

Antigen-Affinitätsreinigung

Empfohlene Verdünnungen:

WB 1:500-1:2000  
IP 0.5-4.0 µg für IP und 1:500-1:2000  
für WB  
IHC 1:50-1:500  
IF 1:50-1:500

## Anwendungen

Geprüfte Anwendungen:

IF, IHC, IP, WB, ELISA

Getestete Reaktivität:

Human

**Hinweis-IHC: Antigenmaskierung mit TE-Puffer pH 9,0 empfohlen. (\*) Wahlweise kann die Antigenmaskierung auch mit Citratpuffer pH 6,0 erfolgen.**

Positivkontrollen:

WB : HeLa-Zellen, A549-Zellen, Jurkat-Zellen, MOLT-4-Zellen

IP : A549-Zellen,

IHC : humanes Kolongewebe, humanes Pankreasgewebe

IF : A549-Zellen,

## Hintergrundinformationen

Pleckstrin homology (PH) domain is commonly found in eukaryotic signaling proteins and possesses multiple functions including the abilities to bind inositol phosphates and various proteins. The tandem PH domain containing protein-1 (TAPP1) or PH domain containing-family A (phosphoinositide binding specific) member 1 (PLEKHA1), interacts strongly and specifically with phosphatidylinositol 3,4-trisphosphate [PtdIns(3,4)P(2)], which is one of the immediate breakdown products of PtdIns(3,4,5)P(3) and functions as a signalling molecule in insulin- and growth-factor-stimulated pathways. TAPP1 is also associated with the protein- tyrosine-phosphatase-like protein-1 (PTPL1 also known as FAP-1) and maintains PTPL1 in cytoplasm. By binding to PtdIns(3,4)P(2) and PTPL1, TAPP1 may regulate the membrane localization of PTPL1."

## Lagerung

Lagerungsbedingungen:

Bei -20°C lagern. Nach dem Versand ein Jahr lang stabil

Lagerungspuffer:

PBS mit 0.02% Natriumazid und 50% Glycerin pH 7.3.

Aliquotieren ist nicht notwendig bei -20°C Lagerung

\*\*\* 20ul-Größen enthalten 0.1% BSA

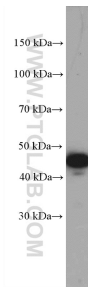
For technical support and original validation data for this product please contact:

T: 1 (888) 4PTGLAB (1-888-478-4522) (toll free  
in USA), or 1(312) 455-8498 (outside USA)

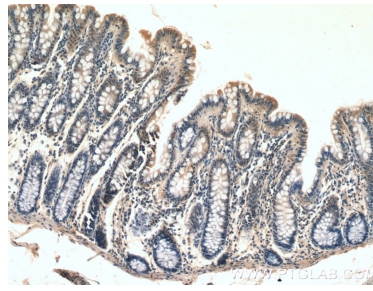
E: proteintech@ptglab.com  
W: ptglab.com

This product is exclusively available under Proteintech Group brand and is not available to purchase from any other manufacturer.

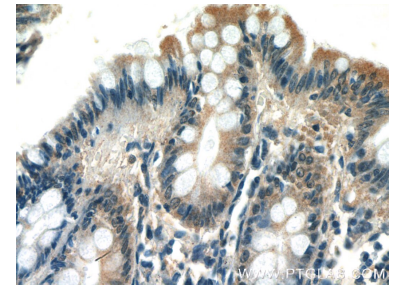
## Ausgewählte Validierungsdaten



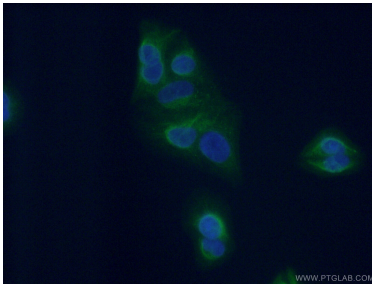
HeLa cells were subjected to SDS PAGE followed by western blot with 26830-1-AP (PLEKHA1 Antibody) at dilution of 1:600 incubated at room temperature for 1.5 hours.



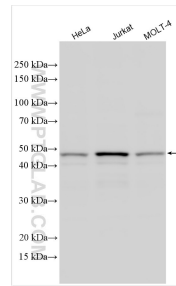
Immunohistochemical analysis of paraffin-embedded human colon tissue slide using 26830-1-AP (PLEKHA1 antibody) at dilution of 1:200 (under 10x lens).



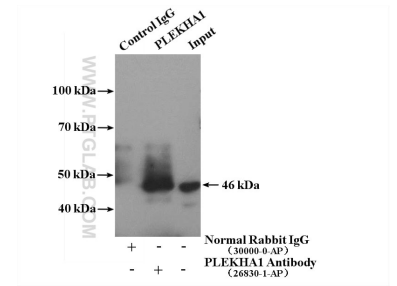
Immunohistochemical analysis of paraffin-embedded human colon tissue slide using 26830-1-AP (PLEKHA1 antibody) at dilution of 1:200 (under 40x lens).



Immunofluorescent analysis of (-20°C Ethanol) fixed A549 cells using 26830-1-AP (PLEKHA1 antibody) at dilution of 1:50 and Alexa Fluor 488-conjugated AffiniPure Goat Anti-Rabbit IgG(H+L).



Various lysates were subjected to SDS PAGE followed by western blot with 26830-1-AP (PLEKHA1 antibody) at dilution of 1:1000 incubated at room temperature for 1.5 hours.



IP result of anti-PLEKHA1 (IP:26830-1-AP, 4ug; Detection:26830-1-AP 1:1000) with A549 cells lysate 1600 ug.