

Nur für Forschungszwecke

SLC22A16 Polyklonaler Antikörper

Katalog-Nr.:26833-1-AP



Allgemeine Informationen

Katalog-Nr.: 26833-1-AP	GenBank-Zugangsnummer: BC047565	Reinigungsmethode: Antigen-Affinitätsreinigung
Größe: 150ul , Konzentration: 500 µg/ml von Nanodrop;	GeneID (NCBI): 85413	Empfohlene Verdünnungen: WB 1:1000-1:4000 IHC 1:50-1:500
Wirt: Kaninchen	Vollständiger Name: solute carrier family 22 (organic cation/carnitine transporter), member 16	
Isotyp: IgG	Berechnete Masse: 65 kDa	
Immunogen Katalognummer: AG25270	Beobachtete Masse: 68 kDa	

Anwendungen

Geprüfte Anwendungen:

IHC, WB, ELISA

Getestete Reaktivität:

Human

Hinweis-IHC: Antigendemaskierung mit TE-Puffer pH 9,0 empfohlen. (*) Wahlweise kann die Antigendemaskierung auch mit Citratpuffer pH 6,0 erfolgen.

Positivkontrollen:

WB : MCF-7-Zellen, PC-3-Zellen

IHC : humanes Mammakarzinomgewebe, humanes Magenkrebsgewebe

Hintergrundinformationen

SLC22A16, also named as CT2, FLIPT2, or OCT6, belongs to the major facilitator (TC 2.A.1) superfamily and organic cation transporter (TC 2.A.1.19) family. SLC22A16 encodes an organic zwitterion transporter protein that transports carnitine and some anticancer drugs, including anthracyclines. As a carnitine transporter, SLC22A16 is involved in the regulation of fatty acid oxidation (FAO), which plays an important role also in the metabolic transformation of cancer cells. SLC22A16 expression in cancer cells is associated with increased sensitivity to the cytotoxic effects of doxorubicin. SLC22A16 has 3 isoforms with the molecular mass of 58, 61 and 65 kDa (PMID: 35761855, 35608746).

Lagerung

Lagerungsbedingungen:

Bei -20°C lagern. Nach dem Versand ein Jahr lang stabil

Lagerungspuffer:

PBS mit 0.02% Natriumazid und 50% Glycerin pH 7.3.

Aliquotieren ist nicht notwendig bei -20°C Lagerung

***** 20ul-Größen enthalten 0.1% BSA**

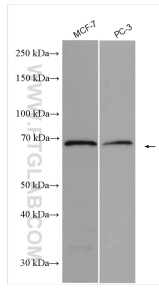
For technical support and original validation data for this product please contact:

T: 1 (888) 4PTGLAB (1-888-478-4522) (toll free
in USA), or 1(312) 455-8498 (outside USA)

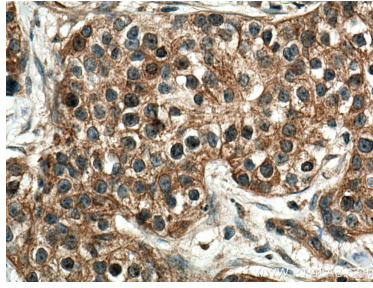
E: proteintech@ptglab.com
W: ptglab.com

This product is exclusively available under Proteintech Group brand and is not available to purchase from any other manufacturer.

Ausgewählte Validierungsdaten



Various lysates were subjected to SDS PAGE followed by western blot with 26833-1-AP (SLC22A16 antibody) at dilution of 1:2000 incubated at room temperature for 1.5 hours.



Immunohistochemical analysis of paraffin-embedded human breast cancer tissue slide using 26833-1-AP (SLC22A16 antibody) at dilution of 1:200 (under 40x lens). Heat mediated antigen retrieval with Tris-EDTA buffer (pH 9.0).