

Nur für Forschungszwecke

# PKC Zeta Polyklonaler Antikörper

Katalog-Nr.: 26899-1-AP

4 Publikationen



## Allgemeine Informationen

<b>Katalog-Nr.:</b> 26899-1-AP	<b>GenBank-Zugangsnummer:</b> BC014270	<b>Reinigungsmethode:</b> Antigen-Affinitätsreinigung
<b>Größe:</b> 150ul, Konzentration: 600 µg/ml von Nanodrop und 333 µg/ml durch die Bradford-Methode mit BSA als Standard;	<b>GeneID (NCBI):</b> 5590	<b>Empfohlene Verdünnungen:</b> WB 1:1000-1:4000 IF 1:50-1:500
<b>Wirt:</b> Kaninchen	<b>Vollständiger Name:</b> protein kinase C, zeta	
<b>Isotyp:</b> IgG	<b>Berechnete Masse:</b> 80 kDa	
<b>Immunogen Katalognummer:</b> AG25391	<b>Beobachtete Masse:</b> 67 kDa	

## Anwendungen

<b>Geprüfte Anwendungen:</b> IF, WB, ELISA	<b>Positivkontrollen:</b> WB : HEK-293T-Zellen, HT-29-Zellen
<b>In Publikationen genannte Anwendungen:</b> WB	<b>IF :</b> HeLa-Zellen, NIH/3T3-Zellen
<b>Getestete Reaktivität:</b> Human, Maus	
<b>Zitierte Arten:</b> Human, Maus	

## Hintergrundinformationen

Protein kinase C (PKC) zeta is a member of the PKC family of serine/threonine kinases which are involved in a variety of cellular processes such as proliferation, differentiation and secretion. Unlike the classical PKC isoenzymes which are calcium-dependent, PKC zeta exhibits a kinase activity which is independent of calcium and diacylglycerol but not of phosphatidylserine. Furthermore, it is insensitive to typical PKC inhibitors and cannot be activated by phorbol ester. Unlike the classical PKC isoenzymes, it has only a single zinc finger module. These structural and biochemical properties indicate that the zeta subspecies is related to, but distinct from other isoenzymes of PKC.

## Bemerkenswerte Veröffentlichungen

Verfasser	Pubmed ID	Journal	Anwendung
Qianxia Yin	33951300	J Cell Mol Med	WB
Hongyi Zhou	31185001	JCI Insight	WB
Zhong-Wen Chang	35122947	Fish Shellfish Immunol	WB

## Lagerung

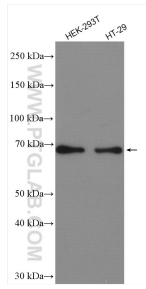
**Lagerungsbedingungen:**  
Bei -20°C lagern. Nach dem Versand ein Jahr lang stabil  
**Lagerungspuffer:**  
PBS mit 0.02% Natriumazid und 50% Glycerin pH 7.3.  
Aliquotieren ist nicht notwendig bei -20°C Lagerung

\*\*\* 20ul-Größen enthalten 0.1% BSA

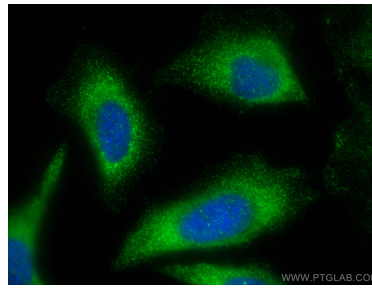
For technical support and original validation data for this product please contact:  
T: 1 (888) 4PTGLAB (1-888-478-4522) (toll free in USA), or 1(312) 455-8498 (outside USA)  
E: proteintech@ptglab.com  
W: ptglab.com

This product is exclusively available under Proteintech Group brand and is not available to purchase from any other manufacturer.

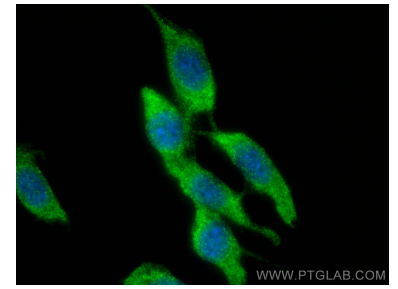
## Ausgewählte Validierungsdaten



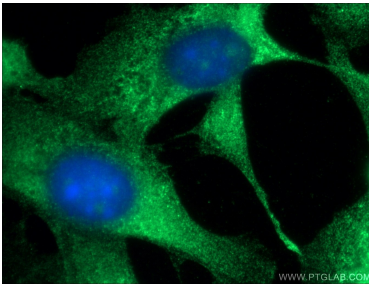
Various lysates were subjected to SDS PAGE followed by western blot with 26899-1-AP (PKC zeta antibody) at dilution of 1:2000 incubated at room temperature for 1.5 hours.



Immunofluorescent analysis of (-20°C Ethanol) fixed HeLa cells using PKC Zeta antibody (26899-1-AP) at dilution of 1:200 and CoraLite®488-Conjugated AffiniPure Goat Anti-Rabbit IgG(H+L).



Immunofluorescent analysis of (-20°C Ethanol) fixed NIH/3T3 cells using PKC Zeta antibody (26899-1-AP) at dilution of 1:200 and CoraLite®488-Conjugated AffiniPure Goat Anti-Rabbit IgG(H+L).



Immunofluorescent analysis of (-20°C Ethanol) fixed NIH/3T3 cells using 26899-1-AP (PKC zeta antibody) at dilution of 1:50 and Alexa Fluor 488-conjugated AffiniPure Goat Anti-Rabbit IgG(H+L).