

Allgemeine Informationen

Katalog-Nr.: 26928-1-AP	GenBank-Zugangsnummer: BC060804	Reinigungsmethode: Antigen-Affinitätsreinigung
Größe: 150ul , Konzentration: 300 µg/ml von Nanodrop und 267 µg/ml durch die Bradford-Methode mit BSA als Standard;	GeneID (NCBI): 8038	Empfohlene Verdünnungen: WB 1:500-1:1000 IHC 1:50-1:500
Wirt: Kaninchen	Vollständiger Name: ADAM metallopeptidase domain 12	
Isotyp: IgG	Berechnete Masse: 909 aa, 100 kDa	
Immunogen Katalognummer: AG17474	Beobachtete Masse: 68 kDa	

Anwendungen

Geprüfte Anwendungen: IHC, WB,ELISA	Positivkontrollen: WB : Maushirngewebe, A431-Zellen, A549-Zellen, Rattenhirngewebe IHC : humanes Endometriumkarzinomgewebe,
Getestete Reaktivität: Human, Maus, Ratte	
Hinweis-IHC: Antigenmaskierung mit TE-Puffer pH 9,0 empfohlen. (*) Wahlweise kann die Antigenmaskierung auch mit Citratpuffer pH 6,0 erfolgen.	

Hintergrundinformationen

ADAM12, also named as MLTN and Meltrin-alpha, is involved in skeletal muscle regeneration, specifically at the onset of cell fusion. It is also involved in macrophage-derived giant cells (MGC) and osteoclast formation from mononuclear precursors. ADAM12 is expressed in human malignant tumors. It is involved in the regulation of growth factor activities and integrin functions, leading to promotion of cell growth and invasion, although the precise mechanisms of these are not clear at the present time.(PMID:17355265) ADAM12's ability to degrade extracellular matrix components likely allows it to detach cancer cells from the basement membrane and assist them on their route to metastasis. But the protein's role not just as a biomarker of breast cancer but as a gateway to cancer cell migration is only now being understood. ADAM12 has 2 isoforms with the calculated molecular mass of 100 and 80 kDa, and this antibody can recognize all isoforms of ADAM12. ADAM12 has 4 forms: 120kd full-length form, 90 kDa mature (processed form that lack the prodomain), 50-68 kDa degradation product and 27 kDa prodomain.

Lagerung

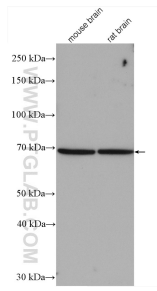
Lagerungsbedingungen:
Bei -20°C lagern. Nach dem Versand ein Jahr lang stabil
Lagerungspuffer:
PBS mit 0.02% Natriumazid und 50% Glycerin pH 7.3.
Aliquotieren ist nicht notwendig bei -20°C Lagerung

*** 20ul-Größen enthalten 0.1% BSA

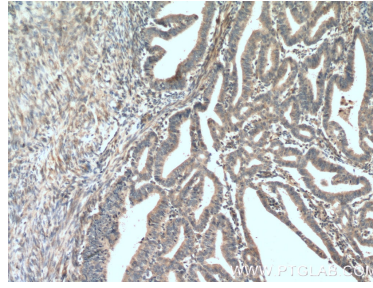
For technical support and original validation data for this product please contact:
T: 1 (888) 4PTGLAB (1-888-478-4522) (toll free in USA), or 1(312) 455-8498 (outside USA)
E: proteintech@ptglab.com
W: ptglab.com

This product is exclusively available under Proteintech Group brand and is not available to purchase from any other manufacturer.

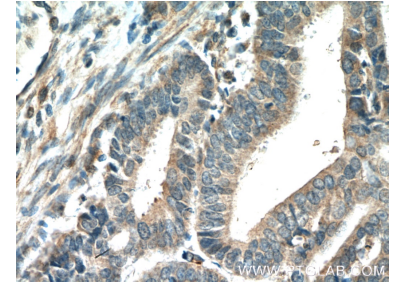
Ausgewählte Validierungsdaten



Various lysates were subjected to SDS PAGE followed by western blot with 26928-1-AP (ADAM12 antibody) at dilution of 1:600 incubated at room temperature for 1.5 hours.



Immunohistochemical analysis of paraffin-embedded human endometrial cancer tissue slide using 26928-1-AP (ADAM12 Antibody) at dilution of 1:200 (under 10x lens). Heat mediated antigen retrieval with Tris-EDTA buffer (pH 9.0).



Immunohistochemical analysis of paraffin-embedded human endometrial cancer tissue slide using 26928-1-AP (ADAM12 Antibody) at dilution of 1:200 (under 40x lens). Heat mediated antigen retrieval with Tris-EDTA buffer (pH 9.0).