

Nur für Forschungszwecke

Cyclin D1 Polyklonaler Antikörper

Katalog-Nr.:26939-1-AP

Vorgestelltes Produkt

267 Publikationen



Allgemeine Informationen

Katalog-Nr.: 26939-1-AP	GenBank-Zugangsnummer: BC000076	Reinigungsmethode: Antigen-Affinitätsreinigung
Größe: 150ul , Konzentration: 500 µg/ml von Nanodrop;	GeneID (NCBI): 595	Empfohlene Verdünnungen: WB 1:5000-1:50000 IHC 1:750-1:3000 IF 1:200-1:800
Wirt: Kaninchen	Vollständiger Name: cyclin D1	
Isotyp: IgG	Berechnete Masse: 295 aa, 34 kDa	
Immunogen Katalognummer: AG25393	Beobachtete Masse: 34 kDa	

Anwendungen

Geprüfte Anwendungen:
FC (Intra), IF, IHC, WB, ELISA

In Publikationen genannte Anwendungen:
IF, IHC, WB

Getestete Reaktivität:
Human, Maus, Ratte

Zitierte Arten:
Hausschwein, Human, Hund, Maus, Ratte

Hinweis-IHC: Antigendemaskierung mit TE-Puffer pH 9,0 empfohlen. (*) Wahlweise kann die Antigendemaskierung auch mit Citratpuffer pH 6,0 erfolgen.

Positivkontrollen:

WB : LNCaP-Zellen, C6-Zellen, MCF-7-Zellen

IHC : humanes Ovarialkarzinomgewebe, humanes Lungenkarzinomgewebe, humanes

Ösophaguskarzinomgewebe, Mausmilzgewebe, Maus-Pankreasgewebe

IF : MCF-7-Zellen,

Hintergrundinformationen

CCND1 (cyclin D1), also known as PRAD1 or BCL1, belongs to the highly conserved cyclin family, whose members are characterized by a dramatic periodicity in protein abundance throughout the cell cycle. CCND1 forms a complex with and functions as a regulatory subunit of CDK4 or CDK6, whose activity is required for cell cycle G1/S transition. The CCND1 gene, located on 11q13 has been reported to be overexpressed in mantle cell lymphoma (MCL) due to the chromosomal translocation. CCND1 has been shown to interact with tumor suppressor protein Rb and the expression of this gene is regulated positively by Rb. Over-expression of CCND1 is known to correlate with the early onset of cancer and risk of tumor progression and metastasis.

Bemerkenswerte Veröffentlichungen

Verfasser	Pubmed ID	Journal	Anwendung
Zhou Yang	32993738	J Exp Clin Cancer Res	WB
Pengyun Li	36130940	Cell Death Dis	WB
Siwen Zhang	34546849	Bioengineered	WB

Lagerung

Lagerungsbedingungen:

Bei -20°C lagern. Nach dem Versand ein Jahr lang stabil

Lagerungspuffer:

PBS mit 0.02% Natriumazid und 50% Glycerin pH 7.3.

Aliquotieren ist nicht notwendig bei -20°C Lagerung

***** 20ul-Größen enthalten 0.1% BSA**

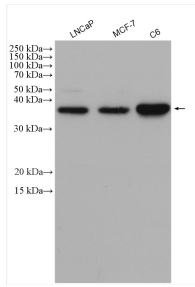
For technical support and original validation data for this product please contact:

T: 1 (888) 4PTGLAB (1-888-478-4522) (toll free in USA), or 1(312) 455-8498 (outside USA)

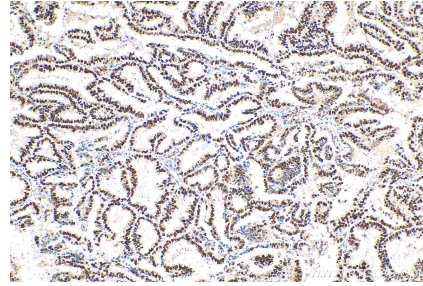
E: proteintech@ptglab.com
W: ptglab.com

This product is exclusively available under Proteintech Group brand and is not available to purchase from any other manufacturer.

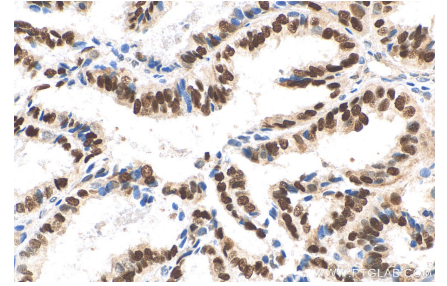
Ausgewählte Validierungsdaten



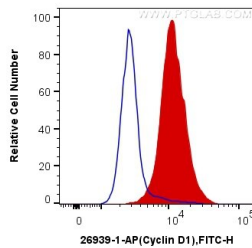
Various lysates were subjected to SDS PAGE followed by western blot with 26939-1-AP (Cyclin D1 antibody) at dilution of 1:10000 incubated at room temperature for 1.5 hours.



Immunohistochemical analysis of paraffin-embedded human ovary tumor tissue slide using 26939-1-AP (Cyclin D1 antibody) at dilution of 1:1500 (under 10x lens). Heat mediated antigen retrieval with Tris-EDTA buffer (pH 9.0).



Immunohistochemical analysis of paraffin-embedded human ovary tumor tissue slide using 26939-1-AP (Cyclin D1 antibody) at dilution of 1:1500 (under 40x lens). Heat mediated antigen retrieval with Tris-EDTA buffer (pH 9.0).



1X10⁶ MCF-7 cells were intracellularly stained with 0.2 ug Anti-Human Cyclin D1 (26939-1-AP) and CoraLite®488-Conjugated AffiniPure Goat Anti-Rabbit IgG(H+L) at dilution 1:1000 (red), or 0.2 ug Control Antibody. Cells were fixed and permeabilized with Transcription Factor Staining Buffer Kit (PF00011).



Immunofluorescent analysis of (4% PFA) fixed MCF-7 cells using Cyclin D1 antibody (26939-1-AP) at dilution of 1:400 and CoraLite®488-Conjugated AffiniPure Goat Anti-Rabbit IgG(H+L), CL594-Phalloidin (red).