

## Allgemeine Informationen

**Katalog-Nr.:**  
26967-1-AP

**Größe:**  
150ul, Konzentration: 450 µg/ml von 598 Nanodrop und 433 µg/ml durch die Bradford-Methode mit BSA als Standard;

**Wirt:**  
Kaninchen

**Isotyp:**  
IgG

**Immunogen Katalognummer:**  
AG25604

**GenBank-Zugangsnummer:**  
BC019307

**GeneID (NCBI):**

**Vollständiger Name:**  
BCL2-like 1

**Berechnete Masse:**  
26 kDa

**Beobachtete Masse:**  
30 kDa

**Reinigungsmethode:**

Antigen-Affinitätsreinigung

**Empfohlene Verdünnungen:**

WB 1:500-1:2000  
IP 0.5-4.0 µg für IP und 1:500-1:2000 für WB  
IHC 1:50-1:500

## Anwendungen

**Geprüfte Anwendungen:**

FC, IHC, IP, WB, ELISA

**In Publikationen genannte Anwendungen:**

IF, IHC, WB

**Getestete Reaktivität:**

Human, Maus

**Zitierte Arten:**

Human, Hund, Maus, Ratte

**Hinweis-IHC: Antigendemaskierung mit TE-Puffer pH 9,0 empfohlen. (\*) Wahlweise kann die Antigendemaskierung auch mit Citratpuffer pH 6,0 erfolgen.**

**Positivkontrollen:**

WB : NIH/3T3-Zellen, RAW 264.7-Zellen

IP : NIH/3T3-Zellen,

IHC : humanes Hodengewebe, humanes Lungenkarzinomgewebe

## Hintergrundinformationen

BCL2L1 is a member of the BCL-2 protein family. BCL2L1 is expressed as three isoforms, Bcl-X(L), Bcl-X(s) and Bcl-X(beta), and is located at the outer mitochondrial membrane. The Bcl-XL isoform is a 233 amino acid protein, acting as an apoptotic inhibitor. Bcl-XL can form heterodimers with BAX, BAK or BCL2, and the heterodimerization with BAX does not seem to be required for anti-apoptotic activity. The Bcl-XS isoform is a shorter variant that is 178 amino acids in length and lacks a 63 amino acid region (amino acids 126-188), acting as an apoptotic activator. This antibody can recognize Bcl-XL, Bcl-XS and Bcl-X(Beta).

## Bemerkenswerte Veröffentlichungen

Verfasser	Pubmed ID	Journal	Anwendung
Guibin Lin	31607919	Front Pharmacol	WB
Jiangjiang Fan	30246250	J Cell Physiol	WB
Xiao-Lei Xin	31542790	Med Sci Monit	WB

## Lagerung

**Lagerungsbedingungen:**

Bei -20°C lagern. Nach dem Versand ein Jahr lang stabil

**Lagerungspuffer:**

PBS mit 0.02% Natriumazid und 50% Glycerin pH 7.3.

Aliquotieren ist nicht notwendig bei -20°C Lagerung

**\*\*\* 20ul-Größen enthalten 0.1% BSA**

For technical support and original validation data for this product please contact:

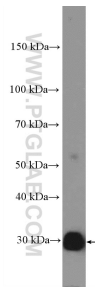
T: 1 (888) 4PTGLAB (1-888-478-4522) (toll free in USA), or 1(312) 455-8498 (outside USA)

E: [proteintech@ptglab.com](mailto:proteintech@ptglab.com)

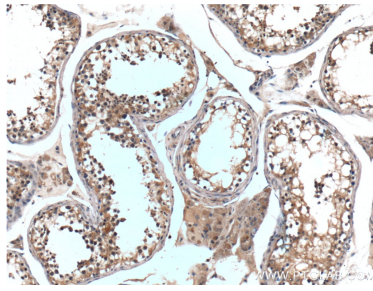
W: [ptglab.com](http://ptglab.com)

**This product is exclusively available under Proteintech Group brand and is not available to purchase from any other manufacturer.**

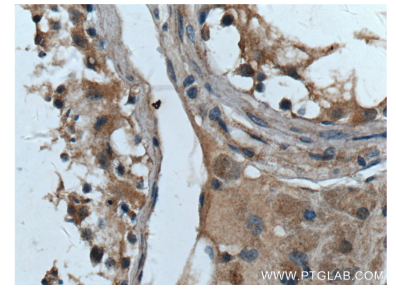
## Ausgewählte Validierungsdaten



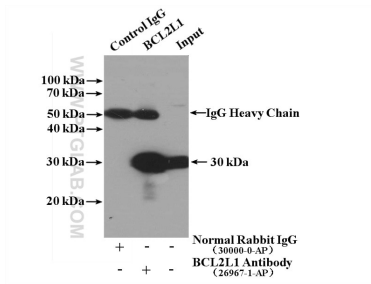
NIH/3T3 cells were subjected to SDS PAGE followed by western blot with 26967-1-AP (Bcl-XL antibody) at dilution of 1:1000 incubated at room temperature for 1.5 hours.



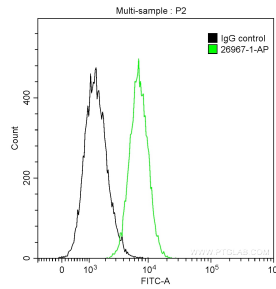
Immunohistochemical analysis of paraffin-embedded human testis tissue slide using 26967-1-AP (Bcl-XL antibody) at dilution of 1:200 (under 10x lens).



Immunohistochemical analysis of paraffin-embedded human testis tissue slide using 26967-1-AP (Bcl-XL antibody) at dilution of 1:200 (under 40x lens).



IP result of anti-Bcl-XL (IP:26967-1-AP, 4ug; Detection:26967-1-AP 1:1000) with NIH/3T3 cells lysate 2000 ug.



$1 \times 10^6$  Jurkat cells were intracellularly stained with 0.2 ug Anti-Human Bcl-XL (26967-1-AP) and CoraLite®488-Conjugated AffiniPure Goat Anti-Rabbit IgG(H+L) at dilution 1:1000 (green), and 0.2 ug Control Antibody. Cells were fixed with 90% MeOH.