

Nur für Forschungszwecke

S100A9 Polyklonaler Antikörper

Katalog-Nr.:26992-1-AP

Vorgestelltes Produkt

27 Publikationen



Allgemeine Informationen

Katalog-Nr.:
26992-1-AP

Größe:
150ul, Konzentration: 500 µg/ml von
Nanodrop und 367 µg/ml durch die
Bradford-Methode mit BSA als
Standard;

Wirt:
Kaninchen

Isotyp:
IgG

Immunogen Katalognummer:
AG25764

GenBank-Zugangsnummer:
BC047681

GeneID (NCBI):
6280

Vollständiger Name:
S100 calcium binding protein A9

Berechnete Masse:
13 kDa

Beobachtete Masse:
14 kDa

Reinigungsmethode:

Antigen-Affinitätsreinigung

Empfohlene Verdünnungen:

WB 1:500-1:2000
IP 0.5-4.0 µg für IP und 1:500-1:2000
für WB
IHC 1:50-1:500
IF 1:200-1:800

Anwendungen

Geprüfte Anwendungen:

IF, IHC, IP, WB, ELISA

In Publikationen genannte Anwendungen:

CoIP, FC, IF, IHC, IP, WB

Getestete Reaktivität:

Human, Maus

Zitierte Arten:

Human, Maus, Ratte

**Hinweis-IHC: Antigendemaskierung mit TE-
Puffer pH 9,0 empfohlen. (*) Wahlweise
kann die Antigendemaskierung auch mit
Citratpuffer pH 6,0 erfolgen.**

Positivkontrollen:

WB: HL-60-Zellen, MCF-7-Zellen

IP: MCF-7-Zellen,

IHC: humanes Mammakarzinomgewebe, humanes
Leberkarzinomgewebe, humanes
Ösophaguskarzinomgewebe, humanes
Tonsillitisgewebe, Mausmilzgewebe

IF: HeLa-Zellen, A549-Zellen, HepG2-Zellen

Hintergrundinformationen

S100A9 is a calcium binding protein as a member of the S100 family of proteins. S100 proteins are low molecular weight (9 to 14 kDa) intracellular calcium-binding proteins that control key cellular pathways including regulation of the cytoskeleton, cell migration and adhesion, and host oxidative defense. S100A9 may exist as a homodimer, heterodimer with an S100A8 partner (S100A8/A9), or as a heterotetramer with an S100A8 partner (S100A8/A9). S100A8 and S100A9 are found intracellularly in granulocytes, monocytes, and early differentiation stages of macrophages.

Bemerkenswerte Veröffentlichungen

Verfasser	Pubmed ID	Journal	Anwendung
Yi-Han Lin	32963032	Mol Cell Proteomics	WB
Li Zhang	32920982	Acta Physiol (Oxf)	WB
Yize Sun	34673424	Biomed Pharmacother	WB

Lagerung

Lagerungsbedingungen:

Bei -20°C lagern. Nach dem Versand ein Jahr lang stabil

Lagerungspuffer:

PBS mit 0.02% Natriumazid und 50% Glycerin pH 7.3.

Aliquotieren ist nicht notwendig bei -20°C Lagerung

*** 20ul-Größen enthalten 0.1% BSA

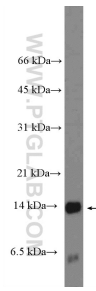
For technical support and original validation data for this product please contact:

T: 1 (888) 4PTGLAB (1-888-478-4522) (toll free
in USA), or 1(312) 455-8498 (outside USA)

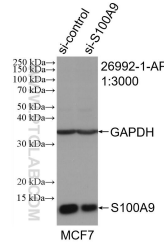
E: proteintech@ptglab.com
W: ptglab.com

This product is exclusively available under Proteintech Group brand and is not available to purchase from any other manufacturer.

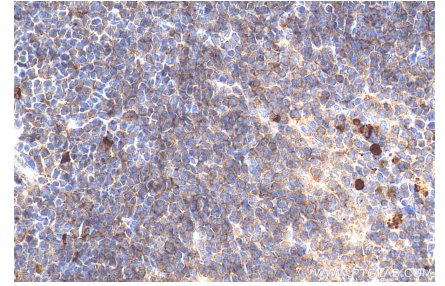
Ausgewählte Validierungsdaten



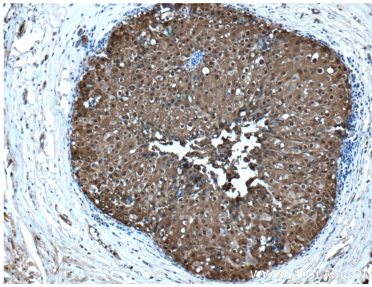
HL-60 cells were subjected to SDS PAGE followed by western blot with 26992-1-AP (S100A9 Antibody) at dilution of 1:1000 incubated at room temperature for 1.5 hours.



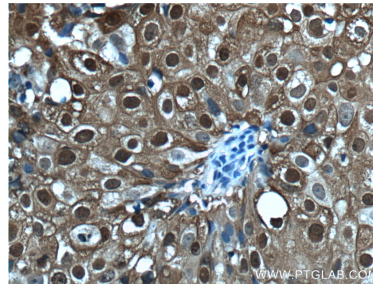
WB result of S100A9 antibody (26992-1-AP; 1:3000; incubated at room temperature for 1.5 hours) with sh-Control and sh-S100A9 transfected MCF-7 cells.



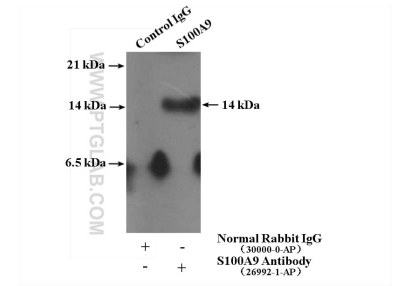
Immunohistochemical analysis of paraffin-embedded mouse spleen tissue slide using 26992-1-AP (S100A9 antibody) at dilution of 1:200 (under 40x lens). Heat mediated antigen retrieval with Tris-EDTA buffer (pH 9.0).



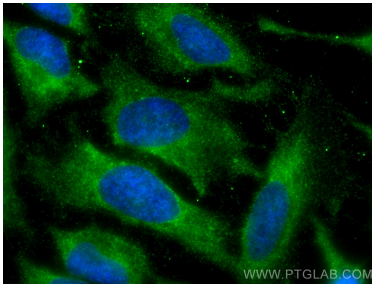
Immunohistochemical analysis of paraffin-embedded human breast cancer tissue slide using 26992-1-AP (S100A9 Antibody) at dilution of 1:200 (under 10x lens). Heat mediated antigen retrieval with Tris-EDTA buffer (pH 9.0).



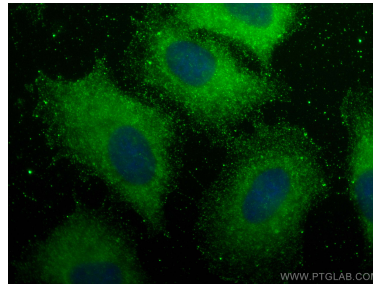
Immunohistochemical analysis of paraffin-embedded human breast cancer tissue slide using 26992-1-AP (S100A9 Antibody) at dilution of 1:200 (under 40x lens). Heat mediated antigen retrieval with Tris-EDTA buffer (pH 9.0).



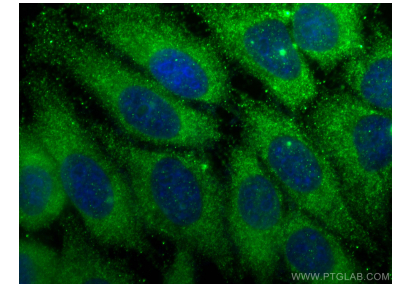
IP result of anti-S100A9 (IP:26992-1-AP, 4μg; Detection:26992-1-AP 1:1000) with MCF-7 cells lysate 2800 μg.



Immunofluorescent analysis of (-20°C Methanol) fixed HeLa cells using S100A9 antibody (26992-1-AP) at dilution of 1:400 and CoraLite®488-Conjugated AffiniPure Goat Anti-Rabbit IgG(H+L).



Immunofluorescent analysis of (-20°C Methanol) fixed A549 cells using S100A9 antibody (26992-1-AP) at dilution of 1:200 and CoraLite®488-Conjugated AffiniPure Goat Anti-Rabbit IgG(H+L).



Immunofluorescent analysis of (-20°C Ethanol) fixed HepG2 cells using S100A9 antibody (26992-1-AP) at dilution of 1:400 and CoraLite®488-Conjugated AffiniPure Goat Anti-Rabbit IgG(H+L).