

Nur für Forschungszwecke

# CITED1 Polyklonaler Antikörper

Katalog-Nr.:26999-1-AP



## Allgemeine Informationen

**Katalog-Nr.:**  
26999-1-AP

**Größe:**

150ul , Konzentration: 1000 µg/ml von4435

Nanodrop und 467 µg/ml durch die Bradford-Methode mit BSA als Standard;

**Wirt:**

Kaninchen

**Isotyp:**

IgG

**Immunogen Katalognummer:**  
AG24643

**GenBank-Zugangsnummer:**

BC004240

**GeneID (NCBI):**

4435

**Vollständiger Name:**

Cbp/p300-interacting transactivator, with Glu/Asp-rich carboxy-terminal domain, 1

**Berechnete Masse:**

27 kDa

**Beobachtete Masse:**

30 kDa

**Reinigungsmethode:**

Antigen-Affinitätsreinigung

**Empfohlene Verdünnungen:**

WB 1:1000-1:4000

IP 0.5-4.0 ug für IP und 1:200-1:1000 für WB

IHC 1:500-1:2000

IF 1:50-1:500

## Anwendungen

**Geprüfte Anwendungen:**

FC, IF, IHC, IP, WB, ELISA

**Getestete Reaktivität:**

Human, Maus, Ratte

**Hinweis-IHC: Antigendemaskierung mit TE-Puffer pH 9,0 empfohlen. (\*) Wahlweise kann die Antigendemaskierung auch mit Citratpuffer pH 6,0 erfolgen.**

**Positivkontrollen:**

**WB** : Rattenhodengewebe, A375-Zellen, Maushodengewebe

**IP** : A375-Zellen,

**IHC** : humanes Kolonkarzinomgewebe, humanes Schilddrüsenkarzinomgewebe, Rattenhodengewebe

**IF** : HEK-293-Zellen,

## Hintergrundinformationen

CITED1, also named as MSG1, belongs to the CITED family. CITED1 is a bifunctional transcriptional cofactor which is able to activate or repress transcription in association with other transcription factors. The CITED1 gene encodes a 27 kDa protein, but a 30 kDa band was also detected in the publication. The elevation of CITED1 may be directly associated with the preneoplastic phenotype (PMID: 23935526, 15272279, 15843474).

## Lagerung

**Lagerungsbedingungen:**

Bei -20°C lagern. Nach dem Versand ein Jahr lang stabil

**Lagerungspuffer:**

PBS mit 0.02% Natriumazid und 50% Glycerin pH 7.3.

Aliquotieren ist nicht notwendig bei -20°C Lagerung

**\*\*\* 20ul-Größen enthalten 0.1% BSA**

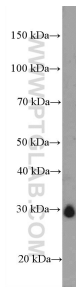
For technical support and original validation data for this product please contact:

T: 1 (888) 4PTGLAB (1-888-478-4522) (toll free in USA), or 1(312) 455-8498 (outside USA)

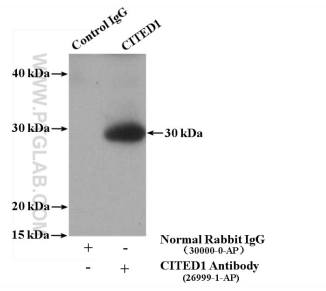
E: proteintech@ptglab.com  
W: ptglab.com

**This product is exclusively available under Proteintech Group brand and is not available to purchase from any other manufacturer.**

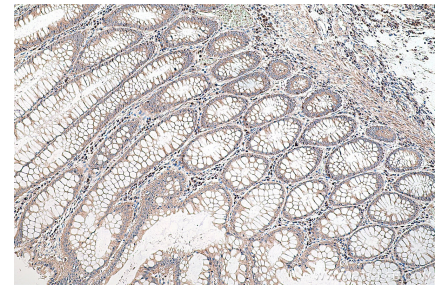
## Ausgewählte Validierungsdaten



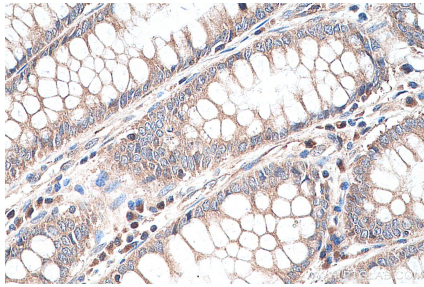
rat testis tissue were subjected to SDS PAGE followed by western blot with 26999-1-AP (CITED1 antibody) at dilution of 1:2000 incubated at room temperature for 1.5 hours.



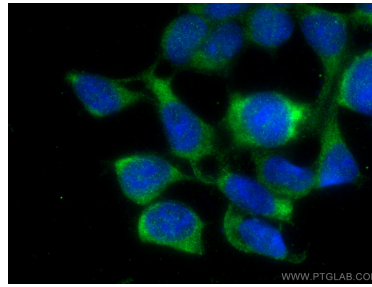
IP Result of anti-CITED1 (IP:26999-1-AP, 4ug; Detection:26999-1-AP 1:300) with A375 cells lysate 3000ug.



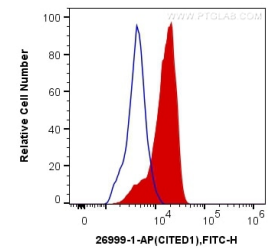
Immunohistochemical analysis of paraffin-embedded human colon cancer tissue slide using 26999-1-AP (CITED1 antibody) at dilution of 1:1000 (under 10x lens). Heat mediated antigen retrieval with Tris-EDTA buffer (pH 9.0).



Immunohistochemical analysis of paraffin-embedded human colon cancer tissue slide using 26999-1-AP (CITED1 antibody) at dilution of 1:1000 (under 40x lens). Heat mediated antigen retrieval with Tris-EDTA buffer (pH 9.0).



Immunofluorescent analysis of (-20°C Ethanol) fixed HEK-293 cells using CITED1 antibody (26999-1-AP) at dilution of 1:200 and CoraLite@488-Conjugated AffiniPure Goat Anti-Rabbit IgG(H+L).



1x10<sup>6</sup> HEK-293T cells were intracellularly stained with 0.4 ug Anti-Human CITED1 (26999-1-AP) and CoraLite@488-Conjugated AffiniPure Goat Anti-Rabbit IgG(H+L) at dilution 1:1000 (red), or 0.4 ug Control Antibody. Cells were fixed and permeabilized with Transcription Factor Staining Buffer Kit (PF00011).