

Allgemeine Informationen

Katalog-Nr.: 27044-1-AP	GenBank-Zugangsnummer: BC059395	Reinigungsmethode: Antigen-Affinitätsreinigung
Größe: 150ul, Konzentration: 800 µg/ml von Nanodrop und 467 µg/ml durch die Bradford-Methode mit BSA als Standard;	GeneID (NCBI): 2015	Empfohlene Verdünnungen: WB 1:500-1:2000 IHC 1:400-1:1600 IF 1:50-1:500
Wirt: Kaninchen	Vollständiger Name: egf-like module containing, mucin-like, hormone receptor-like 1	
Isotyp: IgG	Berechnete Masse: 886 aa, 97 kDa	
Immunogen Katalognummer: AG25883	Beobachtete Masse: 160 kDa	

Anwendungen

Geprüfte Anwendungen: IF, IHC, WB, ELISA	Positivkontrollen: WB : unboiled RAW 264.7 cells, HL-60-Zellen IHC : Mausmilzgewebe, Mauslebergewebe IF : peritoneale Makrophagen der Maus,
In Publikationen genannte Anwendungen: IF, IHC, WB	
Getestete Reaktivität: Human, Maus	
Zitierte Arten: Hausschwein, Human, Maus, Ratte	
Hinweis-IHC: Antigendemaskierung mit TE-Puffer pH 9,0 empfohlen. (*) Wahlweise kann die Antigendemaskierung auch mit Citratpuffer pH 6,0 erfolgen.	

Hintergrundinformationen

EMR1 (EGF-like module containing mucin-like hormone receptor 1), also known as Adhesion G protein-coupled receptor E1 (ADGRE1), is a surface receptor with seven transmembrane segments that belong to the EGF-7-transmembrane family of G protein-coupled receptors (PMID: 14647991, 7601460). EMR1 expression is restricted to eosinophilic granulocytes, where expression is overlapping with the eotaxin receptor CCR3 and the immunoglobulin-like lectin Siglec-8. Absence on other leukocytes, including basophils, implies that EMR1 is a highly specific marker for eosinophils in humans and may be used as a novel therapeutic target for eosinophilic disorders (PMID: 17823986, 24530099). F4/80, the murine homolog of EMR1, is a marker of murine macrophage. The apparent molecular weight of F4/80 is 160 kDa, which is larger than the calculated molecular weight due to post-translational modifications (PMID: 7308288; 8647179).

Bemerkenswerte Veröffentlichungen

Verfasser	Pubmed ID	Journal	Anwendung
Yu-Hui Gu	36386139	Front Pharmacol	IF
Junjie Li	33080309	Cancer Lett	IF
Huihui Tao	34843873	Toxicol Lett	IHC

Lagerung

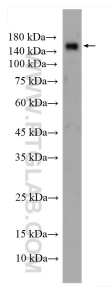
Lagerungsbedingungen:
Bei -20°C lagern. Nach dem Versand ein Jahr lang stabil
Lagerungspuffer:
PBS mit 0.02% Natriumazid und 50% Glycerin pH 7.3.
Aliquotieren ist nicht notwendig bei -20°C Lagerung

***** 20ul-Größen enthalten 0.1% BSA**

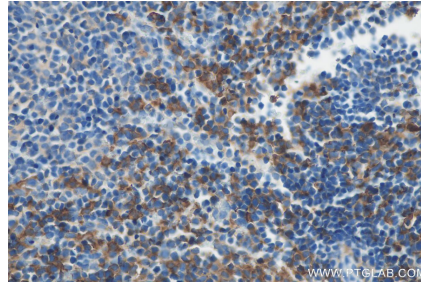
For technical support and original validation data for this product please contact:
T: 1 (888) 4PTGLAB (1-888-478-4522) (toll free in USA), or 1(312) 455-8498 (outside USA)
E: proteintech@ptglab.com
W: ptglab.com

This product is exclusively available under Proteintech Group brand and is not available to purchase from any other manufacturer.

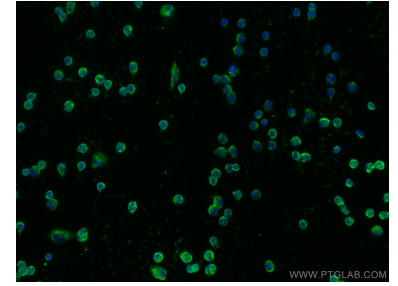
Ausgewählte Validierungsdaten



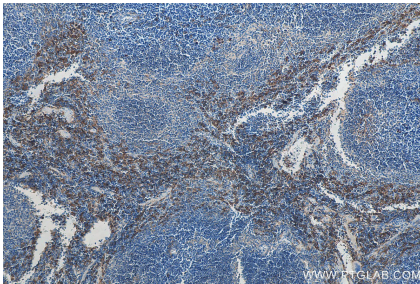
unboiled RAW 264.7 cells were subjected to SDS PAGE followed by western blot with 27044-1-AP (EMR1 antibody) at dilution of 1:1000 incubated at room temperature for 1.5 hours.



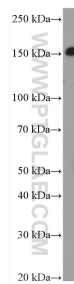
Immunohistochemical analysis of paraffin-embedded mouse spleen tissue slide using 27044-1-AP (EMR1 antibody) at dilution of 1:800 (under 40x lens). Heat mediated antigen retrieval with Tris-EDTA buffer (pH 9.0).



Immunofluorescent analysis of (-20°C Ethanol) fixed mouse peritoneal macrophages using EMR1 antibody (27044-1-AP) at dilution of 1:200 and CoraLite®488-Conjugated AffiniPure Goat Anti-Rabbit IgG(H+L).



Immunohistochemical analysis of paraffin-embedded mouse spleen tissue slide using 27044-1-AP (EMR1 antibody) at dilution of 1:800 (under 10x lens). Heat mediated antigen retrieval with Tris-EDTA buffer (pH 9.0).



HL-60 cells were subjected to SDS PAGE followed by western blot with 27044-1-AP (EMR1 antibody) at dilution of 1:300 incubated at room temperature for 1.5 hours.