

Nur für Forschungszwecke

# ATM Polyklonaler Antikörper

Katalog-Nr.: 27156-1-AP

Vorgestelltes Produkt

23 Publikationen



## Allgemeine Informationen

<b>Katalog-Nr.:</b> 27156-1-AP	<b>GenBank-Zugangsnummer:</b> BC137169	<b>Reinigungsmethode:</b> Antigen-Affinitätsreinigung
<b>Größe:</b> 150ul, Konzentration: 600 µg/ml von Nanodrop;	<b>GeneID (NCBI):</b> 472	<b>Empfohlene Verdünnungen:</b> WB 1:500-1:2000 IHC 1:50-1:500 IF 1:50-1:500
<b>Wirt:</b> Kaninchen	<b>Vollständiger Name:</b> ataxia telangiectasia mutated	
<b>Isotyp:</b> IgG	<b>Beobachtete Masse:</b> 310 kDa	
<b>Immunogen Katalognummer:</b> AG25909		

## Anwendungen

<b>Geprüfte Anwendungen:</b> IF, IHC, WB, ELISA	<b>Positivkontrollen:</b> WB : HEK-293-Zellen, HeLa-Zellen, HepG2-Zellen IHC : humanes Mammakarzinomgewebe, humanes Lungenkarzinomgewebe IF : HeLa-Zellen,
<b>In Publikationen genannte Anwendungen:</b> ChIP, IHC, WB	
<b>Getestete Reaktivität:</b> Human	
<b>Zitierte Arten:</b> Human, Maus	
<b>Hinweis-IHC: Antigenmaskierung mit TE-Puffer pH 9,0 empfohlen. (*) Wahlweise kann die Antigenmaskierung auch mit Citratpuffer pH 6,0 erfolgen.</b>	

## Hintergrundinformationen

The ATM protein is a member of the phosphatidylinositol 3-kinase family of proteins that respond to DNA damage by phosphorylating key substrates involved in DNA repair and/or cell cycle control. It is involved in mitogenic signal transduction, meiotic recombination, detection of DNA damage, and cell cycle control.

## Bemerkenswerte Veröffentlichungen

Verfasser	Pubmed ID	Journal	Anwendung
Xin Wen	36249018	Front Oncol	WB
Yang Liang	36175703	Med Oncol	WB
Jianqing Liang	33110215	Cell Death Differ	WB

## Lagerung

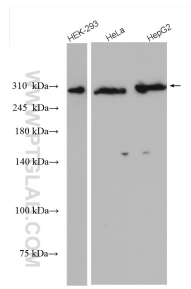
**Lagerungsbedingungen:**  
Bei -20°C lagern. Nach dem Versand ein Jahr lang stabil  
**Lagerungspuffer:**  
PBS mit 0.02% Natriumazid und 50% Glycerin pH 7.3.  
Aliquotieren ist nicht notwendig bei -20°C Lagerung

\*\*\* 20ul-Größen enthalten 0.1% BSA

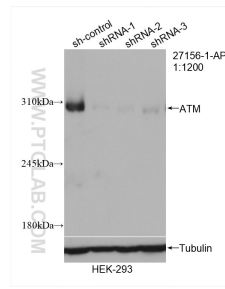
For technical support and original validation data for this product please contact:  
T: 1 (888) 4PTGLAB (1-888-478-4522) (toll free in USA), or 1(312) 455-8498 (outside USA)  
E: proteintech@ptglab.com  
W: ptglab.com

This product is exclusively available under Proteintech Group brand and is not available to purchase from any other manufacturer.

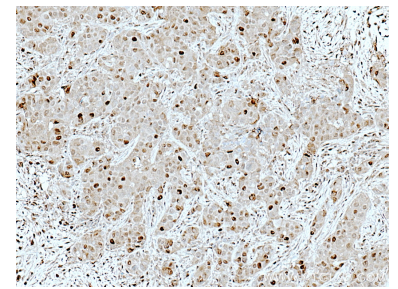
## Ausgewählte Validierungsdaten



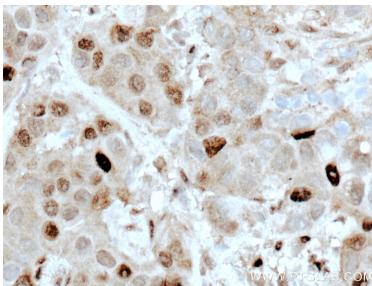
Various lysates were subjected to SDS PAGE followed by western blot with 27156-1-AP (ATM antibody) at dilution of 1:1000 incubated at room temperature for 1.5 hours.



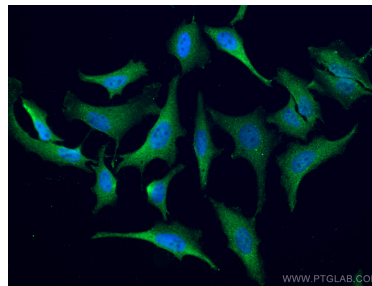
WB result of ATM antibody (27156-1-AP; 1:1200; incubated at room temperature for 1.5 hours) with sh-Control and sh-ATM transfected HEK-293 cells.



Immunohistochemical analysis of paraffin-embedded human breast cancer tissue slide using 27156-1-AP (ATM antibody) at dilution of 1:200 (under 10x lens. Heat mediated antigen retrieval with Tris-EDTA buffer (pH 9.0).



Immunohistochemical analysis of paraffin-embedded human breast cancer tissue slide using 27156-1-AP (ATM antibody) at dilution of 1:200 (under 40x lens. Heat mediated antigen retrieval with Tris-EDTA buffer (pH 9.0).



Immunofluorescent analysis of (4% PFA) fixed HeLa cells using 27156-1-AP (ATM antibody), at dilution of 1:200 and CoraLite®488-Conjugated AffiniPure Goat Anti-Rabbit IgG(H+L).