

Nur für Forschungszwecke

# P21 Polyklonaler Antikörper

Katalog-Nr.: 27296-1-AP

20 Publikationen



## Allgemeine Informationen

<b>Katalog-Nr.:</b> 27296-1-AP	<b>GenBank-Zugangsnummer:</b> BC000275	<b>Reinigungsmethode:</b> Antigen-Affinitätsreinigung
<b>Größe:</b> 150ul, Konzentration: 600 µg/ml von Nanodrop und 333 µg/ml durch die Bradford-Methode mit BSA als Standard;	<b>GeneID (NCBI):</b> 1026	<b>Empfohlene Verdünnungen:</b> WB 1:500-1:1000 IF 1:200-1:800
<b>Wirt:</b> Kaninchen	<b>Vollständiger Name:</b> cyclin-dependent kinase inhibitor 1A (p21, Cip1)	
<b>Isotyp:</b> IgG	<b>Berechnete Masse:</b> 21 kDa	
<b>Immunogen Katalognummer:</b> AG26129	<b>Beobachtete Masse:</b> 21 kDa	

## Anwendungen

<b>Geprüfte Anwendungen:</b> IF, WB, ELISA	<b>Positivkontrollen:</b> WB : Neuro-2a-Zellen, C6-Zellen, NIH/3T3-Zellen IF : MCF-7-Zellen,
<b>In Publikationen genannte Anwendungen:</b> IF, IHC, WB	
<b>Getestete Reaktivität:</b> Maus, Ratte	
<b>Zitierte Arten:</b> Human, Hund, Maus, Ratte	

## Hintergrundinformationen

CDKN1A (p21, CIP1, WAF1) is a cyclin-dependent kinase inhibitor. CDKN1A binds to and inhibits the activity of cyclin-CDK2 or -CDK4 complexes, and thus functions as a regulator of cell cycle progression at the G1 phase. The expression of CDKN1A is induced by wild-type but not mutant p53 protein, through which CDKN1A mediates the p53-dependent cell cycle G1 phase arrest in response to a variety of stress stimuli. CDKN1A can interact with proliferating cell nuclear antigen (PCNA), and plays a regulatory role in S phase DNA replication and DNA damage repair. CDKN1A was reported to be specifically cleaved by CASP3-like caspases, which thus leads to a dramatic activation of CDK2, and may be instrumental in the execution of apoptosis following caspase activation. Two alternatively spliced variants, which encode an identical protein, have been reported.

## Bemerkenswerte Veröffentlichungen

Verfasser	Pubmed ID	Journal	Anwendung
Hui-Hui Wang	36233264	Int J Mol Sci	WB
Hongzhu Li	34779492	Int J Mol Med	WB
Yuanyuan Li	36343723	Brain Res	WB

## Lagerung

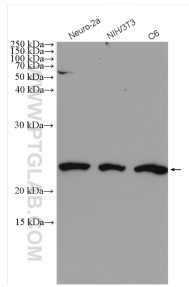
**Lagerungsbedingungen:**  
Bei -20°C lagern. Nach dem Versand ein Jahr lang stabil  
**Lagerungspuffer:**  
PBS mit 0.02% Natriumazid und 50% Glycerin pH 7.3.  
Aliquotieren ist nicht notwendig bei -20°C Lagerung

\*\*\* 20ul-Größen enthalten 0.1% BSA

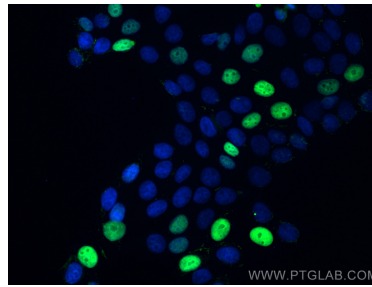
For technical support and original validation data for this product please contact:  
T: 1 (888) 4PTGLAB (1-888-478-4522) (toll free in USA), or 1(312) 455-8498 (outside USA)  
E: proteintech@ptglab.com  
W: ptglab.com

This product is exclusively available under Proteintech Group brand and is not available to purchase from any other manufacturer.

## Ausgewählte Validierungsdaten



Various lysates were subjected to SDS PAGE followed by western blot with 27296-1-AP (P21 antibody) at dilution of 1:600 incubated at room temperature for 1.5 hours.



Immunofluorescent analysis of (4% PFA) fixed MCF-7 cells using P21 antibody (27296-1-AP) at dilution of 1:400 and CoraLite®488-Conjugated AffiniPure Goat Anti-Rabbit IgG(H+L).