

Nur für Forschungszwecke

calreticulin Polyklonaler Antikörper

Katalog-Nr.: 27298-1-AP

Vorgestelltes Produkt

24 Publikationen



Allgemeine Informationen

Katalog-Nr.: 27298-1-AP	GenBank-Zugangsnummer: BC002500	Reinigungsmethode: Antigen-Affinitätsreinigung
Größe: 150ul, Konzentration: 530 µg/ml von Nanodrop;	GeneID (NCBI): 811	Empfohlene Verdünnungen: WB 1:2000-1:10000 IHC 1:50-1:500 IF 1:50-1:500
Wirt: Kaninchen	Vollständiger Name: calreticulin	
Isotyp: IgG	Berechnete Masse: 60 kDa	
Immunogen Katalognummer: AG26064	Beobachtete Masse: 55 kDa	

Anwendungen

Geprüfte Anwendungen:

FC, IF, IHC, WB, ELISA

In Publikationen genannte Anwendungen:

FC, IF, IHC, WB

Getestete Reaktivität:

Human, Maus, Ratte

Zitierte Arten:

Human, Maus, Ratte

Hinweis-IHC: Antigenmaskierung mit TE-Puffer pH 9,0 empfohlen. (*) Wahlweise kann die Antigenmaskierung auch mit Citratpuffer pH 6,0 erfolgen.

Positivkontrollen:

WB: HeLa-Zellen, C6-Zellen, Maushirngewebe, Mausextrakt, Skelettmuskelgewebe, NIH/3T3-Zellen, Rattenhirngewebe, SH-SY5Y-Zellen

IHC: humanes Schilddrüsengewebe,

IF: HepG2-Zellen, HeLa-Zellen, SKOV-3-Zellen

Hintergrundinformationen

CALR, also named as grp60, ERp60, HACBP, CRP55, CRTC and Calregulin, belongs to the calreticulin family. It is a molecular calcium-binding chaperone promoting folding, oligomeric assembly and quality control in the ER via the calreticulin/calnexin cycle. CALR is a ER marker. It interacts transiently with almost all of the monoglucosylated glycoproteins that are synthesized in the ER. CALR interacts with the DNA-binding domain of NR3C1 and mediates its nuclear export. The MW of CALR migrates aberrantly at 60 kD by SDS-PAGE. Some study provided that it's a new possibility for CRT-mediated tumor immune prevention and treatment.

Bemerkenswerte Veröffentlichungen

Verfasser	Pubmed ID	Journal	Anwendung
Wei Cai	36170234	Autophagy	IF
Yu Chen	34592660	Cell Calcium	WB, IF
Xianglong Yu	36109853	ACS Appl Mater Interfaces	WB

Lagerung

Lagerungsbedingungen:

Bei -20°C lagern. Nach dem Versand ein Jahr lang stabil

Lagerungspuffer:

PBS mit 0.02% Natriumazid und 50% Glycerin pH 7.3.

Aliquotieren ist nicht notwendig bei -20°C Lagerung

*** 20ul-Größen enthalten 0.1% BSA

For technical support and original validation data for this product please contact:

T: 1 (888) 4PTGLAB (1-888-478-4522) (toll free in USA), or 1(312) 455-8498 (outside USA)

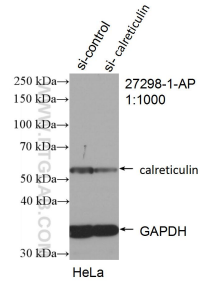
E: proteintech@ptglab.com
W: ptglab.com

This product is exclusively available under Proteintech Group brand and is not available to purchase from any other manufacturer.

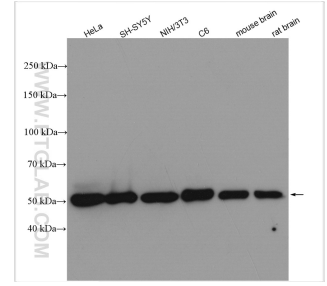
Ausgewählte Validierungsdaten



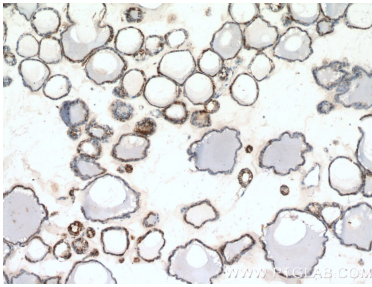
Immunofluorescent analysis of (4% PFA) fixed HepG2 cells using Calreticulin antibody (27298-1-AP) at dilution of 1:200 and CoraLite@488-Conjugated AffiniPure Goat Anti-Rabbit IgG(H+L), CL594-Phalloidin (red).



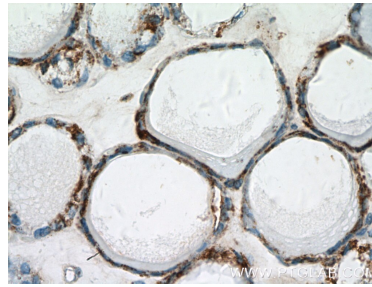
WB result of Calreticulin antibody (27298-1-AP; 1:1000); incubated at room temperature for 1.5 hours with sh-Control and sh-Calreticulin transfected HeLa cells.



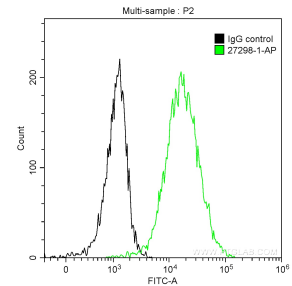
Various lysates were subjected to SDS PAGE followed by western blot with 27298-1-AP (Calreticulin antibody) at dilution of 1:5000 incubated at room temperature for 1.5 hours.



Immunohistochemical analysis of paraffin-embedded human thyroid tissue slide using 27298-1-AP (calreticulin Antibody) at dilution of 1:200 (under 10x lens).



Immunohistochemical analysis of paraffin-embedded human thyroid tissue slide using 27298-1-AP (calreticulin Antibody) at dilution of 1:200 (under 40x lens).



1×10^6 Jurkat cells were stained with 0.2 ug Anti-Human Calreticulin (27298-1-AP) and CoraLite@488-Conjugated AffiniPure Goat Anti-Rabbit IgG(H+L) at dilution 1:1000 (green), and 0.2 ug Control Antibody. Cells were fixed with 90% MeOH.