

Nur für Forschungszwecke

ICAM2 Polyklonaler Antikörper

Katalog-Nr.: 27322-1-AP



Allgemeine Informationen

Katalog-Nr.:
27322-1-AP

Größe:

150ul, Konzentration: 350 µg/ml von Nanodrop und 267 µg/ml durch die Bradford-Methode mit BSA als Standard;

Wirt:

Kaninchen

Isotyp:

IgG

Immunogen Katalognummer:
AG25952

GenBank-Zugangsnummer:

BC003097

GeneID (NCBI):

3384

Vollständiger Name:

intercellular adhesion molecule 2

Berechnete Masse:

31 kDa

Beobachtete Masse:

55-80 kDa

Reinigungsmethode:

Antigen-Affinitätsreinigung

Empfohlene Verdünnungen:

WB 1:500-1:3000

Anwendungen

Geprüfte Anwendungen:

FC, WB, ELISA

Getestete Reaktivität:

Human, Maus

Positivkontrollen:

WB: HL-60-Zellen, HUVEC-Zellen, Jurkat-Zellen, Mauslungengewebe

Hintergrundinformationen

ICAM2 is a cell adhesion protein having important roles in cell migration, especially during inflammation when leukocytes cross the endothelium. Initially described as a receptor for lymphocyte function-associated antigen-1 (LFA1), ICAM2 may play a role in lymphocyte recirculation by blocking LFA-1-dependent cell adhesion. It mediates adhesive interactions important for antigen-specific immune response, NK-cell mediated clearance, lymphocyte recirculation, and other cellular interactions important for immune response and surveillance. ICAM2 has six N-linked glycosylation sites at amino acids (asparagines) 47, 82, 105, 153, 178 and 187. This antibody got 55-80 kDa in western blotting maybe due to glycosylation.

Lagerung

Lagerungsbedingungen:

Bei -20°C lagern. Nach dem Versand ein Jahr lang stabil

Lagerungspuffer:

PBS mit 0.02% Natriumazid und 50% Glycerin pH 7.3.

Aliquotieren ist nicht notwendig bei -20°C Lagerung

***** 20ul-Größen enthalten 0.1% BSA**

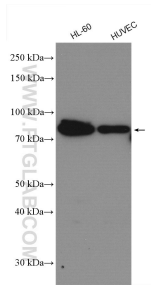
For technical support and original validation data for this product please contact:

T: 1 (888) 4PTGLAB (1-888-478-4522) (toll free in USA), or 1(312) 455-8498 (outside USA)

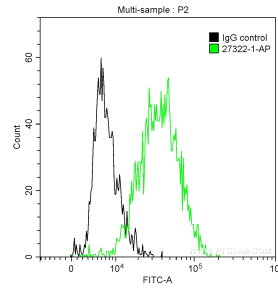
E: proteintech@ptglab.com
W: ptglab.com

This product is exclusively available under Proteintech Group brand and is not available to purchase from any other manufacturer.

Ausgewählte Validierungsdaten



Various lysates were subjected to SDS PAGE followed by western blot with 27322-1-AP (ICAM2 antibody) at dilution of 1:1500 incubated at room temperature for 1.5 hours.



1X10⁶ HUVEC cells were stained with 0.2 ug Anti-Human ICAM2 (27322-1-AP) and CoraLite®488-Conjugated AffiniPure Goat Anti-Rabbit IgG(H+L) at dilution 1:1000 (green), and 0.2 ug Control Antibody. Cells were fixed with 90% MeOH.