

Nur für Forschungszwecke

# SEMA4A Polyklonaler Antikörper

Katalog-Nr.: 27359-1-AP

Vorgestelltes Produkt



## Allgemeine Informationen

|  |  |  |
|--|--|--|
| <b>Katalog-Nr.:</b><br>27359-1-AP  | <b>GenBank-Zugangsnummer:</b><br>BC020974  | <b>Reinigungsmethode:</b><br>Antigen-Affinitätsreinigung             |
| <b>Größe:</b><br>150ul, Konzentration: 400 µg/ml von Nanodrop und 333 µg/ml durch die Bradford-Methode mit BSA als Standard; | <b>GeneID (NCBI):</b><br>64218   | <b>Empfohlene Verdünnungen:</b><br>WB 1:500-1:2000<br>IHC 1:50-1:500 |
| <b>Wirt:</b><br>Kaninchen  | <b>Vollständiger Name:</b><br>sema domain, immunoglobulin domain (Ig), transmembrane domain (TM) and short cytoplasmic domain, (semaphorin) 4A |  |
| <b>Isotyp:</b><br>IgG  | <b>Berechnete Masse:</b><br>761 aa, 84 kDa   |  |
| <b>Immunogen Katalognummer:</b><br>AG26023   | <b>Beobachtete Masse:</b><br>120-150 kDa   |  |

## Anwendungen

### Geprüfte Anwendungen:

IHC, WB, ELISA

### Getestete Reaktivität:

Human

**Hinweis-IHC: Antigenmaskierung mit TE-Puffer pH 9,0 empfohlen. (\*) Wahlweise kann die Antigenmaskierung auch mit Citratpuffer pH 6,0 erfolgen.**

### Positivkontrollen:

WB: HeLa-Zellen, PC-3-Zellen

IHC: humanes Mammakarzinomgewebe, humanes Plazenta-Gewebe

## Hintergrundinformationen

Sema4A, the membrane-bound class 4 semaphorin, belongs to semaphorins superfamily. Sema4A functions as potent axonal repellants in the nervous system, and is involved in vascular development. Two species of Sema4A with molecular weights of about 150 and 120 kDa were observed. The antibody recognizes the Sema4A protein, which is of appropriate molecular size (~120 kDa) for the glycosylated protein (PMID: 26296689/17318185/26024919).

## Lagerung

### Lagerungsbedingungen:

Bei -20°C lagern. Nach dem Versand ein Jahr lang stabil

### Lagerungspuffer:

PBS mit 0.02% Natriumazid und 50% Glycerin pH 7.3.

Aliquotieren ist nicht notwendig bei -20°C Lagerung

\*\*\* 20ul-Größen enthalten 0.1% BSA

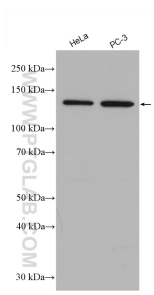
For technical support and original validation data for this product please contact:

T: 1 (888) 4PTGLAB (1-888-478-4522) (toll free in USA), or 1(312) 455-8498 (outside USA)

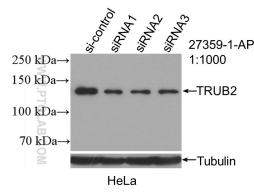
E: proteintech@ptglab.com  
W: ptglab.com

This product is exclusively available under Proteintech Group brand and is not available to purchase from any other manufacturer.

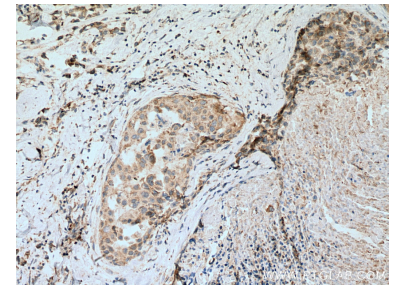
## Ausgewählte Validierungsdaten



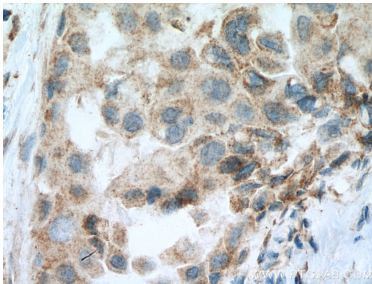
Various lysates were subjected to SDS PAGE followed by western blot with 27359-1-AP (SEMA4A antibody) at dilution of 1:1500 incubated at room temperature for 1.5 hours.



WB result of SEMA4A antibody (27359-1-AP; 1:1000; incubated at room temperature for 1.5 hours) with sh-Control and sh-SEMA4A transfected HeLa cells.



Immunohistochemical analysis of paraffin-embedded human breast cancer tissue slide using 27359-1-AP (SEMA4A antibody) at dilution of 1:200 (under 10x lens). Heat mediated antigen retrieval with Tris-EDTA buffer (pH 9.0).



Immunohistochemical analysis of paraffin-embedded human breast cancer tissue slide using 27359-1-AP (SEMA4A antibody) at dilution of 1:200 (under 40x lens). Heat mediated antigen retrieval with Tris-EDTA buffer (pH 9.0).