

Nur für Forschungszwecke

SELENBP1 Polyklonaler Antikörper

Katalog-Nr.:27449-1-AP



Allgemeine Informationen

Katalog-Nr.:
27449-1-AP

Größe:

150ul , Konzentration: 550 µg/ml von
Nanodrop und 300 µg/ml durch die
Bradford-Methode mit BSA als
Standard;

Wirt:

Kaninchen

Isotyp:

IgG

Immunogen Katalognummer:
AG24453

GenBank-Zugangsnummer:
BC009084

GeneID (NCBI):

8991

Vollständiger Name:

selenium binding protein 1

Berechnete Masse:

52 kDa

Beobachtete Masse:

56 kDa

Reinigungsmethode:

Antigen-Affinitätsreinigung

Empfohlene Verdünnungen:

WB 1:1000-1:4000

Anwendungen

Geprüfte Anwendungen:

WB, ELISA

Getestete Reaktivität:

Human, Maus

Positivkontrollen:

WB : HEK-293-Zellen, L02-Zellen, Mauslebergewebe,
MCF-7-Zellen

Hintergrundinformationen

SELENBP1 (selenium binding protein 1, SBP1), also known as LPSB or SP56, is a 472 amino acid peripheral membrane protein that binds selenium covalently. Selenium, an essential trace element, has been shown to have an anti-cancer effect. Many reports have described a relationship between insufficient selenium intake and increased risk of cancer. Moreover, the expression of SELENBP1 has been shown to be decreased in several tumors including cancers of the prostate, lungs, colon, and ovary (PMID: 21143902, 20332323, 18272210). SELENBP1 has four isoforms with the molecular mass of 56kD, 52kD and 45kD.

Lagerung

Lagerungsbedingungen:

Bei -20°C lagern. Nach dem Versand ein Jahr lang stabil

Lagerungspuffer:

PBS mit 0.02% Natriumazid und 50% Glycerin pH 7.3.

Aliquotieren ist nicht notwendig bei -20°C Lagerung

*** 20ul-Größen enthalten 0.1% BSA

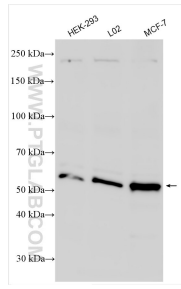
For technical support and original validation data for this product please contact:

T: 1 (888) 4PTGLAB (1-888-478-4522) (toll free
in USA), or 1(312) 455-8498 (outside USA)

E: proteintech@ptglab.com
W: ptglab.com

This product is exclusively available under Proteintech Group brand and is not available to purchase from any other manufacturer.

Ausgewählte Validierungsdaten



Various lysates were subjected to SDS PAGE followed by western blot with 27449-1-AP (SELENBP1 antibody) at dilution of 1:2000 incubated at room temperature for 1.5 hours.