

Nur für Forschungszwecke

SLC31A1 Polyklonaler Antikörper

Katalog-Nr.:27499-1-AP

Vorgestelltes Produkt

2 Publikationen



Allgemeine Informationen

Katalog-Nr.: 27499-1-AP	GenBank-Zugangsnummer: BC013611	Reinigungsmethode: Antigen-Affinitätsreinigung
Größe: 150ul , Konzentration: 550 µg/ml von Nanodrop;	GeneID (NCBI): 1317	Empfohlene Verdünnungen: WB 1:500-1:1000 IF 1:50-1:500
Wirt: Kaninchen	Vollständiger Name: solute carrier family 31 (copper transporters), member 1	
Isotyp: IgG	Berechnete Masse: 21 kDa	
Immunogen Katalognummer: AG26601	Beobachtete Masse: 21-25,30-35,60-70 kDa	

Anwendungen

Geprüfte Anwendungen: FC, IF, WB, ELISA	Positivkontrollen: WB : HT-29-Zellen, Caco-2-Zellen, HeLa-Zellen IF : humanes Leberkarzinomgewebe,
In Publikationen genannte Anwendungen: WB	
Getestete Reaktivität: Human	
Zitierte Arten: Human	

Hintergrundinformationen

Bemerkenswerte Veröffentlichungen

Verfasser	Pubmed ID	Journal	Anwendung
Hong Yang	36293101	Int J Mol Sci	WB
Trace M Jones	36860653	Cancer Res Commun	WB

Lagerung

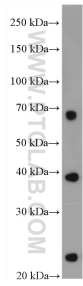
Lagerungsbedingungen:
Bei -20°C lagern. Nach dem Versand ein Jahr lang stabil
Lagerungspuffer:
PBS mit 0.02% Natriumazid und 50% Glycerin pH 7.3.
Aliquotieren ist nicht notwendig bei -20°C Lagerung

*** 20ul-Größen enthalten 0.1% BSA

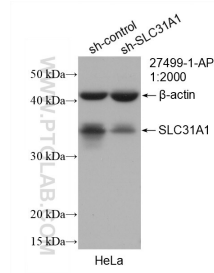
For technical support and original validation data for this product please contact:
T: 1 (888) 4PTGLAB (1-888-478-4522) (toll free in USA), or 1(312) 455-8498 (outside USA)
E: proteintech@ptglab.com
W: ptglab.com

This product is exclusively available under Proteintech Group brand and is not available to purchase from any other manufacturer.

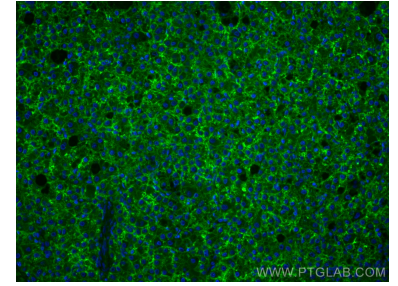
Ausgewählte Validierungsdaten



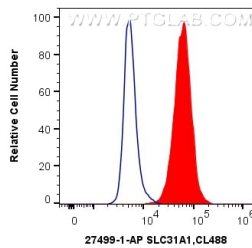
HT-29 cells were subjected to SDS PAGE followed by western blot with 27499-1-AP (SLC31A1 antibody) at dilution of 1:500 incubated at room temperature for 1.5 hours.



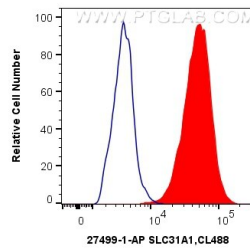
WB result of SLC31A1 antibody (27499-1-AP; 1:2000; incubated at room temperature for 1.5 hours) with sh-Control and sh-SLC31A1 transfected HeLa cells.



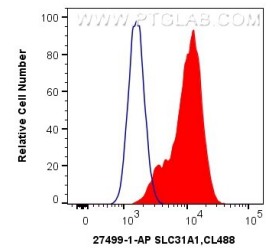
Immunofluorescent analysis of (4% PFA) fixed human liver cancer tissue using SLC31A1 antibody (27499-1-AP) at dilution of 1:200 and CoraLite®488-Conjugated AffiniPure Goat Anti-Rabbit IgG(H+L).



1X10⁶ HeLa cells were intracellularly stained with 0.4 ug Anti-Human SLC31A1 (27499-1-AP) and CoraLite®488-Conjugated AffiniPure Goat Anti-Rabbit IgG(H+L) at dilution 1:1000 (red), or 0.4 ug Control Antibody. Cells were fixed with 4% PFA and permeabilized with Flow Cytometry Perm Buffer (PF00011-C).



1X10⁶ Neuro-2a cells were intracellularly stained with 0.4 ug Anti-Human SLC31A1 (27499-1-AP) and CoraLite®488-Conjugated AffiniPure Goat Anti-Rabbit IgG(H+L) at dilution 1:1000 (red), or 0.4 ug Control Antibody. Cells were fixed with 4% PFA and permeabilized with Flow Cytometry Perm Buffer (PF00011-C).



1X10⁶ HeLa cells were surface stained with 0.4 ug Anti-Human SLC31A1 (27499-1-AP) and CoraLite®488-Conjugated AffiniPure Goat Anti-Rabbit IgG(H+L) at dilution 1:1000 (red), or 0.4 ug Control Antibody. Cells were not fixed.