

Nur für Forschungszwecke

Calsequestrin 2 Polyklonaler Antikörper

Katalog-Nr.: 27560-1-AP



Allgemeine Informationen

Katalog-Nr.:
27560-1-AP

Größe:
150ul, Konzentration: 600 µg/ml von
Nanodrop und 333 µg/ml durch die
Bradford-Methode mit BSA als
Standard;

Wirt:
Kaninchen

Isotyp:
IgG

Immunogen Katalognummer:
AG26412

GenBank-Zugangsnummer:
BC022288

GeneID (NCBI):
845

Vollständiger Name:
calsequestrin 2 (cardiac muscle)

Berechnete Masse:
46 kDa

Beobachtete Masse:
50 kDa

Reinigungsmethode:

Antigen-Affinitätsreinigung

Empfohlene Verdünnungen:

WB 1:1000-1:4000

IP 0.5-4.0 µg für IP und 1:500-1:2000

für WB

IHC 1:50-1:500

Anwendungen

Geprüfte Anwendungen:

IHC, IP, WB, ELISA

Getestete Reaktivität:

Human, Maus, Ratte

Hinweis-IHC: Antigenmaskierung mit TE-Puffer pH 9,0 empfohlen. (*) Wahlweise kann die Antigenmaskierung auch mit Citratpuffer pH 6,0 erfolgen.

Positivkontrollen:

WB: Mausherzgewebe,

IP: Mausherzgewebe,

IHC: humanes Herzgewebe, humanes Skelettmuskelgewebe

Hintergrundinformationen

Calsequestrin 2 (CASQ2) specifies the cardiac muscle family member of the calsequestrin family. Calsequestrin is localized to the sarcoplasmic reticulum in cardiac and slow skeletal muscle cells. CASQ2 is an important component of calcium handling as a calcium storage protein in the sarcoplasmic reticulum (SR), playing an important role in the regulation of the cardiac ryanodine receptor (RyR2)-mediated calcium release and SR calcium release refractoriness. Mutations in CASQ2 cause stress-induced polymorphic ventricular tachycardia, also referred to as catecholaminergic polymorphic ventricular tachycardia 2 (CPVT2), a disease characterized by bidirectional ventricular tachycardia that may lead to cardiac arrest.

Lagerung

Lagerungsbedingungen:

Bei -20°C lagern. Nach dem Versand ein Jahr lang stabil

Lagerungspuffer:

PBS mit 0.02% Natriumazid und 50% Glycerin pH 7.3.

Aliquotieren ist nicht notwendig bei -20°C Lagerung

*** 20ul-Größen enthalten 0.1% BSA

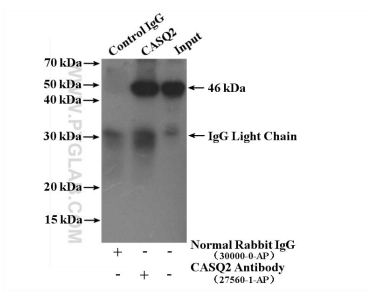
For technical support and original validation data for this product please contact:

T: 1 (888) 4PTGLAB (1-888-478-4522) (toll free
in USA), or 1(312) 455-8498 (outside USA)

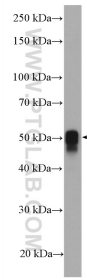
E: proteintech@ptglab.com
W: ptglab.com

This product is exclusively available under Proteintech Group brand and is not available to purchase from any other manufacturer.

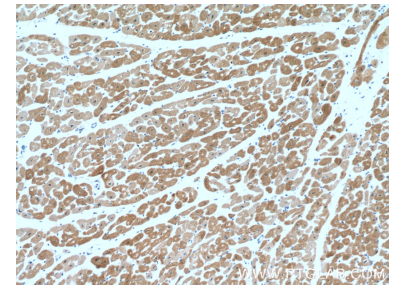
Ausgewählte Validierungsdaten



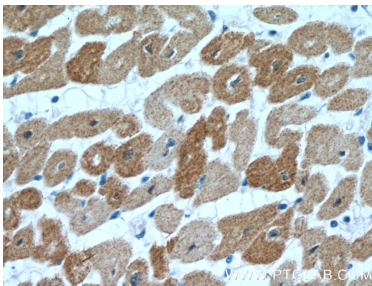
IP result of anti-Calsequestrin 2 (IP:27560-1-AP, 4 μ g; Detection:27560-1-AP 1:1.000) with mouse heart tissue lysate 3720 μ g.



mouse heart tissue were subjected to SDS PAGE followed by western blot with 27560-1-AP (Calsequestrin 2 antibody) at dilution of 1:2000 incubated at room temperature for 1.5 hours.



Immunohistochemical analysis of paraffin-embedded human heart tissue slide using 27560-1-AP (Calsequestrin 2 antibody) at dilution of 1:200 (under 10 \times lens).



Immunohistochemical analysis of paraffin-embedded human heart tissue slide using 27560-1-AP (Calsequestrin 2 antibody) at dilution of 1:200 (under 40 \times lens).