

Nur für Forschungszwecke

# SLC6A19 Polyklonaler Antikörper

Katalog-Nr.: 27575-1-AP



## Allgemeine Informationen

<b>Katalog-Nr.:</b> 27575-1-AP	<b>GenBank-Zugangsnummer:</b> BC148801	<b>Reinigungsmethode:</b> Antigen-Affinitätsreinigung
<b>Größe:</b> 150ul, Konzentration: 650 µg/ml von Nanodrop;	<b>GeneID (NCBI):</b> 340024	<b>Empfohlene Verdünnungen:</b> WB 1:500-1:1000
<b>Wirt:</b> Kaninchen	<b>Vollständiger Name:</b> solute carrier family 6 (neutral amino acid transporter), member 19	
<b>Isotyp:</b> IgG	<b>Berechnete Masse:</b> 634 aa, 71 kDa	
<b>Immunogen Katalognummer:</b> AG24362	<b>Beobachtete Masse:</b> 71 kDa	

## Anwendungen

<b>Geprüfte Anwendungen:</b> WB, ELISA	<b>Positivkontrollen:</b> WB: Caco-2-Zellen, Maus-Dünndarmgewebe, Mausnierengewebe, PC-3-Zellen
<b>Getestete Reaktivität:</b> Human, Maus	

## Hintergrundinformationen

SLC6A19, also named as B0AT1, encodes system B(0) transmembrane protein that mediates epithelial resorption of neutral amino acids across the apical membrane in kidney and intestine (PubMed: 15044460). The protein contains 634 amino acids and has 12 predicted transmembrane regions with highly expression in human kidney and small intestine and minimal in pancreas (PubMed: 15286787). The expression of SLC6A19 in intestinal cells depends on angiotensin converting enzyme 2 which is the cellular receptor for SARS-CoV-2 (PubMed: 32132184). Mutations in SLC6A19 cause Hartnup disease (PMID: 15286787, PMID: 15286788).

## Lagerung

**Lagerungsbedingungen:**  
Bei -20°C lagern. Nach dem Versand ein Jahr lang stabil  
**Lagerungspuffer:**  
PBS mit 0.02% Natriumazid und 50% Glycerin pH 7.3.  
Aliquotieren ist nicht notwendig bei -20°C Lagerung

\*\*\* 20ul-Größen enthalten 0.1% BSA

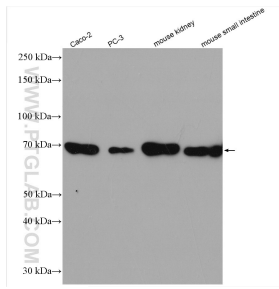
For technical support and original validation data for this product please contact:

T: 1 (888) 4PTGLAB (1-888-478-4522) (toll free in USA), or 1(312) 455-8498 (outside USA)

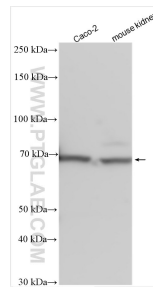
E: [proteintech@ptglab.com](mailto:proteintech@ptglab.com)  
W: [ptglab.com](http://ptglab.com)

This product is exclusively available under Proteintech Group brand and is not available to purchase from any other manufacturer.

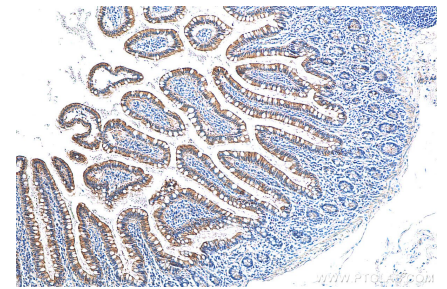
## Ausgewählte Validierungsdaten



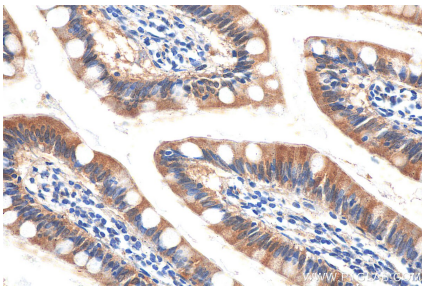
Various lysates were subjected to SDS PAGE followed by western blot with 27575-1-AP (SLC6A19 antibody) at dilution of 1:500 incubated at room temperature for 1.5 hours.



Various lysates were subjected to SDS PAGE followed by western blot with 27575-1-AP (SLC6A19 antibody) at dilution of 1:1000 incubated at room temperature for 1.5 hours.



Immunohistochemical analysis of paraffin-embedded human small intestine tissue slide using 27575-1-AP (SLC6A19 antibody) at dilution of 1:800 (under 10x lens).



Immunohistochemical analysis of paraffin-embedded human small intestine tissue slide using 27575-1-AP (SLC6A19 antibody) at dilution of 1:800 (under 40x lens).