

Nur für Forschungszwecke

# CRTC1 Polyklonaler Antikörper

Katalog-Nr.: 27647-1-AP

1 Publikationen



## Allgemeine Informationen

Katalog-Nr.:  
27647-1-AP

Größe:  
150ul, Konzentration: 900 µg/ml von  
Nanodrop und 400 µg/ml durch die  
Bradford-Methode mit BSA als  
Standard;

Wirt:  
Kaninchen

Isotyp:  
IgG

Immunogen Katalognummer:  
AG26494

GenBank-Zugangsnummer:  
BC017075

GeneID (NCBI):  
23373

Vollständiger Name:  
CREB regulated transcription  
coactivator 1

Berechnete Masse:  
67 kDa

Beobachtete Masse:  
68-75 kDa

Reinigungsmethode:

Antigen-Affinitätsreinigung

Empfohlene Verdünnungen:

WB 1:500-1:2000

## Anwendungen

Geprüfte Anwendungen:

WB, ELISA

In Publikationen genannte Anwendungen:

WB

Getestete Reaktivität:

Human, Maus

Zitierte Arten:

Human

Positivkontrollen:

WB: Neuro-2a-Zellen, HEK-293T-Zellen, HeLa-Zellen

## Hintergrundinformationen

CRTC1, also named as Transducer of CREB protein 1, is a 634 amino acid protein, which belongs to the TORC family. CRTC1 is highly expressed in adult and fetal brain and is low expressed in other tissues such as heart, spleen, lung, skeletal muscle, salivary gland, ovary and kidney. CRTC1 localizes in Cytoplasm when is phosphorylated by SIK or AMPK and when sequestered by 14-3-3 proteins (PubMed:16817901). it translocates to the nucleus on Ser-151 dephosphorylation, instigated by a number of factors including calcium ion and cAMP levels. CRTC1 as a Transcriptional coactivator for CREB1 which activates transcription through both consensus and variant cAMP response element (CRE) sites. The calculated molecular weight of CRTC1 is 68 kDa, but the modified protein is about 70-75 kDa.

## Bemerkenswerte Veröffentlichungen

Verfasser	Pubmed ID	Journal	Anwendung
Lei Qiang	32866426	Autophagy	WB

## Lagerung

Lagerungsbedingungen:

Bei -20°C lagern. Nach dem Versand ein Jahr lang stabil

Lagerungspuffer:

PBS mit 0.02% Natriumazid und 50% Glycerin pH 7.3.

Aliquotieren ist nicht notwendig bei -20°C Lagerung

\*\*\* 20ul-Größen enthalten 0.1% BSA

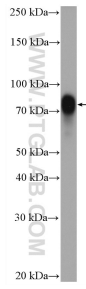
For technical support and original validation data for this product please contact:

T: 1 (888) 4PTGLAB (1-888-478-4522) (toll free  
in USA), or 1(312) 455-8498 (outside USA)

E: proteintech@ptglab.com  
W: ptglab.com

This product is exclusively available under Proteintech Group brand and is not available to purchase from any other manufacturer.

## Ausgewählte Validierungsdaten



Neuro-2a cells were subjected to SDS PAGE followed by western blot with 27647-1-AP (CRTC1 antibody) at dilution of 1:1000 incubated at room temperature for 1.5 hours.