

Nur für Forschungszwecke

RSL1D1 Polyklonaler Antikörper

Katalog-Nr.:27667-1-AP



Allgemeine Informationen

Katalog-Nr.: 27667-1-AP	GenBank-Zugangsnummer: BC112228	Reinigungsmethode: Antigen-Affinitätsreinigung
Größe: 150ul , Konzentration: 450 µg/ml von Nanodrop;	GeneID (NCBI): 26156	Empfohlene Verdünnungen: WB 1:500-1:3000
Wirt: Kaninchen	Vollständiger Name: ribosomal L1 domain containing 1	
Isotyp: IgG	Berechnete Masse: 490 aa, 55 kDa	
Immunogen Katalognummer: AG24923	Beobachtete Masse: 55-70 kDa	

Anwendungen

Geprüfte Anwendungen: WB, ELISA	Positivkontrollen: WB : U-251-Zellen, HEK-293-Zellen, HepG2-Zellen, K-562-Zellen, PC-3-Zellen
Getestete Reaktivität: Human	

Hintergrundinformationen

RL1D1, Ribosomal L1 domain-containing protein 1, also named CSIG, a member of the universal ribosomal protein uL1 family. RL1D1 regulates cellular senescence through inhibition of PTEN translation. It acts as a pro-apoptotic regulator in response to DNA damage (PMID: 18678645, PMID: 22419112). RSL1D1 promoted the progression of colorectal cancer through RAN-mediated autophagy suppression. RSL1D1 can be detected 70 kDa (PMID:35013134).

Lagerung

Lagerungsbedingungen:
Bei -20°C lagern. Nach dem Versand ein Jahr lang stabil
Lagerungspuffer:
PBS mit 0.02% Natriumazid und 50% Glycerin pH 7.3.
Aliquotieren ist nicht notwendig bei -20°C Lagerung

*** 20ul-Größen enthalten 0.1% BSA

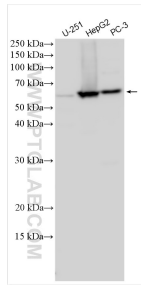
For technical support and original validation data for this product please contact:

T: 1 (888) 4PTGLAB (1-888-478-4522) (toll free
in USA), or 1(312) 455-8498 (outside USA)

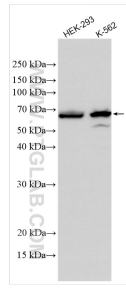
E: proteintech@ptglab.com
W: ptglab.com

This product is exclusively available under Proteintech Group brand and is not available to purchase from any other manufacturer.

Ausgewählte Validierungsdaten



Various lysates were subjected to SDS PAGE followed by western blot with 27667-1-AP (RSL1D1 antibody) at dilution of 1:1500 incubated at room temperature for 1.5 hours.



Various lysates were subjected to SDS PAGE followed by western blot with 27667-1-AP (RSL1D1 antibody) at dilution of 1:1500 incubated at room temperature for 1.5 hours.